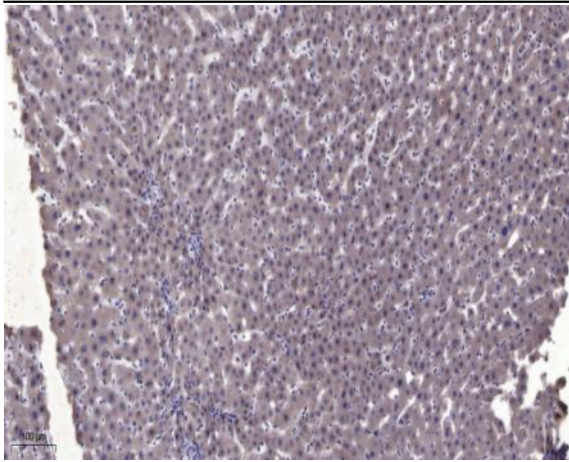


PC-PLD2 Polyclonal Antibody

Catalog No :	YT3620
Reactivity :	Human;Mouse;Rat
Applications :	WB;ELISA;IHC
Target :	PC-PLD2
Fields :	>>Glycerophospholipid metabolism;>>Ether lipid metabolism;>>Metabolic pathways;>>Ras signaling pathway;>>cAMP signaling pathway;>>Sphingolipid signaling pathway;>>Phospholipase D signaling pathway;>>Endocytosis;>>Fc gamma R-mediated phagocytosis;>>Glutamatergic synapse;>>GnRH signaling pathway;>>Parathyroid hormone synthesis, secretion and action;>>Pathways in cancer;>>Chemical carcinogenesis - reactive oxygen species;>>Pancreatic cancer;>>Choline metabolism in cancer
Gene Name :	PLD2
Protein Name :	Phospholipase D2
Human Gene Id :	5338
Human Swiss Prot No :	O14939
Mouse Gene Id :	18806
Mouse Swiss Prot No :	P97813
Rat Gene Id :	25097
Rat Swiss Prot No :	P70498
Immunogen :	Synthesized peptide derived from PC-PLD2 . at AA range: 110-190
Specificity :	PC-PLD2 Polyclonal Antibody detects endogenous levels of PC-PLD2 protein.
Formulation :	Liquid in PBS containing 50% glycerol, 0.5% BSA and 0.02% sodium azide.

Source :	Polyclonal, Rabbit,IgG
Dilution :	WB 1:500-2000;IHC 1:50-300; ELISA 2000-20000
Purification :	The antibody was affinity-purified from rabbit antiserum by affinity-chromatography using epitope-specific immunogen.
Concentration :	1 mg/ml
Storage Stability :	-15°C to -25°C/1 year(Do not lower than -25°C)
Observed Band :	106kD
Cell Pathway :	Glycerophospholipid metabolism;Ether lipid metabolism;Endocytosis;Fc gamma R-mediated phagocytosis;GnRH;
Background :	The protein encoded by this gene catalyzes the hydrolysis of phosphatidylcholine to phosphatidic acid and choline. The activity of the encoded enzyme is enhanced by phosphatidylinositol 4,5-bisphosphate and ADP-ribosylation factor-1. This protein localizes to the peripheral membrane and may be involved in cytoskeletal organization, cell cycle control, transcriptional regulation, and/or regulated secretion. Two transcript variants encoding different isoforms have been found for this gene.[provided by RefSeq, Jul 2011],
Function :	catalytic activity:A phosphatidylcholine + H(2)O = choline + a phosphatidate.,enzyme regulation:Stimulated by phosphatidylinositol 4,5-bisphosphate and activated by the ADP-ribosylation factor-1 (ARF-1).,function:May have a role in signal-induced cytoskeletal regulation and/or endocytosis.,online information:Phospholipase D entry,similarity:Belongs to the phospholipase D family.,similarity:Contains 1 PH domain.,similarity:Contains 1 PX (phox homology) domain.,similarity:Contains 2 PLD phosphodiesterase domains.,subunit:Interacts with EGFR (By similarity). Interacts with PIP5K1A.,tissue specificity:Ubiquitous.,
Subcellular Location :	Cell membrane ; Lipid-anchor .
Expression :	Ubiquitous.

Products Images



Immunohistochemical analysis of paraffin-embedded human liver cancer. 1, Antibody was diluted at 1:200(4° overnight). 2, Tris-EDTA,pH9.0 was used for antigen retrieval. 3,Secondary antibody was diluted at 1:200(room temperature, 45min).