

## PDGF-A Polyclonal Antibody

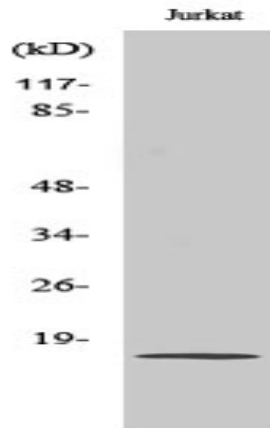
<b>Catalog No :</b>	YT3630
<b>Reactivity :</b>	Human;Mouse;Rat
<b>Applications :</b>	WB;IHC;IF;ELISA
<b>Target :</b>	PDGF-A
<b>Fields :</b>	>>EGFR tyrosine kinase inhibitor resistance;>>MAPK signaling pathway;>>Ras signaling pathway;>>Rap1 signaling pathway;>>Calcium signaling pathway;>>Phospholipase D signaling pathway;>>PI3K-Akt signaling pathway;>>Focal adhesion;>>Gap junction;>>JAK-STAT signaling pathway;>>Regulation of actin cytoskeleton;>>Pathways in cancer;>>Transcriptional misregulation in cancer;>>MicroRNAs in cancer;>>Glioma;>>Prostate cancer;>>Melanoma;>>Choline metabolism in cancer;>>Fluid shear stress and atherosclerosis
<b>Gene Name :</b>	PDGFA
<b>Protein Name :</b>	Platelet-derived growth factor subunit A
<b>Human Gene Id :</b>	5154
<b>Human Swiss Prot No :</b>	P04085
<b>Mouse Gene Id :</b>	18590
<b>Mouse Swiss Prot No :</b>	P20033
<b>Rat Gene Id :</b>	25266
<b>Rat Swiss Prot No :</b>	P28576
<b>Immunogen :</b>	The antiserum was produced against synthesized peptide derived from human PDGF-A. AA range:105-154
<b>Specificity :</b>	PDGF-A Polyclonal Antibody detects endogenous levels of PDGF-A protein.  Liquid in PBS containing 50% glycerol, 0.5% BSA and 0.02% sodium azide.

---

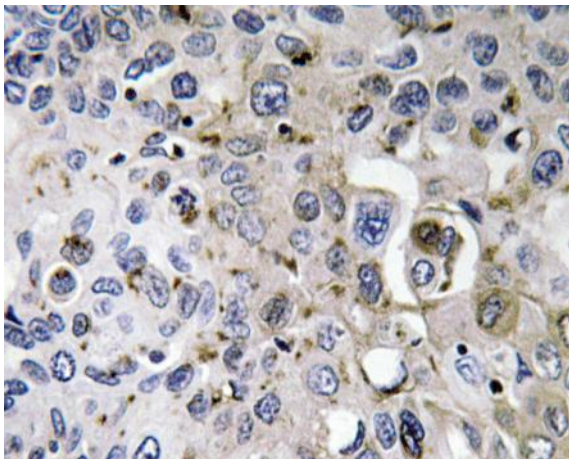
<b>Formulation :</b>	Polyclonal, Rabbit,IgG
<b>Dilution :</b>	WB 1:500 - 1:2000. IHC 1:100 - 1:300. ELISA: 1:40000.. IF 1:50-200
<b>Purification :</b>	The antibody was affinity-purified from rabbit antiserum by affinity-chromatography using epitope-specific immunogen.
<b>Concentration :</b>	1 mg/ml
<b>Storage Stability :</b>	-15°C to -25°C/1 year(Do not lower than -25°C)
<b>Observed Band :</b>	17kD
<b>Cell Pathway :</b>	MAPK_ERK_Growth;MAPK_G_Protein;Cytokine-cytokine receptor interaction;Focal adhesion;Gap junction;Regulates Actin and Cytoskeleton;Pathways in cancer;Glioma;Prostate cancer;Melanoma;
<b>Background :</b>	platelet derived growth factor subunit A(PDGFA) Homo sapiens This gene encodes a member of the protein family comprised of both platelet-derived growth factors (PDGF) and vascular endothelial growth factors (VEGF). The encoded preproprotein is proteolytically processed to generate platelet-derived growth factor subunit A, which can homodimerize, or alternatively, heterodimerize with the related platelet-derived growth factor subunit B. These proteins bind and activate PDGF receptor tyrosine kinases, which play a role in a wide range of developmental processes. Alternative splicing results in multiple transcript variants. [provided by RefSeq, Oct 2015],
<b>Function :</b>	domain:The long form contains a basic insert which acts as a cell retention signal.,function:Platelet-derived growth factor is a potent mitogen for cells of mesenchymal origin. Binding of this growth factor to its affinity receptor elicits a variety of cellular responses. It is released by platelets upon wounding and plays an important role in stimulating adjacent cells to grow and thereby heals the wound.,miscellaneous:A-A and B-B, as well as A-B, dimers can bind to the PDGF receptor.,similarity:Belongs to the PDGF/VEGF growth factor family.,subunit:Antiparallel disulfide-linked dimer of non-identical (A and B) chains. Homodimers of A and B chains are implicated in transformation processes. Interacts with CSPG4.,
<b>Subcellular Location :</b>	Secreted. Released by platelets upon wounding.
<b>Expression :</b>	PCR rescued clones,

---

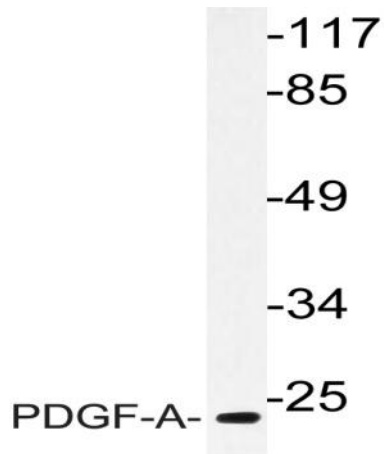
## Products Images



Western Blot analysis of various cells using PDGF-A Polyclonal Antibody



Immunohistochemistry analysis of PDGF-A antibody in paraffin-embedded human lung carcinoma tissue.



Western blot analysis of lysate from Jurkat cells, using PDGF-A antibody.