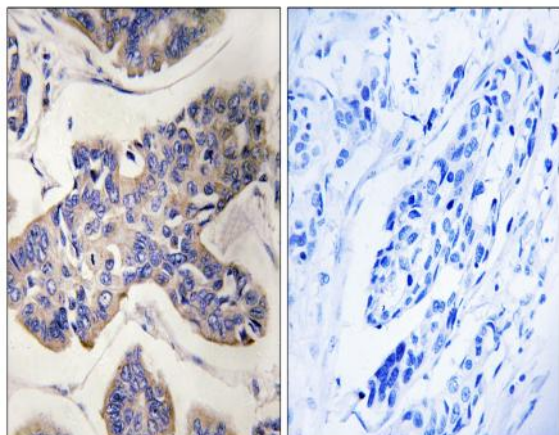


PSK2 Polyclonal Antibody

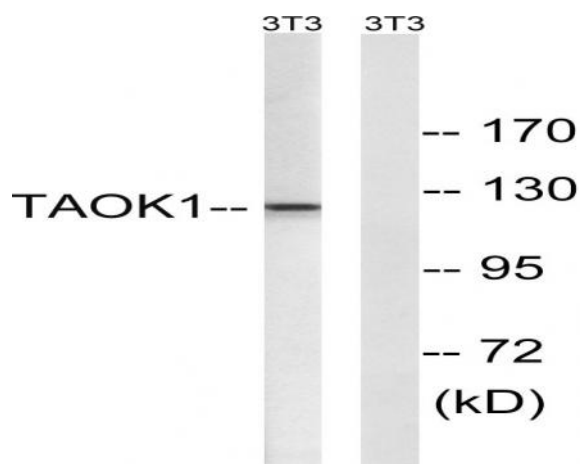
| | |
|------------------------------|---|
| Catalog No : | YT3882 |
| Reactivity : | Human;Mouse;Rat |
| Applications : | WB;IHC;IF;ELISA |
| Target : | PSK2 |
| Fields : | >>MAPK signaling pathway |
| Gene Name : | TAOK1 |
| Protein Name : | Serine/threonine-protein kinase TAO1 |
| Human Gene Id : | 57551 |
| Human Swiss Prot No : | Q7L7X3 |
| Mouse Gene Id : | 216965 |
| Mouse Swiss Prot No : | Q5F2E8 |
| Rat Gene Id : | 286993 |
| Rat Swiss Prot No : | O88664 |
| Immunogen : | The antiserum was produced against synthesized peptide derived from human TAOK1. AA range:431-480 |
| Specificity : | PSK2 Polyclonal Antibody detects endogenous levels of PSK2 protein. |
| Formulation : | Liquid in PBS containing 50% glycerol, 0.5% BSA and 0.02% sodium azide. |
| Source : | Polyclonal, Rabbit,IgG |
| Dilution : | WB 1:500 - 1:2000. IHC 1:100 - 1:300. ELISA: 1:5000.. IF 1:50-200 |

| | |
|-------------------------------|--|
| Purification : | The antibody was affinity-purified from rabbit antiserum by affinity-chromatography using epitope-specific immunogen. |
| Concentration : | 1 mg/ml |
| Storage Stability : | -15°C to -25°C/1 year(Do not lower than -25°C) |
| Observed Band : | 120kD |
| Cell Pathway : | MAPK_ERK_Growth;MAPK_G_Protein; |
| Background : | <p>catalytic activity:ATP + a protein = ADP + a phosphoprotein.,function:Phosphorylates MKK3 (By similarity). Activates the p38 MAP kinase pathway through the specific activation of the upstream MKK3 kinase.,PTM:Autophosphorylated.,similarity:Belongs to the protein kinase superfamily. STE Ser/Thr protein kinase family. STE20 subfamily.,similarity:Contains 1 protein kinase domain.,subunit:Self-associates. Interacts with MKK3.,tissue specificity:Highly expressed in the testis, and to a lower extent also expressed in brain, placenta, colon and skeletal muscle.,</p> |
| Function : | <p>catalytic activity:ATP + a protein = ADP + a phosphoprotein.,function:Phosphorylates MKK3 (By similarity). Activates the p38 MAP kinase pathway through the specific activation of the upstream MKK3 kinase.,PTM:Autophosphorylated.,similarity:Belongs to the protein kinase superfamily. STE Ser/Thr protein kinase family. STE20 subfamily.,similarity:Contains 1 protein kinase domain.,subunit:Self-associates. Interacts with MKK3.,tissue specificity:Highly expressed in the testis, and to a lower extent also expressed in brain, placenta, colon and skeletal muscle.,</p> |
| Subcellular Location : | Cytoplasm . |
| Expression : | Highly expressed in the testis, and to a lower extent also expressed in brain, placenta, colon and skeletal muscle. |

Products Images



Immunohistochemistry analysis of paraffin-embedded human breast carcinoma tissue, using TAOK1 Antibody. The picture on the right is blocked with the synthesized peptide.



Western blot analysis of lysates from NIH/3T3 cells, using TAOK1 Antibody. The lane on the right is blocked with the synthesized peptide.