

## PDRG1 Polyclonal Antibody

<b>Catalog No :</b>	YT3648
<b>Reactivity :</b>	Human;Mouse;Rat
<b>Applications :</b>	WB;IHC;IF;ELISA
<b>Target :</b>	PDRG1
<b>Gene Name :</b>	PDRG1
<b>Protein Name :</b>	p53 and DNA damage-regulated protein 1
<b>Human Gene Id :</b>	81572
<b>Human Swiss Prot No :</b>	Q9NUG6
<b>Mouse Gene Id :</b>	68559
<b>Mouse Swiss Prot No :</b>	P59048
<b>Rat Gene Id :</b>	296278
<b>Rat Swiss Prot No :</b>	Q642A0
<b>Immunogen :</b>	The antiserum was produced against synthesized peptide derived from human PDRG1. AA range:58-107
<b>Specificity :</b>	PDRG1 Polyclonal Antibody detects endogenous levels of PDRG1 protein.
<b>Formulation :</b>	Liquid in PBS containing 50% glycerol, 0.5% BSA and 0.02% sodium azide.
<b>Source :</b>	Polyclonal, Rabbit,IgG
<b>Dilution :</b>	WB 1:500 - 1:2000. IHC 1:100 - 1:300. ELISA: 1:40000.. IF 1:50-200
<b>Purification :</b>	The antibody was affinity-purified from rabbit antiserum by affinity-chromatography using epitope-specific immunogen.

---

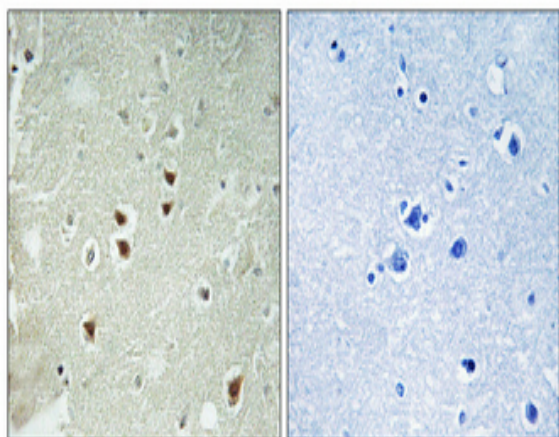
<b>Concentration :</b>	1 mg/ml
<b>Storage Stability :</b>	-15°C to -25°C/1 year(Do not lower than -25°C)
<b>Observed Band :</b>	19kD
<b>Background :</b>	function:May play a role in chaperone-mediated protein folding .,induction:By UV and repressed by TP53/p53.,similarity:Belongs to the prefoldin subunit beta family.,tissue specificity:Predominantly expressed in normal testis and exhibits reduced but detectable expression in other organs.,
<b>Function :</b>	function:May play a role in chaperone-mediated protein folding .,induction:By UV and repressed by TP53/p53.,similarity:Belongs to the prefoldin subunit beta family.,tissue specificity:Predominantly expressed in normal testis and exhibits reduced but detectable expression in other organs.,
<b>Subcellular Location :</b>	Cytoplasm .
<b>Expression :</b>	Predominantly expressed in normal testis and exhibits reduced but detectable expression in other organs.

---

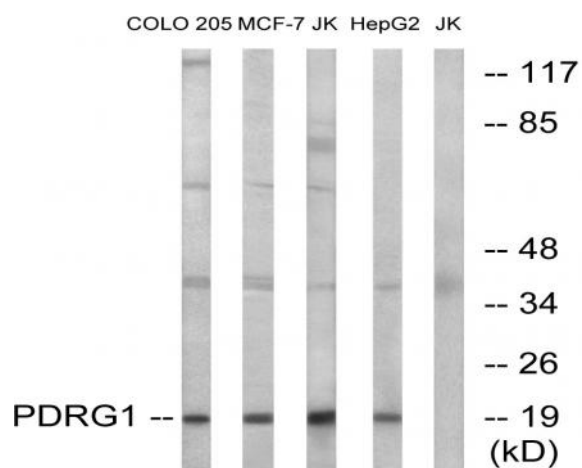
## Products Images



Western Blot analysis of various cells using PDRG1 Polyclonal Antibody



Immunohistochemical analysis of paraffin-embedded Human brain. Antibody was diluted at 1:100(4° overnight). High-pressure and temperature Tris-EDTA,pH8.0 was used for antigen retrieval. Negative control (right) obtained from antibody was pre-absorbed by immunogen peptide.



Western blot analysis of lysates from Jurkat, COLO, MCF-7, and HepG2 cells, using PDRG1 Antibody. The lane on the right is blocked with the synthesized peptide.