

## Rab 31 Polyclonal Antibody

<b>Catalog No :</b>	YT3928
<b>Reactivity :</b>	Human;Mouse;Rat
<b>Applications :</b>	WB;ELISA;IHC
<b>Target :</b>	Rab 31
<b>Fields :</b>	>>Endocytosis
<b>Gene Name :</b>	RAB31
<b>Protein Name :</b>	Ras-related protein Rab-31
<b>Human Gene Id :</b>	11031
<b>Human Swiss Prot No :</b>	Q13636
<b>Mouse Gene Id :</b>	106572
<b>Mouse Swiss Prot No :</b>	Q921E2
<b>Rat Gene Id :</b>	246324
<b>Rat Swiss Prot No :</b>	Q6GQP4
<b>Immunogen :</b>	Synthesized peptide derived from Rab 31 . at AA range: 50-130
<b>Specificity :</b>	Rab 31 Polyclonal Antibody detects endogenous levels of Rab 31 protein.
<b>Formulation :</b>	Liquid in PBS containing 50% glycerol, 0.5% BSA and 0.02% sodium azide.
<b>Source :</b>	Polyclonal, Rabbit,IgG
<b>Dilution :</b>	WB 1:500-2000;IHC 1:50-300; ELISA 2000-20000
<b>Purification :</b>	The antibody was affinity-purified from rabbit antiserum by affinity-

chromatography using epitope-specific immunogen.

**Concentration :** 1 mg/ml

**Storage Stability :** -15°C to -25°C/1 year(Do not lower than -25°C)

**Observed Band :** 21kD

**Cell Pathway :** Endocytosis;

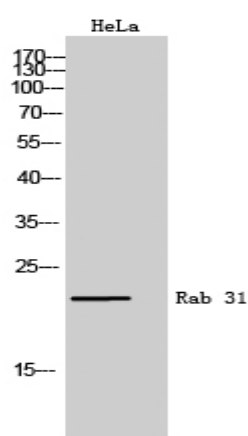
**Background :** Small GTP-binding proteins of the RAB family, such as RAB31, play essential roles in vesicle and granule targeting (Bao et al., 2002 [PubMed 11784320]).[supplied by OMIM, Jul 2009],

**Function :** similarity:Belongs to the small GTPase superfamily. Rab family.,tissue specificity:Highest expression in placenta and brain with lower levels in heart and lung. Not detected in liver, skeletal muscle, kidney or pancreas.,

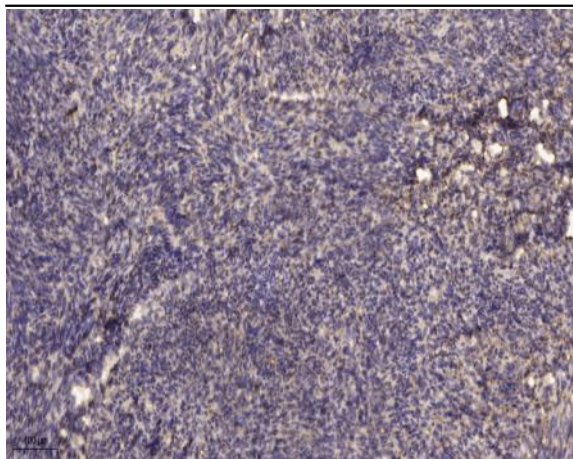
**Subcellular Location :** Golgi apparatus, trans-Golgi network . Golgi apparatus, trans-Golgi network membrane ; Lipid-anchor ; Cytoplasmic side . Early endosome . Cytoplasmic vesicle, phagosome . Cytoplasmic vesicle, phagosome membrane ; Lipid-anchor ; Cytoplasmic side . Rapidly recruited to phagosomes containing S.aureus or M.tuberculosis (PubMed:21255211) . .

**Expression :** Highest expression in placenta and brain with lower levels in heart and lung. Not detected in liver, skeletal muscle, kidney or pancreas.

## Products Images



Western Blot analysis of HeLa cells using Rab 31 Polyclonal Antibody



Immunohistochemical analysis of paraffin-embedded human uterus. 1, Antibody was diluted at 1:200(4° overnight). 2, Tris-EDTA,pH9.0 was used for antigen retrieval. 3,Secondary antibody was diluted at 1:200(room temperature, 45min).