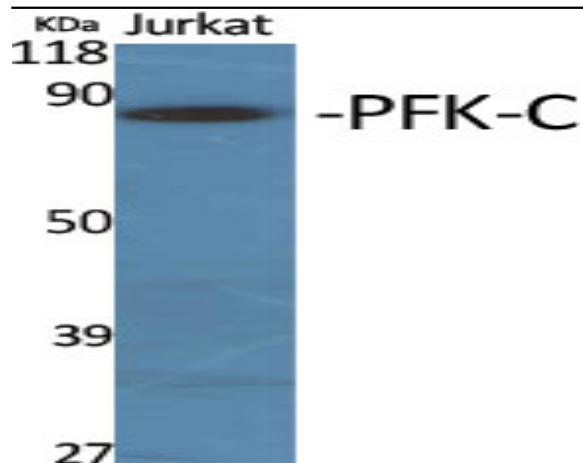


PFK-C Polyclonal Antibody

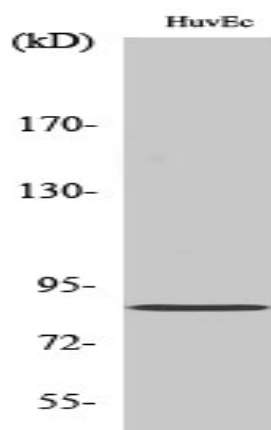
Catalog No :	YT3686
Reactivity :	Human;Mouse;Rat;Monkey
Applications :	WB;IHC;IF;ELISA
Target :	PFK-C
Fields :	>>Glycolysis / Gluconeogenesis;>>Pentose phosphate pathway;>>Fructose and mannose metabolism;>>Galactose metabolism;>>Metabolic pathways;>>Carbon metabolism;>>Biosynthesis of amino acids;>>RNA degradation;>>HIF-1 signaling pathway;>>AMPK signaling pathway;>>Thyroid hormone signaling pathway;>>Glucagon signaling pathway;>>Central carbon metabolism in cancer
Gene Name :	PFKP
Protein Name :	6-phosphofructokinase type C
Human Gene Id :	5214
Human Swiss Prot No :	Q01813
Mouse Gene Id :	56421
Mouse Swiss Prot No :	Q9WUA3
Rat Gene Id :	60416
Rat Swiss Prot No :	P47860
Immunogen :	The antiserum was produced against synthesized peptide derived from human K6PP. AA range:341-390
Specificity :	PFK-C Polyclonal Antibody detects endogenous levels of PFK-C protein.
Formulation :	Liquid in PBS containing 50% glycerol, 0.5% BSA and 0.02% sodium azide.
Source :	Polyclonal, Rabbit,IgG

Dilution :	WB 1:500 - 1:2000. IHC 1:100 - 1:300. IF 1:200 - 1:1000. ELISA: 1:5000. Not yet tested in other applications.
Purification :	The antibody was affinity-purified from rabbit antiserum by affinity-chromatography using epitope-specific immunogen.
Concentration :	1 mg/ml
Storage Stability :	-15°C to -25°C/1 year(Do not lower than -25°C)
Observed Band :	84kD
Cell Pathway :	Glycolysis / Gluconeogenesis;Pentose phosphate pathway;Fructose and mannose metabolism;Galactose metabolism;
Background :	This gene encodes a member of the phosphofructokinase A protein family. The encoded enzyme is the platelet-specific isoform of phosphofructokinase and plays a key role in glycolysis regulation. This gene may play a role in metabolic reprogramming in some cancers, including clear cell renal cell carcinomas, and cancer of the bladder, breast, and lung. Alternative splicing results in multiple transcript variants. [provided by RefSeq, Sep 2016],
Function :	catalytic activity:ATP + D-fructose 6-phosphate = ADP + D-fructose 1,6-bisphosphate.,cofactor:Magnesium.,enzyme regulation:Allosteric enzyme activated by ADP, AMP, or fructose bisphosphate and inhibited by ATP or citrate.,miscellaneous:In human PFK exists as a system of 3 types of subunits, PFKM (muscle), PFKL (liver) and PFKP (platelet) isoenzymes.,pathway:Carbohydrate degradation; glycolysis; D-glyceraldehyde 3-phosphate and glycerone phosphate from D-glucose: step 3/4.,similarity:Belongs to the phosphofructokinase family. Two domains subfamily.,subunit:Tetramer. Muscle is M4, liver is L4, and red cell is M3L, M2L2, or ML3. A subunit composition with a higher proportion of platelet type subunits is found in platelets, brain and fibroblasts.,
Subcellular Location :	Cytoplasm .
Expression :	Brain,Epithelium,Kidney,Pancreatic islet,Placenta,Prostate,

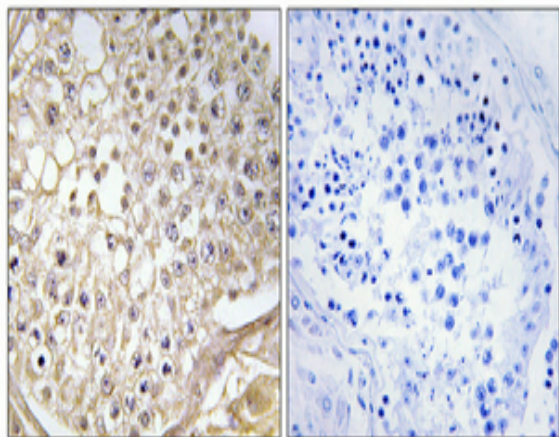
Products Images



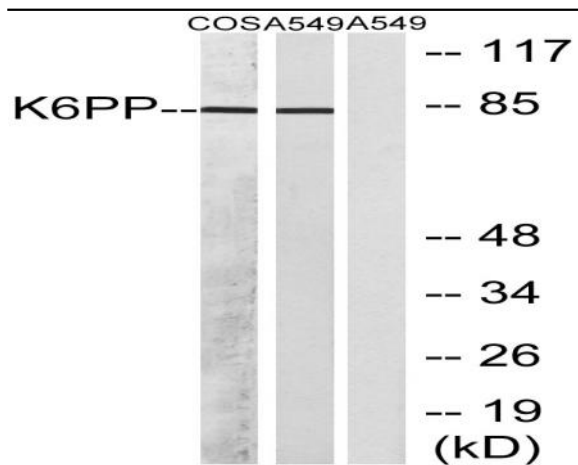
Western Blot analysis of various cells using PFK-C Polyclonal Antibody



Western Blot analysis of HuvEc cells using PFK-C Polyclonal Antibody



Immunohistochemical analysis of paraffin-embedded Human testis. Antibody was diluted at 1:100 (4° overnight). High-pressure and temperature Tris-EDTA, pH 8.0 was used for antigen retrieval. Negative control (right) obtained from antibody was pre-absorbed by immunogen peptide.



Western blot analysis of lysates from A549 and COS7 cells, using K6PP Antibody. The lane on the right is blocked with the synthesized peptide.