

Rag A/B Polyclonal Antibody

Catalog No :	YT3990
Reactivity :	Human;Mouse;Rat
Applications :	WB;IHC;IF;ELISA
Target :	Rag A/B
Fields :	>>Autophagy - animal;>>mTOR signaling pathway;>>Shigellosis
Gene Name :	RRAGA/RRAGB
Protein Name :	Ras-related GTP-binding protein A/B
Human Gene Id :	10670/10325
Human Swiss Prot No :	Q7L523/Q5VZM2
Mouse Gene Id :	68441/245670
Rat Gene Id :	117044/100909655
Rat Swiss Prot No :	Q63486/Q63487
Immunogen :	The antiserum was produced against synthesized peptide derived from human RRAGA/B. AA range:264-313
Specificity :	Rag A/B Polyclonal Antibody detects endogenous levels of Rag A/B protein.
Formulation :	Liquid in PBS containing 50% glycerol, 0.5% BSA and 0.02% sodium azide.
Source :	Polyclonal, Rabbit,IgG
Dilution :	WB 1:500 - 1:2000. IHC 1:100 - 1:300. ELISA: 1:20000.. IF 1:50-200
Purification :	The antibody was affinity-purified from rabbit antiserum by affinity-chromatography using epitope-specific immunogen.

Concentration : 1 mg/ml

Storage Stability : -15°C to -25°C/1 year(Do not lower than -25°C)

Observed Band : 34kD

Cell Pathway : mTOR

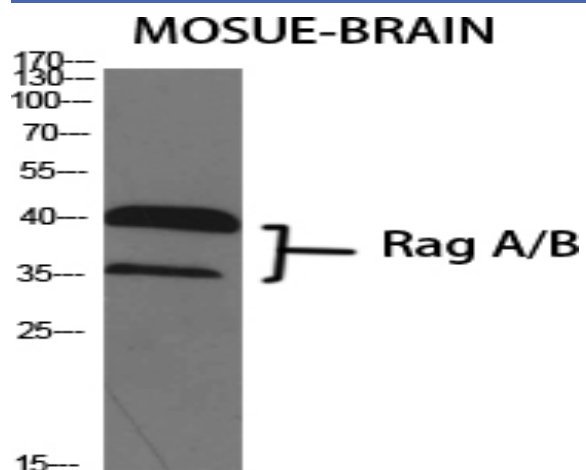
Background : function:Involved in the RCC1/Ran-GTPase pathway. May play a direct role in a TNF-alpha signaling pathway leading to induction of cell death. May alternatively act as a cellular target for adenovirus E3-14.7K, an inhibitor of TNF-alpha functions, thereby affecting cell death. Has guanine nucleotide-binding activity but undetectable intrinsic GTPase activity.,similarity:Belongs to the GTR/RAG GTP-binding protein family.,subcellular location:Predominantly cytoplasmic. May shuttle between the cytoplasm and nucleus, depending on the bound nucleotide state. Colocalizes in vivo with adenovirus E3-14.7K mainly to the cytoplasm especially near the nuclear membrane and in discrete foci on or near the plasma membrane.,subunit:Can occur as a homodimer, or form a heterodimer with RRAGC or RRAGD in a sequence-independent manner. Binds GTP. The GTP-bound form of RRAGA interacts with NOL8. Interacts with adenovirus E3 14.7 kDa protein.,tissue specificity:Ubiquitously expressed with highest levels of expression in skeletal muscle, heart, and brain.

Function : function:Involved in the RCC1/Ran-GTPase pathway. May play a direct role in a TNF-alpha signaling pathway leading to induction of cell death. May alternatively act as a cellular target for adenovirus E3-14.7K, an inhibitor of TNF-alpha functions, thereby affecting cell death. Has guanine nucleotide-binding activity but undetectable intrinsic GTPase activity.,similarity:Belongs to the GTR/RAG GTP-binding protein family.,subcellular location:Predominantly cytoplasmic. May shuttle between the cytoplasm and nucleus, depending on the bound nucleotide state. Colocalizes in vivo with adenovirus E3-14.7K mainly to the cytoplasm especially near the nuclear membrane and in discrete foci on or near the plasma membrane.,subunit:Can occur as a homodimer, or form a heterodimer with RRAGC or RRAGD in a sequence-independent manner. Binds GTP. The GTP-bound form of RRAGA interacts with NOL8. Interacts wi

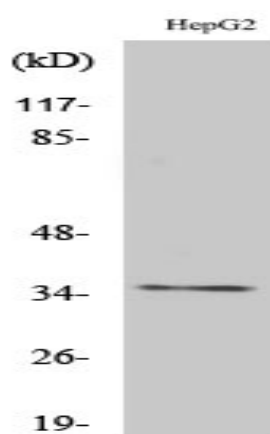
Subcellular Location : Cytoplasm . Nucleus . Lysosome . Predominantly cytoplasmic. May shuttle between the cytoplasm and nucleus, depending on the bound nucleotide state (PubMed:8995684, PubMed:9394008). Colocalizes in vivo with adenovirus E3-14.7K mainly to the cytoplasm especially near the nuclear membrane and in discrete foci on or near the plasma membrane (PubMed:8995684). .

Expression : Ubiquitously expressed with highest levels of expression in skeletal muscle, heart, and brain.

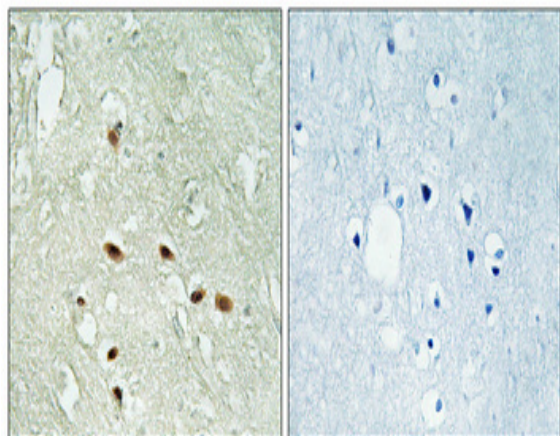
Products Images



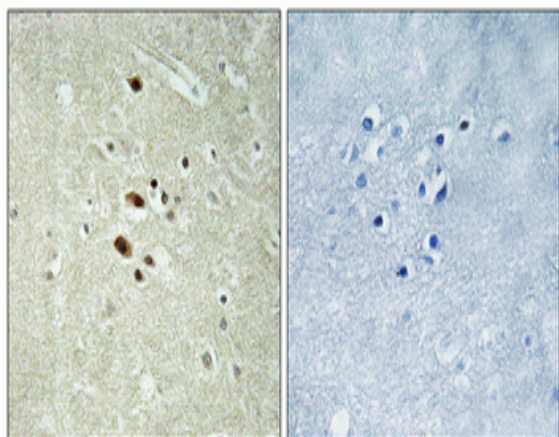
Western Blot analysis of various cells using Rag A/B Polyclonal Antibody diluted at 1:1000



Western Blot analysis of HepG2 cells using Rag A/B Polyclonal Antibody diluted at 1:1000



Immunohistochemical analysis of paraffin-embedded Human brain. Antibody was diluted at 1:100(4° overnight). High-pressure and temperature Tris-EDTA,pH8.0 was used for antigen retrieval. Negative contrl (right) obtained from antibody was pre-absorbed by immunogen peptide.



Immunohistochemical analysis of paraffin-embedded Human brain. Antibody was diluted at 1:100(4° overnight). High-pressure and temperature Tris-EDTA,pH8.0 was used for antigen retrieval. Negative control (right) obtained from antibody was pre-absorbed by immunogen peptide.

