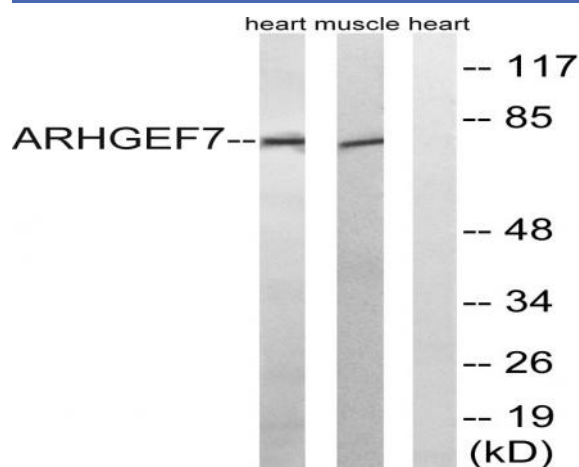


PIX β Polyclonal Antibody

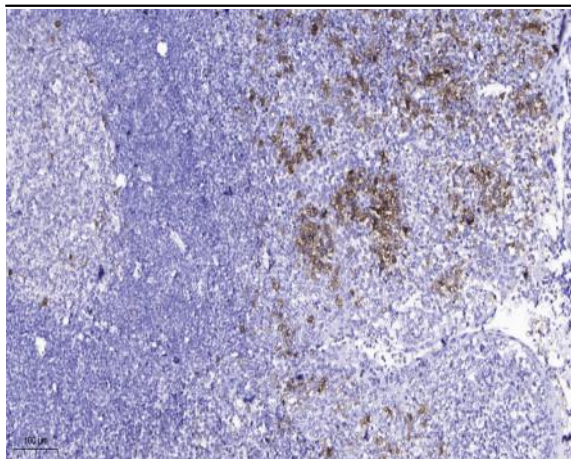
Catalog No :	YT3741
Reactivity :	Human;Mouse;Rat
Applications :	WB;IHC;IF;ELISA
Target :	PIX β
Fields :	>>Regulation of actin cytoskeleton;>>Yersinia infection
Gene Name :	ARHGEF7
Protein Name :	Rho guanine nucleotide exchange factor 7
Human Gene Id :	8874
Human Swiss Prot No :	Q14155
Mouse Gene Id :	54126
Mouse Swiss Prot No :	Q9ES28
Rat Gene Id :	114559
Rat Swiss Prot No :	O55043
Immunogen :	The antiserum was produced against synthesized peptide derived from human ARHGEF7. AA range:311-360
Specificity :	PIX β Polyclonal Antibody detects endogenous levels of PIX β protein.
Formulation :	Liquid in PBS containing 50% glycerol, 0.5% BSA and 0.02% sodium azide.
Source :	Polyclonal, Rabbit,IgG
Dilution :	WB 1:500 - 1:2000. IHC 1:100 - 1:300. ELISA: 1:5000.. IF 1:50-200

Purification :	The antibody was affinity-purified from rabbit antiserum by affinity-chromatography using epitope-specific immunogen.
Concentration :	1 mg/ml
Storage Stability :	-15°C to -25°C/1 year(Do not lower than -25°C)
Observed Band :	80kD
Cell Pathway :	Regulation of Actin Dynamics; AMPK
Background :	This gene encodes a protein that belongs to a family of cytoplasmic proteins that activate the Ras-like family of Rho proteins by exchanging bound GDP for GTP. It forms a complex with the small GTP binding protein Rac1 and recruits Rac1 to membrane ruffles and to focal adhesions. Multiple alternatively spliced transcript variants encoding different isoforms have been observed for this gene. [provided by RefSeq, Mar 2016],
Function :	function:Acts as a RAC1 guanine nucleotide exchange factor (GEF) and can induce membrane ruffling.,similarity:Contains 1 CH (calponin-homology) domain.,similarity:Contains 1 DH (DBL-homology) domain.,similarity:Contains 1 PH domain.,similarity:Contains 1 SH3 domain.,subunit:Interacts with PAK kinases through the SH3 domain. Interacts with GIT1 and TGFB1I1. Interacts with ITCH (By similarity). Interacts with unphosphorylated PAK1.,
Subcellular Location :	Cell junction, focal adhesion . Cell projection, ruffle . Cytoplasm, cell cortex . Cell projection, lamellipodium . Detected at cell adhesions. A small proportion is detected at focal adhesions.
Expression :	Amygdala,Bone marrow,Brain,Epithelium,Neuroblastoma,Testis,

Products Images



Western blot analysis of lysates from rat muscle and rat heart cells, using ARHGEF7 Antibody. The lane on the right is blocked with the synthesized peptide.



Immunohistochemical analysis of paraffin-embedded human tonsil. 1, Antibody was diluted at 1:200(4° overnight). 2, Tris-EDTA,pH9.0 was used for antigen retrieval. 3,Secondary antibody was diluted at 1:200(room temperature, 45min).