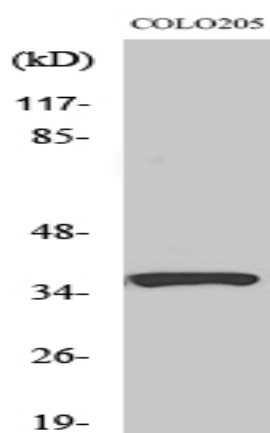


## RASSF4 Polyclonal Antibody

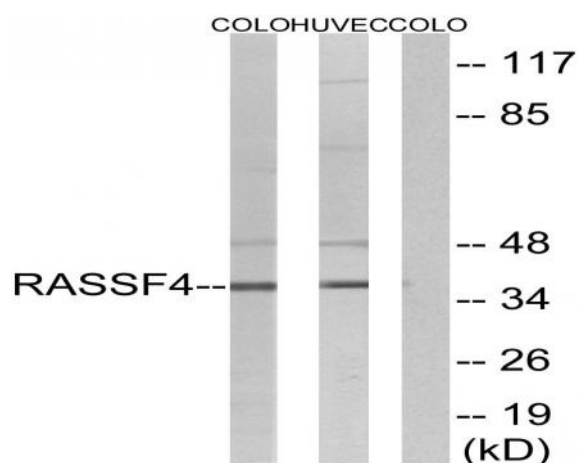
<b>Catalog No :</b>	YT4012
<b>Reactivity :</b>	Human;Rat
<b>Applications :</b>	WB;ELISA
<b>Target :</b>	RASSF4
<b>Fields :</b>	>>Hippo signaling pathway - multiple species
<b>Gene Name :</b>	RASSF4
<b>Protein Name :</b>	Ras association domain-containing protein 4
<b>Human Gene Id :</b>	83937
<b>Human Swiss Prot No :</b>	Q9H2L5
<b>Mouse Swiss Prot No :</b>	Q8CB96
<b>Rat Gene Id :</b>	362423
<b>Rat Swiss Prot No :</b>	Q566C5
<b>Immunogen :</b>	The antiserum was produced against synthesized peptide derived from human RASSF4. AA range:134-183
<b>Specificity :</b>	RASSF4 Polyclonal Antibody detects endogenous levels of RASSF4 protein.
<b>Formulation :</b>	Liquid in PBS containing 50% glycerol, 0.5% BSA and 0.02% sodium azide.
<b>Source :</b>	Polyclonal, Rabbit,IgG
<b>Dilution :</b>	WB 1:500 - 1:2000. ELISA: 1:10000. Not yet tested in other applications.
<b>Purification :</b>	The antibody was affinity-purified from rabbit antiserum by affinity-chromatography using epitope-specific immunogen.

<b>Concentration :</b>	1 mg/ml
<b>Storage Stability :</b>	-15°C to -25°C/1 year(Do not lower than -25°C)
<b>Observed Band :</b>	37kD
<b>Background :</b>	The function of this gene has not yet been determined but may involve a role in tumor suppression. Alternative splicing of this gene results in several transcript variants; however, most of the variants have not been fully described. [provided by RefSeq, Jul 2008],
<b>Function :</b>	function:Potential tumor suppressor. May act as a KRAS effector protein. May promote apoptosis and cell cycle arrest.,similarity:Contains 1 Ras-associating domain.,similarity:Contains 1 SARAH domain.,subunit:Interacts directly with activated KRAS in a GTP-dependent manner.,tissue specificity:Widely expressed. Frequently down-regulated in tumor cell lines.,
<b>Expression :</b>	Widely expressed. Frequently down-regulated in tumor cell lines.

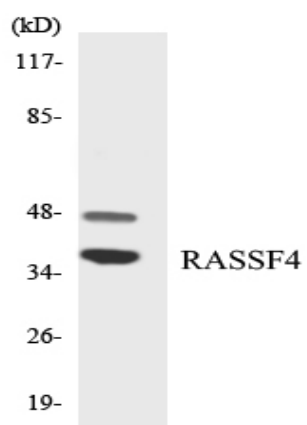
## Products Images



Western Blot analysis of various cells using RASSF4 Polyclonal Antibody



Western blot analysis of lysates from COLO and HUVEC cells, using RASSF4 Antibody. The lane on the right is blocked with the synthesized peptide.



Western blot analysis of the lysates from RAW264.7 cells using RASSF4 antibody.