

**RGPD2/3/4/6/8 Polyclonal Antibody**

<b>Catalog No :</b>	YT4068
<b>Reactivity :</b>	Human;Rat;Mouse;
<b>Applications :</b>	WB;ELISA;IHC
<b>Target :</b>	RGPD2/3/4/6/8
<b>Gene Name :</b>	RGPD8
<b>Protein Name :</b>	RANBP2-like and GRIP domain-containing protein 8
<b>Human Gene Id :</b>	729540/84220/729857
<b>Human Swiss Prot No :</b>	O14715/Q53T03/Q7Z3J3/A6NKT7/P0C839
<b>Immunogen :</b>	The antiserum was produced against synthesized peptide derived from human RGPD2/3/4/6/8. AA range:577-626
<b>Specificity :</b>	RGPD2/3/4/6/8 Polyclonal Antibody detects endogenous levels of RGPD2/3/4/6/8 protein.
<b>Formulation :</b>	Liquid in PBS containing 50% glycerol, 0.5% BSA and 0.02% sodium azide.
<b>Source :</b>	Polyclonal, Rabbit,IgG
<b>Dilution :</b>	WB 1:500-2000;IHC 1:50-300; ELISA 2000-20000
<b>Purification :</b>	The antibody was affinity-purified from rabbit antiserum by affinity-chromatography using epitope-specific immunogen.
<b>Concentration :</b>	1 mg/ml
<b>Storage Stability :</b>	-15°C to -25°C/1 year(Do not lower than -25°C)
<b>Observed Band :</b>	110kD
<b>Background :</b>	caution:The sequence shown here is derived from an Ensembl automatic

analysis pipeline and should be considered as preliminary data.,miscellaneous:One of the 8 copies of RANBP2 clustered close to the centromere of chromosome 2.,miscellaneous:One of the 8 copies of RANBP2 clustered close to the chromosome 2 centromere.,similarity:Contains 1 GRIP domain.,similarity:Contains 2 RanBD1 domains.,similarity:Contains 2 TPR repeats.,similarity:Contains 3 TPR repeats.,tissue specificity:Expressed in testis.,

**Function :**

caution:The sequence shown here is derived from an Ensembl automatic analysis pipeline and should be considered as preliminary data.,miscellaneous:One of the 8 copies of RANBP2 clustered close to the centromere of chromosome 2.,miscellaneous:One of the 8 copies of RANBP2 clustered close to the chromosome 2 centromere.,similarity:Contains 1 GRIP domain.,similarity:Contains 2 RanBD1 domains.,similarity:Contains 2 TPR repeats.,similarity:Contains 3 TPR repeats.,tissue specificity:Expressed in testis.,

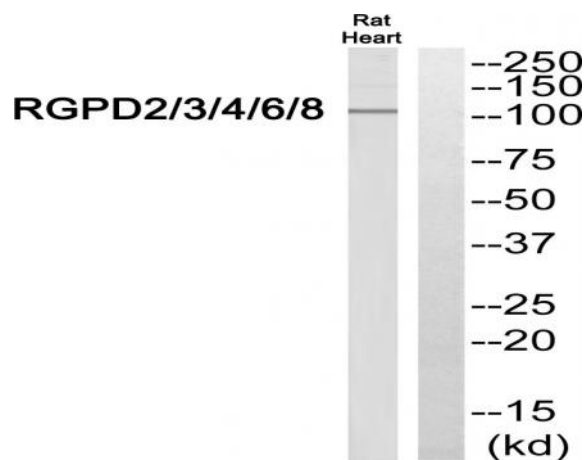
**Subcellular Location :**

intracellular,nuclear pore,

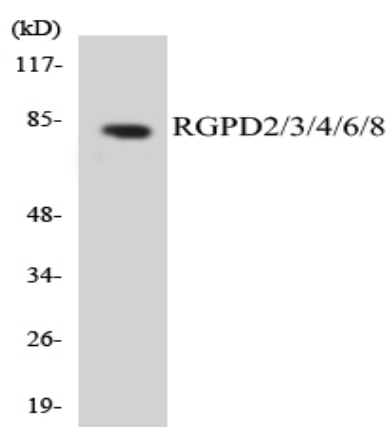
**Expression :**

Brain,Epithelium,Retina,Testis,

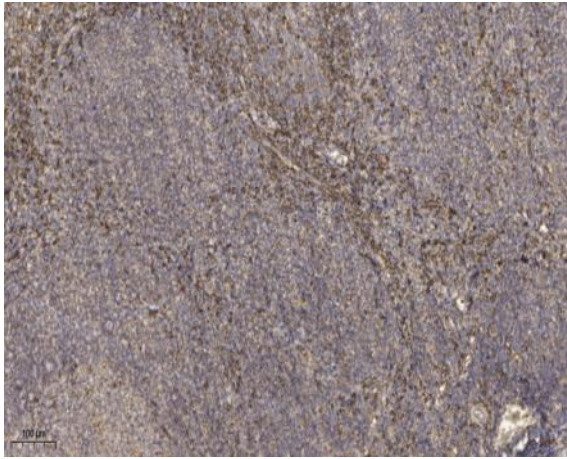
## Products Images



Western blot analysis of RGD2/3/4/6/8 Antibody. The lane on the right is blocked with the RGD2/3/4/6/8 peptide.



Western blot analysis of the lysates from Jurkat cells using RGD2/3/4/6/8 antibody.



Immunohistochemical analysis of paraffin-embedded human tonsil. 1, Antibody was diluted at 1:200(4 ° overnight). 2, Tris-EDTA,pH9.0 was used for antigen retrieval. 3,Secondary antibody was diluted at 1:200(room temperature, 45min).