

PRC Polyclonal Antibody

Catalog No :	YT3851
Reactivity :	Human;Mouse
Applications :	IHC;IF;ELISA
Target :	PRC
Gene Name :	PPRC1
Protein Name :	Peroxisome proliferator-activated receptor gamma coactivator-related protein 1
Human Gene Id :	23082
Human Swiss Prot No :	Q5VV67
Mouse Gene Id :	226169
Mouse Swiss Prot No :	Q6NZN1
Immunogen :	The antiserum was produced against synthesized peptide derived from human PPRC1. AA range:1609-1658
Specificity :	PRC Polyclonal Antibody detects endogenous levels of PRC protein.
Formulation :	Liquid in PBS containing 50% glycerol, 0.5% BSA and 0.02% sodium azide.
Source :	Polyclonal, Rabbit,IgG
Dilution :	IHC 1:100 - 1:300. ELISA: 1:40000.. IF 1:50-200
Purification :	The antibody was affinity-purified from rabbit antiserum by affinity-chromatography using epitope-specific immunogen.
Concentration :	1 mg/ml
Storage Stability :	-15°C to -25°C/1 year(Do not lower than -25°C)

Molecularweight : 178kD

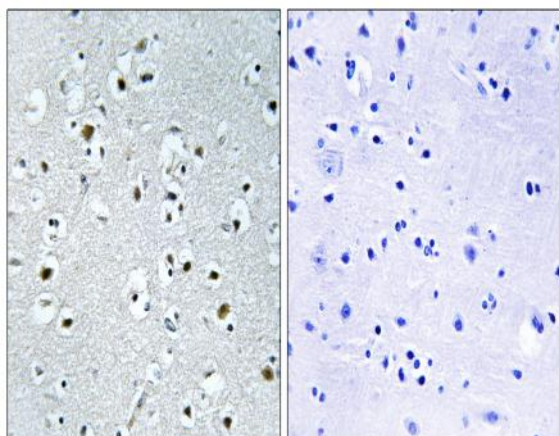
Background : The protein encoded by this gene is similar to PPAR-gamma coactivator 1 (PPARGC1/PGC-1), a protein that can activate mitochondrial biogenesis in part through a direct interaction with nuclear respiratory factor 1 (NRF1). This protein has been shown to interact with NRF1. It is thought to be a functional relative of PPAR-gamma coactivator 1 that activates mitochondrial biogenesis through NRF1 in response to proliferative signals. Alternative splicing results in multiple transcript variants. [provided by RefSeq, Dec 2013],

Function : function:Acts as a coactivator during transcriptional activation of nuclear genes related to mitochondrial biogenesis and cell growth. Involved in the transcription coactivation of CREB and NRF1 target genes.,induction:Up-regulated by serum (at protein level).,similarity:Contains 1 RRM (RNA recognition motif) domain.,subcellular location:Colocalizes with NRF1.,subunit:Interacts with CREB1 and NRF1.,tissue specificity:Strongly expressed in heart and skeletal muscle, moderately in lung, placenta, intestine, liver, kidney, spleen, thymus, colon and brain. Also expressed in several oncocyctic thyroid tumors.,

Subcellular Location : Nucleus . Colocalizes with NRF1 . .

Expression : Strongly expressed in heart and skeletal muscle, moderately in lung, placenta, intestine, liver, kidney, spleen, thymus, colon and brain. Also expressed in several oncocyctic thyroid tumors.

Products Images



Immunohistochemistry analysis of paraffin-embedded human brain tissue, using PPRC1 Antibody. The picture on the right is blocked with the synthesized peptide.