

PRDM3 Polyclonal Antibody

Catalog No :	YT3853
Reactivity :	Human;Rat;Mouse;
Applications :	WB;IHC;IF;ELISA
Target :	PRDM3
Gene Name :	MECOM
Protein Name :	MDS1 and EVI1 complex locus protein MDS1
Human Gene Id :	4197
Human Swiss Prot No :	Q13465
Mouse Swiss Prot No :	Q9Z1L8
Immunogen :	The antiserum was produced against synthesized peptide derived from human MECOM. AA range:1-50
Specificity :	PRDM3 Polyclonal Antibody detects endogenous levels of PRDM3 protein.
Formulation :	Liquid in PBS containing 50% glycerol, 0.5% BSA and 0.02% sodium azide.
Source :	Polyclonal, Rabbit,IgG
Dilution :	WB 1:500 - 1:2000. IHC 1:100 - 1:300. ELISA: 1:20000.. IF 1:50-200
Purification :	The antibody was affinity-purified from rabbit antiserum by affinity-chromatography using epitope-specific immunogen.
Concentration :	1 mg/ml
Storage Stability :	-15°C to -25°C/1 year(Do not lower than -25°C)
Observed Band :	18kD

Cell Pathway : MAPK_ERK_Growth;MAPK_G_Protein;Pathways in cancer;Chronic myeloid leukemia;

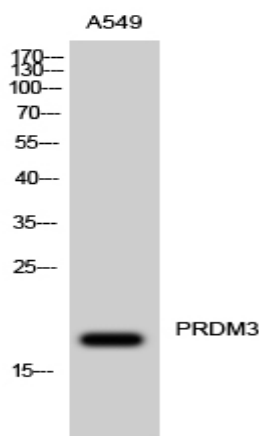
Background : The protein encoded by this gene is a transcriptional regulator and oncoprotein that may be involved in hematopoiesis, apoptosis, development, and cell differentiation and proliferation. The encoded protein can interact with CTBP1, SMAD3, CREBBP, KAT2B, MAPK8, and MAPK9. This gene can undergo translocation with the AML1 gene, resulting in overexpression of this gene and the onset of leukemia. Several transcript variants encoding a few different isoforms have been found for this gene. [provided by RefSeq, Mar 2011],

Function : disease:A chromosomal aberration involving EVI1 is a cause of chronic myelogenous leukemia (CML). Translocation t(3;21)(q26;q22) with RUNX1/AML1.,disease:A chromosomal aberration involving MDS1 is found in a form of acute myeloid leukemia (AML). Translocation t(3;21) with AML1.,miscellaneous:Can be produced either as a separate transcript and as a normal fusion transcript with EVI1.,PTM:Phosphorylated upon DNA damage, probably by ATM or ATR.,similarity:Contains 10 C2H2-type zinc fingers.,subunit:May interact with CTBP1.,

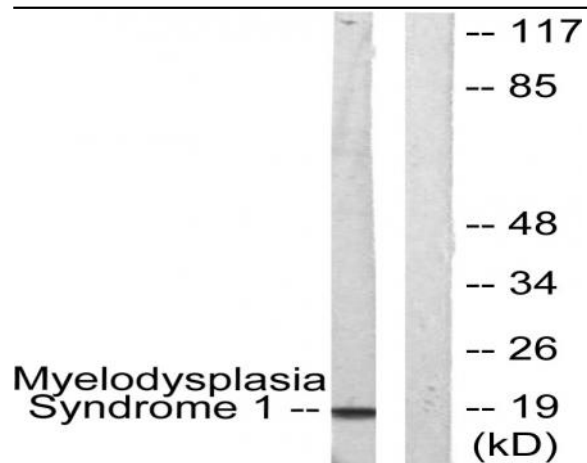
Subcellular Location : histone deacetylase complex,nucleus,nucleoplasm,cytoplasm,Golgi apparatus,cytosol,aggresome,nuclear speck,intracellular membrane-bounded organelle,

Expression : Kidney,Pancreas,

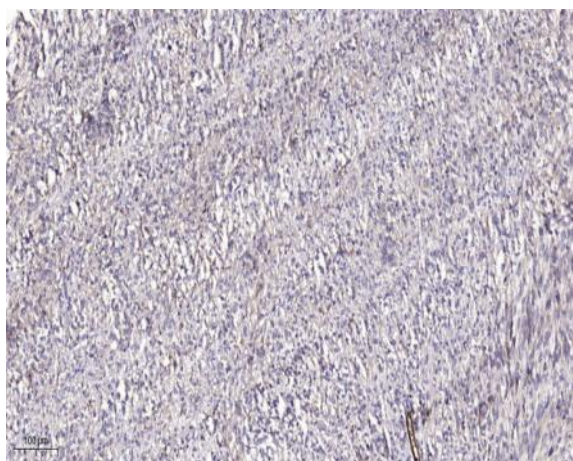
Products Images



Western Blot analysis of A549 cells using PRDM3 Polyclonal Antibody cells nucleus extracted by Minute TM Cytoplasmic and Nuclear Fractionation kit (SC-003, Inventbiotech, MN, USA).



Western blot analysis of lysates from A549 cells, using Myelodysplasia Syndrome 1 Antibody. The lane on the right is blocked with the synthesized peptide.



Immunohistochemical analysis of paraffin-embedded human Colon cancer. 1, Antibody was diluted at 1:200(4° overnight). 2, Tris-EDTA,pH9.0 was used for antigen retrieval. 3,Secondary antibody was diluted at 1:200(room temperature, 45min).