

CRADD Polyclonal Antibody

Catalog No :	YN0296
Reactivity :	Human;Rat;Mouse;
Applications :	WB;ELISA
Target :	CRADD
Gene Name :	CRADD RAIDD
Protein Name :	Death domain-containing protein CRADD (Caspase and RIP adapter with death domain) (RIP-associated protein with a death domain)
Human Gene Id :	8738
Human Swiss Prot No :	P78560
Mouse Swiss Prot No :	O88843
Immunogen :	Synthesized peptide derived from human protein . at AA range: 30-110
Specificity :	CRADD Polyclonal Antibody detects endogenous levels of protein.
Formulation :	Liquid in PBS containing 50% glycerol, and 0.02% sodium azide.
Source :	Polyclonal, Rabbit,IgG
Dilution :	WB 1:500-2000 ELISA 1:5000-20000
Purification :	The antibody was affinity-purified from rabbit antiserum by affinity-chromatography using epitope-specific immunogen.
Concentration :	1 mg/ml
Storage Stability :	-15°C to -25°C/1 year(Do not lower than -25°C)
Observed Band :	21kD

Background :

This gene encodes a protein containing a death domain (DD) motif. This protein recruits caspase 2/ICH1 to the cell death signal transduction complex, which includes tumor necrosis factor receptor 1 (TNFR1A) and RIPK1/RIP kinase, and acts in promoting apoptosis. A mutation in this gene was associated with mental retardation. A related pseudogene is found on chromosome 3. Alternative splicing results in multiple transcript variants. [provided by RefSeq, Feb 2016],

Function :

domain:Contains a death domain involved in the binding of RIP protein.,domain:The CARD domain mediates the interaction with caspase-2.,function:Apoptotic adaptor molecule specific for caspase-2 and FASL/TNF receptor-interacting protein RIP. In the presence of RIP and TRADD, CRADD recruits caspase-2 to the TNFR-1 signalling complex.,similarity:Contains 1 CARD domain.,similarity:Contains 1 death domain.,subunit:Interacts with LRDD.,tissue specificity:Constitutively expressed in most tissues, with particularly high expression in adult heart, testis, liver, skeletal muscle, fetal liver and kidney.,

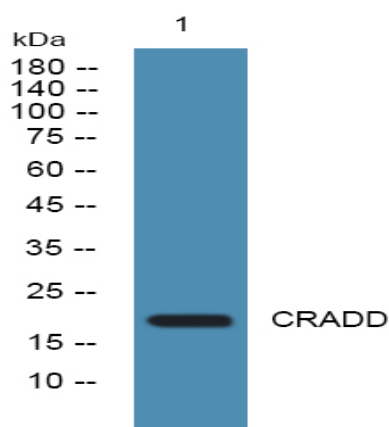
Subcellular Location :

Cytoplasm . Nucleus .

Expression :

Constitutively expressed in most tissues, with particularly high expression in adult heart, testis, liver, skeletal muscle, fetal liver and kidney.

Products Images



Western blot analysis of lysates from K562 cells, primary antibody was diluted at 1:1000, 4° over night