

Six2 Polyclonal Antibody

Catalog No :	YT4306
Reactivity :	Human;Mouse
Applications :	WB;IHC
Target :	Six2
Gene Name :	SIX2
Protein Name :	Homeobox protein SIX2
Human Gene Id :	10736
Human Swiss Prot No :	Q9NPC8
Mouse Gene Id :	20472
Mouse Swiss Prot No :	Q62232
Immunogen :	Synthesized peptide derived from Six2 . at AA range: 30-110
Specificity :	Six2 Polyclonal Antibody detects endogenous levels of Six2 protein.
Formulation :	Liquid in PBS containing 50% glycerol, 0.5% BSA and 0.02% sodium azide.
Source :	Polyclonal, Rabbit,IgG
Dilution :	WB 1:500-2000;IHC 1:50-300
Purification :	The antibody was affinity-purified from rabbit antiserum by affinity-chromatography using epitope-specific immunogen.
Concentration :	1 mg/ml
Storage Stability :	-15°C to -25°C/1 year(Do not lower than -25°C)

Observed Band : 33kD

Background : This gene is a member of the vertebrate gene family which encode proteins homologous to the Drosophila 'sine oculis' homeobox protein. The encoded protein is a transcription factor which, like other members of this gene family, may be involved in limb or eye development. [provided by RefSeq, Dec 2008],

Function : function:May be involved in limb tendon and ligament development.,similarity:Belongs to the SIX/Sine oculis homeobox family.,similarity:Contains 1 homeobox DNA-binding domain.,tissue specificity:Strongly expressed in skeletal muscle.,

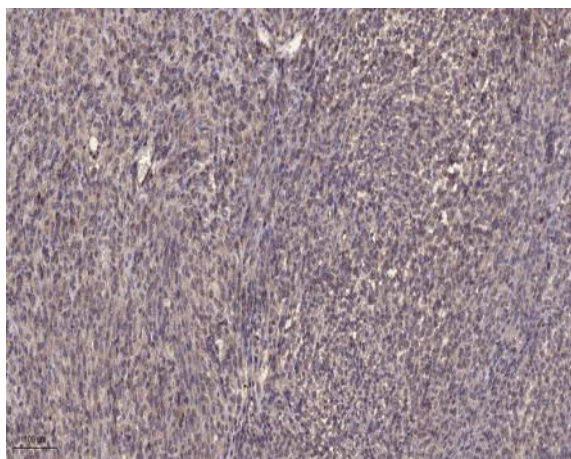
Subcellular Location : Nucleus .

Expression : Strongly expressed in skeletal muscle. Expressed in Wilms' tumor and in the cap mesenchyme of fetal kidney (at protein level).

Products Images



Western blot analysis of SIX2 Antibody. The lane on the right is blocked with the SIX2 peptide.



Immunohistochemical analysis of paraffin-embedded human Colon cancer. 1, Antibody was diluted at 1:200(4° overnight). 2, Tris-EDTA,pH9.0 was used for antigen retrieval. 3,Secondary antibody was diluted at 1:200(room temperature, 45min).