

Rab 24 Polyclonal Antibody

Catalog No :	YT3923
Reactivity :	Human;Mouse;Rat
Applications :	IHC;IF;ELISA
Target :	Rab 24
Gene Name :	RAB24
Protein Name :	Ras-related protein Rab-24
Human Gene Id :	53917
Human Swiss Prot No :	Q969Q5
Mouse Gene Id :	19336
Mouse Swiss Prot No :	P35290
Immunogen :	Synthesized peptide derived from Rab 24 . at AA range: 90-170
Specificity :	Rab 24 Polyclonal Antibody detects endogenous levels of Rab 24 protein.
Formulation :	Liquid in PBS containing 50% glycerol, 0.5% BSA and 0.02% sodium azide.
Source :	Polyclonal, Rabbit,IgG
Dilution :	IHC 1:100 - 1:300. ELISA: 1:10000.. IF 1:50-200
Purification :	The antibody was affinity-purified from rabbit antiserum by affinity-chromatography using epitope-specific immunogen.
Concentration :	1 mg/ml
Storage Stability :	-15°C to -25°C/1 year(Do not lower than -25°C)

Molecularweight : 23kD

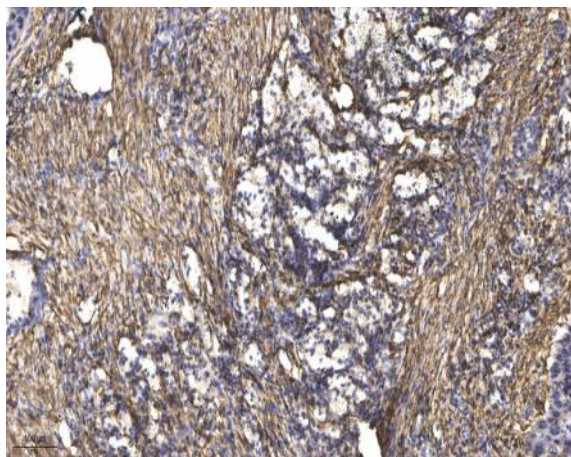
Background : RAB24 is a small GTPase of the Rab subfamily of Ras-related proteins that regulate intracellular protein trafficking (Oikkonen et al., 1993 [PubMed 8126105]).[supplied by OMIM, Aug 2009],

Function : function:May be involved in autophagy-related processes.,induction:By extensive retinoic acid treatment, in Ntera-2 teratoma cell line induced to differentiate into post-mitotic neurons (NTN2) (at protein level).,miscellaneous:The unusual Ser-67, instead of a conserved Gln in other family members, is the cause of low GTPase activity. As a result, the predominant nucleotide associated with the protein is GTP.,PTM:Isoprenylation is inefficient compared to other Rab family members.,similarity:Belongs to the small GTPase superfamily. Rab family.,subcellular location:Only about 20-25% is recovered in the particulate fraction.,subunit:Unlike other Rab family members, does not interact with GDP dissociation inhibitors (GDIs), including ARHGDIA and ARHGDIB.,

Subcellular Location : Cytoplasm, cytosol . Membrane ; Lipid-anchor . Only about 20-25% is recovered in the particulate fraction. .

Expression : Amygdala,Pancreas,Skin,Uterus,Whole embryo,

Products Images



Immunohistochemical analysis of paraffin-embedded human Squamous cell carcinoma of lung. 1, Antibody was diluted at 1:200(4° overnight). 2, Tris-EDTA,pH9.0 was used for antigen retrieval. 3,Secondary antibody was diluted at 1:200(room temperature, 45min).