

Rab 31 Polyclonal Antibody

Catalog No :	YT3928
Reactivity :	Human;Mouse;Rat
Applications :	WB;ELISA;IHC
Target :	Rab 31
Fields :	>>Endocytosis
Gene Name :	RAB31
Protein Name :	Ras-related protein Rab-31
Human Gene Id :	11031
Human Swiss Prot No :	Q13636
Mouse Gene Id :	106572
Mouse Swiss Prot No :	Q921E2
Rat Gene Id :	246324
Rat Swiss Prot No :	Q6GQP4
Immunogen :	Synthesized peptide derived from Rab 31 . at AA range: 50-130
Specificity :	Rab 31 Polyclonal Antibody detects endogenous levels of Rab 31 protein.
Formulation :	Liquid in PBS containing 50% glycerol, 0.5% BSA and 0.02% sodium azide.
Source :	Polyclonal, Rabbit,IgG
Dilution :	WB 1:500-2000;IHC 1:50-300; ELISA 2000-20000
Purification :	The antibody was affinity-purified from rabbit antiserum by affinity-

chromatography using epitope-specific immunogen.

Concentration : 1 mg/ml

Storage Stability : -15°C to -25°C/1 year (Do not lower than -25°C)

Observed Band : 21kD

Cell Pathway : Endocytosis;

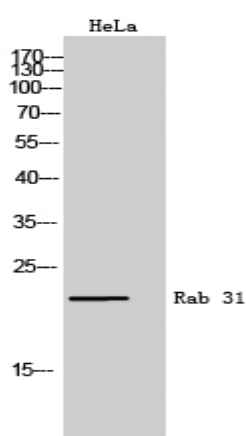
Background : Small GTP-binding proteins of the RAB family, such as RAB31, play essential roles in vesicle and granule targeting (Bao et al., 2002 [PubMed 11784320]). [supplied by OMIM, Jul 2009],

Function : similarity: Belongs to the small GTPase superfamily. Rab family., tissue specificity: Highest expression in placenta and brain with lower levels in heart and lung. Not detected in liver, skeletal muscle, kidney or pancreas.,

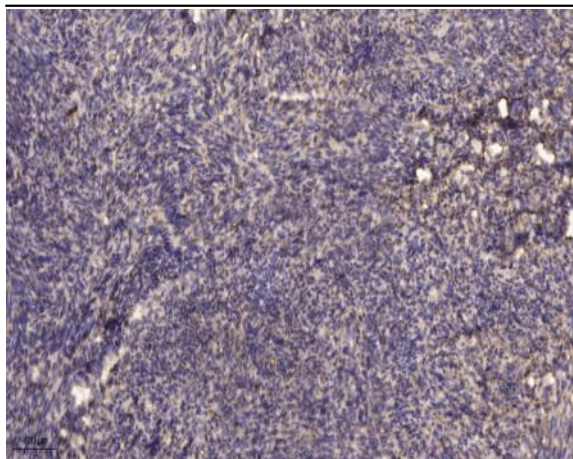
Subcellular Location : Golgi apparatus, trans-Golgi network . Golgi apparatus, trans-Golgi network membrane ; Lipid-anchor ; Cytoplasmic side . Early endosome . Cytoplasmic vesicle, phagosome . Cytoplasmic vesicle, phagosome membrane ; Lipid-anchor ; Cytoplasmic side . Rapidly recruited to phagosomes containing S.aureus or M.tuberculosis (PubMed:21255211) . .

Expression : Highest expression in placenta and brain with lower levels in heart and lung. Not detected in liver, skeletal muscle, kidney or pancreas.

Products Images



Western Blot analysis of HeLa cells using Rab 31 Polyclonal Antibody



Immunohistochemical analysis of paraffin-embedded human uterus. 1, Antibody was diluted at 1:200(4° overnight). 2, Tris-EDTA,pH9.0 was used for antigen retrieval. 3,Secondary antibody was diluted at 1:200(room temperature, 45min).