

## Rab 6C Polyclonal Antibody

<b>Catalog No :</b>	YT3938
<b>Reactivity :</b>	Human;Mouse;Rat
<b>Applications :</b>	WB;IHC
<b>Target :</b>	Rab 6C
<b>Gene Name :</b>	RAB6C
<b>Protein Name :</b>	Ras-related protein Rab-6C
<b>Human Gene Id :</b>	84084
<b>Human Swiss Prot No :</b>	Q9H0N0
<b>Immunogen :</b>	The antiserum was produced against synthesized peptide derived from human RAB6C. AA range:165-214
<b>Specificity :</b>	Rab 6C Polyclonal Antibody detects endogenous levels of Rab 6C protein.
<b>Formulation :</b>	Liquid in PBS containing 50% glycerol, 0.5% BSA and 0.02% sodium azide.
<b>Source :</b>	Polyclonal, Rabbit,IgG
<b>Dilution :</b>	WB 1:500-2000;IHC 1:50-300
<b>Purification :</b>	The antibody was affinity-purified from rabbit antiserum by affinity-chromatography using epitope-specific immunogen.
<b>Concentration :</b>	1 mg/ml
<b>Storage Stability :</b>	-15°C to -25°C/1 year(Do not lower than -25°C)
<b>Observed Band :</b>	28kD
<b>Background :</b>	function:Protein transport. Regulator of membrane traffic from the Golgi apparatus towards the endoplasmic reticulum (ER). Has a low GTPase

activity.,PTM:Phosphorylated upon DNA damage, probably by ATM or ATR.,similarity:Belongs to the small GTPase superfamily. Rab family.,subunit:Interacts with SCYL1BP1. Interacts with VSP52 and RABGAP1. Isoform 1 interacts with RAB6KIFL but not isoform 2. Isoforms 1 and 2 interact with BICD1 and BICD2. Interacts with TMF1.,tissue specificity:Ubiquitous.,

**Function :**

function:Protein transport. Regulator of membrane traffic from the Golgi apparatus towards the endoplasmic reticulum (ER). Has a low GTPase activity.,PTM:Phosphorylated upon DNA damage, probably by ATM or ATR.,similarity:Belongs to the small GTPase superfamily. Rab family.,subunit:Interacts with SCYL1BP1. Interacts with VSP52 and RABGAP1. Isoform 1 interacts with RAB6KIFL but not isoform 2. Isoforms 1 and 2 interact with BICD1 and BICD2. Interacts with TMF1.,tissue specificity:Ubiquitous.,

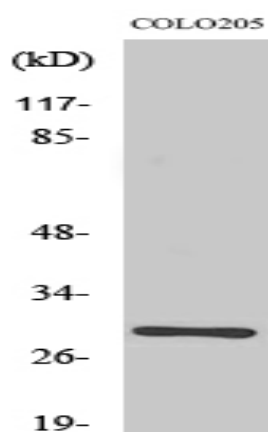
**Subcellular Location :**

Nucleus . Cytoplasm . Cytoplasm, cytoskeleton, microtubule organizing center, centrosome .

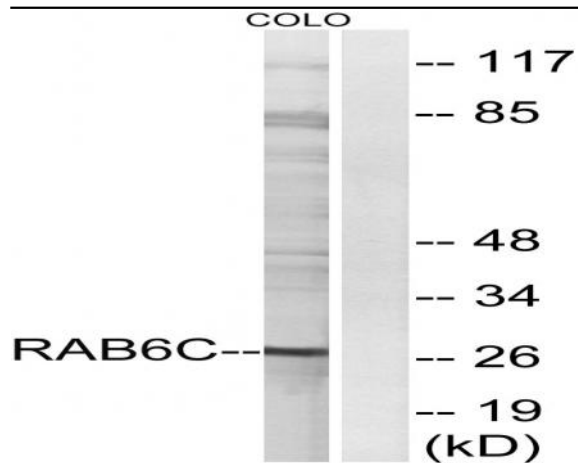
**Expression :**

Highest levels are found in fetal and adult brain, prostate, testis and spinal cord. Undetectable expression in adrenal gland, skeletal muscle, bone marrow, fetal, and adult liver, heart, salivary gland, and trachea. Detected in the HEK293, HEK293T, LNCaP, MCF-7, T-47D and EVSA-T cell lines (at protein level).

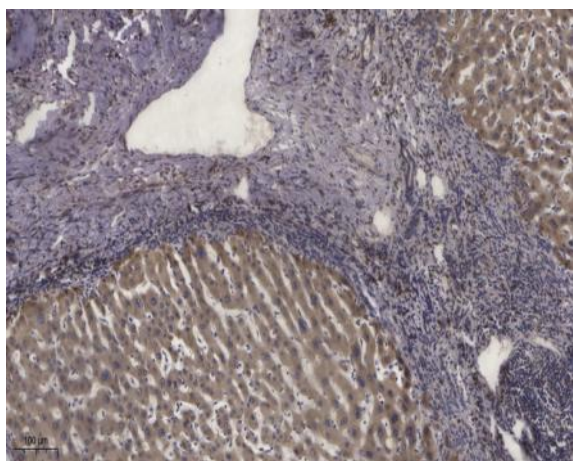
## Products Images



Western Blot analysis of various cells using Rab 6C Polyclonal Antibody



Western blot analysis of lysates from COLO cells, using RAB6C Antibody. The lane on the right is blocked with the synthesized peptide.



Immunohistochemical analysis of paraffin-embedded human liver cancer. 1, Antibody was diluted at 1:200(4° overnight). 2, Tris-EDTA,pH9.0 was used for antigen retrieval. 3,Secondary antibody was diluted at 1:200(room temperature, 45min).