

**RAB3IP Polyclonal Antibody**

<b>Catalog No :</b>	YT3946
<b>Reactivity :</b>	Human;Mouse;Rat
<b>Applications :</b>	WB;IHC;IF;ELISA
<b>Target :</b>	RAB3IP
<b>Gene Name :</b>	RAB3IP
<b>Protein Name :</b>	Rab-3A-interacting protein
<b>Human Gene Id :</b>	117177
<b>Human Swiss Prot No :</b>	Q96QF0
<b>Mouse Gene Id :</b>	216363
<b>Mouse Swiss Prot No :</b>	Q68EF0
<b>Rat Swiss Prot No :</b>	Q62739
<b>Immunogen :</b>	The antiserum was produced against synthesized peptide derived from human RAB3IP. AA range:257-306
<b>Specificity :</b>	RAB3IP Polyclonal Antibody detects endogenous levels of RAB3IP protein.
<b>Formulation :</b>	Liquid in PBS containing 50% glycerol, 0.5% BSA and 0.02% sodium azide.
<b>Source :</b>	Polyclonal, Rabbit,IgG
<b>Dilution :</b>	WB 1:500 - 1:2000. IHC 1:100 - 1:300. ELISA: 1:40000.. IF 1:50-200
<b>Purification :</b>	The antibody was affinity-purified from rabbit antiserum by affinity-chromatography using epitope-specific immunogen.
<b>Concentration :</b>	1 mg/ml

**Storage Stability :** -15°C to -25°C/1 year (Do not lower than -25°C)

**Observed Band :** 53kD

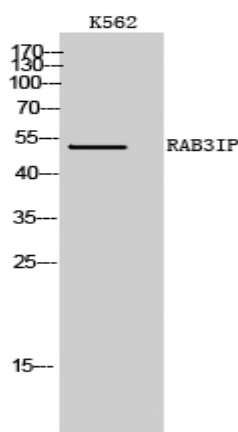
**Background :** similarity:Belongs to the SEC2 family.,subcellular location:Predominantly cytoplasmic but a small proportion colocalizes with SSX2 in the nucleus.,subunit:Interacts with the N-terminal region of SSX2. Interacts with RAB3A and RAB3D.,tissue specificity:Expressed in brain, kidney, heart, pancreas and placenta. Not detected in skeletal muscle or liver.,

**Function :** similarity:Belongs to the SEC2 family.,subcellular location:Predominantly cytoplasmic but a small proportion colocalizes with SSX2 in the nucleus.,subunit:Interacts with the N-terminal region of SSX2. Interacts with RAB3A and RAB3D.,tissue specificity:Expressed in brain, kidney, heart, pancreas and placenta. Not detected in skeletal muscle or liver.,

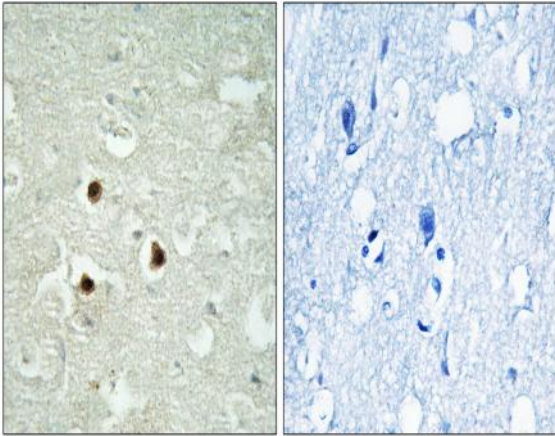
**Subcellular Location :** Cytoplasm . Nucleus . Cytoplasm, cytoskeleton . Cell projection, lamellipodium. Vesicle . Cytoplasm, cytoskeleton, microtubule organizing center, centrosome . Predominantly cytoplasmic but a small proportion colocalizes with SSX2 in the nucleus. Activation of protein kinase C results in redistribution to the periphery of lamellipodia. .

**Expression :** Expressed in brain, kidney, heart, pancreas and placenta. Not detected in skeletal muscle or liver.

## Products Images



Western Blot analysis of K562 cells using RAB3IP Polyclonal Antibody



Immunohistochemistry analysis of paraffin-embedded human brain tissue, using RAB3IP Antibody. The picture on the right is blocked with the synthesized peptide.