

Ran BP-17 Polyclonal Antibody

Catalog No :	YT3999
Reactivity :	Human;Mouse
Applications :	WB;IHC
Target :	Ran BP-17
Fields :	>>Nucleocytoplasmic transport
Gene Name :	RANBP17
Protein Name :	Ran-binding protein 17
Human Gene Id :	64901
Human Swiss Prot No :	Q9H2T7
Mouse Gene Id :	66011
Mouse Swiss Prot No :	Q99NF8
Immunogen :	The antiserum was produced against synthesized peptide derived from human RANBP17. AA range:145-194
Specificity :	Ran BP-17 Polyclonal Antibody detects endogenous levels of Ran BP-17 protein.
Formulation :	Liquid in PBS containing 50% glycerol, 0.5% BSA and 0.02% sodium azide.
Source :	Polyclonal, Rabbit,IgG
Dilution :	WB 1:500-2000;IHC 1:50-300
Purification :	The antibody was affinity-purified from rabbit antiserum by affinity-chromatography using epitope-specific immunogen.
Concentration :	1 mg/ml

Storage Stability : -15°C to -25°C/1 year(Do not lower than -25°C)

Observed Band : 125kD

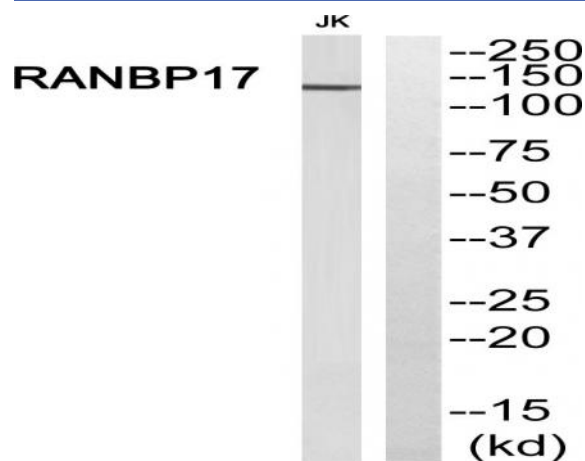
Background : RAN binding protein 17(RANBP17) Homo sapiens The transport of protein and large RNAs through the nuclear pore complexes (NPC) is an energy-dependent and regulated process. The import of proteins with a nuclear localization signal (NLS) is accomplished by recognition of one or more clusters of basic amino acids by the importin-alpha/beta complex; see MIM 600685 and MIM 602738. The small GTPase RAN (MIM 601179) plays a key role in NLS-dependent protein import. RAN-binding protein-17 is a member of the importin-beta superfamily of nuclear transport receptors.[supplied by OMIM, Jul 2002],

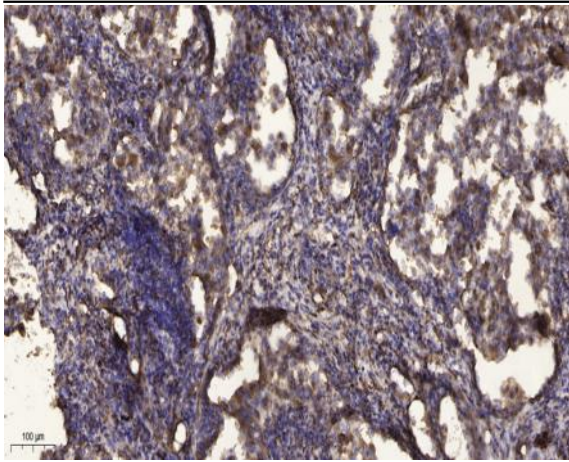
Function : function:May function as a nuclear transport receptor.,similarity:Belongs to the exportin family.,subunit:Binds to nucleoporins and the GTP-bound form of Ran.,tissue specificity:Highly expressed in testis, moderately in pancreas and weakly in other tissues studied.,

Subcellular Location : Cytoplasm . Nucleus . Nucleus, nuclear pore complex .

Expression : Highly expressed in testis, moderately in pancreas and weakly in other tissues studied.

Products Images





Immunohistochemical analysis of paraffin-embedded human Squamous cell carcinoma of lung. 1, Antibody was diluted at 1:200(4° overnight). 2, Tris-EDTA,pH9.0 was used for antigen retrieval. 3,Secondary antibody was diluted at 1:200(room temperature, 45min).