

Rho H Polyclonal Antibody

Catalog No :	YT4083
Reactivity :	Human;Mouse;Rat
Applications :	WB;IHC;IF;ELISA
Target :	Rho H
Fields :	>>Leukocyte transendothelial migration;>>Salmonella infection
Gene Name :	RhoH
Protein Name :	Rho-related GTP-binding protein RhoH
Human Gene Id :	399
Human Swiss Prot No :	Q15669
Mouse Gene Id :	74734
Mouse Swiss Prot No :	Q9D3G9
Immunogen :	The antiserum was produced against synthesized peptide derived from human RhoH. AA range:141-190
Specificity :	Rho H Polyclonal Antibody detects endogenous levels of Rho H protein.
Formulation :	Liquid in PBS containing 50% glycerol, 0.5% BSA and 0.02% sodium azide.
Source :	Polyclonal, Rabbit,IgG
Dilution :	WB 1:500 - 1:2000. IHC 1:100 - 1:300. IF 1:200 - 1:1000. ELISA: 1:20000. Not yet tested in other applications.
Purification :	The antibody was affinity-purified from rabbit antiserum by affinity-chromatography using epitope-specific immunogen.
Concentration :	1 mg/ml

Storage Stability : -15°C to -25°C/1 year(Do not lower than -25°C)

Observed Band : 21kD

Cell Pathway : Leukocyte transendothelial migration;

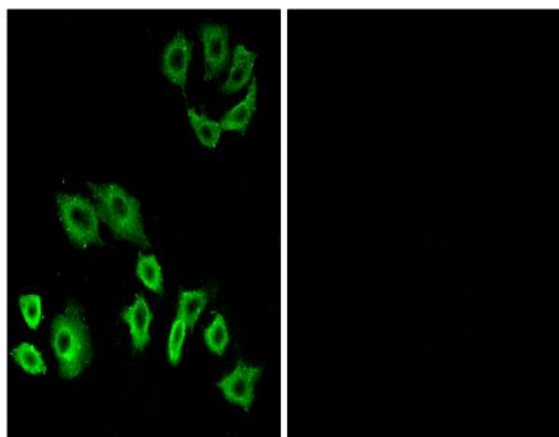
Background : The protein encoded by this gene is a member of the Ras superfamily of guanosine triphosphate (GTP)-metabolizing enzymes. The encoded protein is expressed in hematopoietic cells, where it functions as a negative regulator of cell growth and survival. This gene may be hypermutated or misexpressed in leukemias and lymphomas. Chromosomal translocations in non-Hodgkin's lymphoma occur between this locus and B-cell CLL/lymphoma 6 (BCL6) on chromosome 3, leading to the production of fusion transcripts. Alternative splicing in the 5' untranslated region results in multiple transcript variants that encode the same protein. [provided by RefSeq, May 2013],

Function : disease:A chromosomal aberration involving RHOH is found in a non-Hodgkin lymphoma cell line. Translocation t(3;4)(q27;p11) with BCL6.,similarity:Belongs to the small GTPase superfamily. Rho family.,tissue specificity:Transcribed only in hemopoietic cells.,

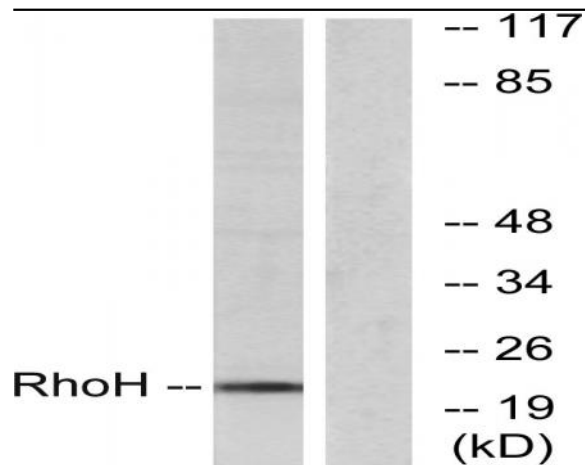
Subcellular Location : Cytoplasm . Cell membrane ; Lipid-anchor ; Cytoplasmic side . Colocalizes together with ZAP70 in the immunological synapse. .

Expression : Expressed only in hematopoietic cells. Present at very high levels in the thymus, less abundant in the spleen, and least abundant in the bone marrow. Expressed at a higher level in the TH1 subtype of T-helper cells than in the TH2 subpopulation. Expressed in neutrophils under inflammatory conditions, such as cystic fibrosis, ulcerative colitis and appendicitis.

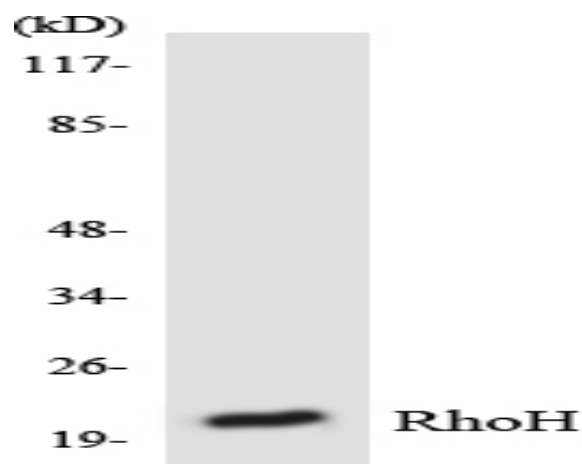
Products Images



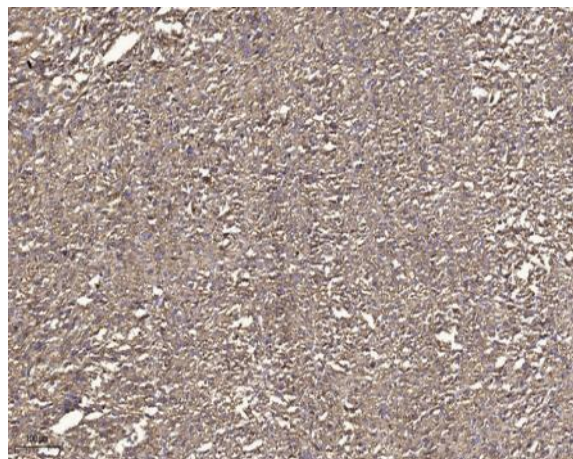
Immunofluorescence analysis of A549 cells, using RhoH Antibody. The picture on the right is blocked with the synthesized peptide.



Western blot analysis of lysates from HT-29 cells, using RhoH Antibody. The lane on the right is blocked with the synthesized peptide.



Western blot analysis of the lysates from RAW264.7 cells using RhoH antibody.



Immunohistochemical analysis of paraffin-embedded human small intestinal carcinoma tissue. 1, primary Antibody was diluted at 1:200 (4° overnight). 2, Sodium citrate pH 6.0 was used for antigen retrieval (>98° C, 20min). 3, Secondary antibody was diluted at 1:200