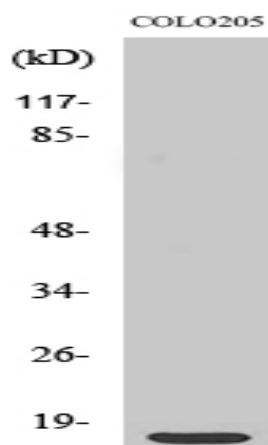


Ribosomal Protein S12 Polyclonal Antibody

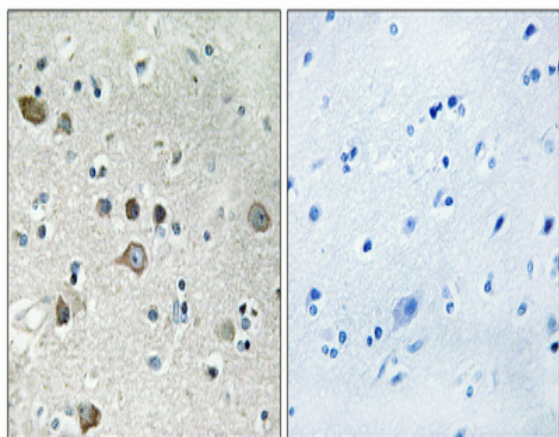
Catalog No :	YT4122
Reactivity :	Human;Mouse;Rat
Applications :	WB;IHC;IF;ELISA
Target :	Ribosomal Protein S12
Fields :	>>Ribosome;>>Coronavirus disease - COVID-19
Gene Name :	RPS12
Protein Name :	40S ribosomal protein S12
Human Gene Id :	6206
Human Swiss Prot No :	P25398
Mouse Swiss Prot No :	P63323
Rat Swiss Prot No :	P63324
Immunogen :	The antiserum was produced against synthesized peptide derived from human RPS12. AA range:83-132
Specificity :	Ribosomal Protein S12 Polyclonal Antibody detects endogenous levels of Ribosomal Protein S12 protein.
Formulation :	Liquid in PBS containing 50% glycerol, 0.5% BSA and 0.02% sodium azide.
Source :	Polyclonal, Rabbit,IgG
Dilution :	WB 1:500 - 1:2000. IHC 1:100 - 1:300. IF 1:200 - 1:1000. ELISA: 1:40000. Not yet tested in other applications.
Purification :	The antibody was affinity-purified from rabbit antiserum by affinity-chromatography using epitope-specific immunogen.

Concentration :	1 mg/ml
Storage Stability :	-15°C to -25°C/1 year(Do not lower than -25°C)
Observed Band :	15kD
Cell Pathway :	Ribosome;
Background :	Ribosomes, the organelles that catalyze protein synthesis, consist of a small 40S subunit and a large 60S subunit. Together these subunits are composed of 4 RNA species and approximately 80 structurally distinct proteins. This gene encodes a ribosomal protein that is a component of the 40S subunit. The protein belongs to the S12E family of ribosomal proteins. It is located in the cytoplasm. Increased expression of this gene in colorectal cancers compared to matched normal colonic mucosa has been observed. As is typical for genes encoding ribosomal proteins, there are multiple processed pseudogenes of this gene dispersed through the genome. [provided by RefSeq, Jul 2008],
Function :	similarity:Belongs to the ribosomal protein S12e family.,
Subcellular Location :	Cytoplasm.
Expression :	Cervix carcinoma,Embryonic stem cell,Hepatoma,Mammary carcinoma,Placenta,Skin,Testi

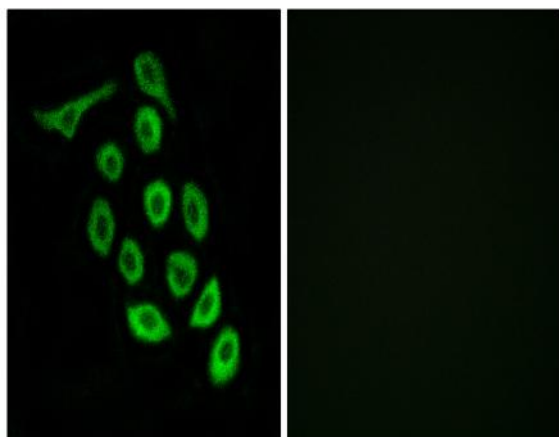
Products Images



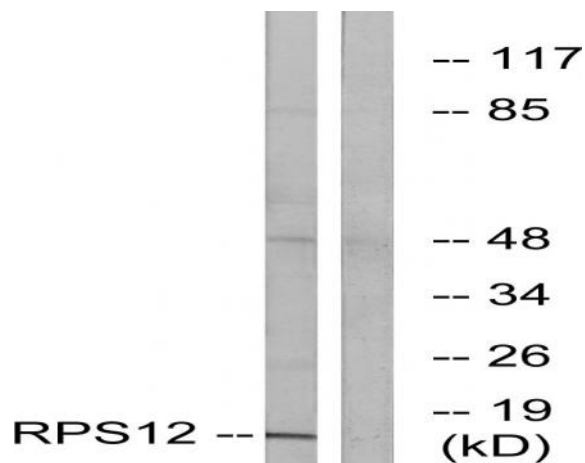
Western Blot analysis of various cells using Ribosomal Protein S12 Polyclonal Antibody



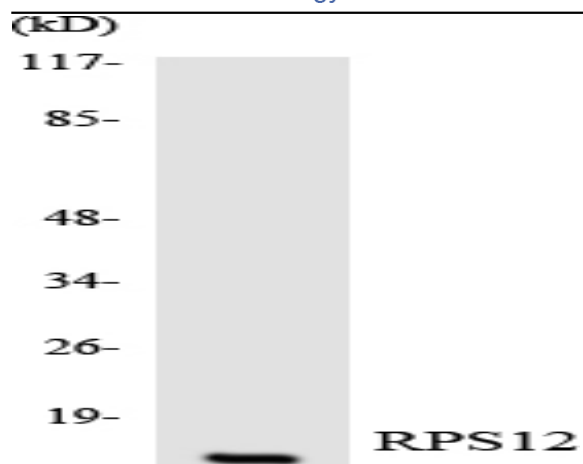
Immunohistochemical analysis of paraffin-embedded Human brain. Antibody was diluted at 1:100(4° overnight). High-pressure and temperature Tris-EDTA,pH8.0 was used for antigen retrieval. Negative control (right) obtained from antibody was pre-absorbed by immunogen peptide.



Immunofluorescence analysis of A549 cells, using RPS12 Antibody. The picture on the right is blocked with the synthesized peptide.



Western blot analysis of lysates from COLO cells, using RPS12 Antibody. The lane on the right is blocked with the synthesized peptide.



Western blot analysis of the lysates from HUVEC cells using RPS12 antibody.