

## Ribosomal Protein S27L Polyclonal Antibody

|                              |   |
|------------------------------|---|
| <b>Catalog No :</b>          | YT4133  |
| <b>Reactivity :</b>          | Human;Mouse   |
| <b>Applications :</b>        | WB;IHC;IF;ELISA   |
| <b>Target :</b>              | Ribosomal Protein S27L  |
| <b>Fields :</b>              | >>Ribosome;>>Coronavirus disease - COVID-19   |
| <b>Gene Name :</b>           | RPS27L  |
| <b>Protein Name :</b>        | 40S ribosomal protein S27-like  |
| <b>Human Gene Id :</b>       | 51065   |
| <b>Human Swiss Prot No :</b> | Q71UM5  |
| <b>Mouse Gene Id :</b>       | 67941   |
| <b>Mouse Swiss Prot No :</b> | Q6ZWY3  |
| <b>Immunogen :</b>           | The antiserum was produced against synthesized peptide derived from human RPS27L. AA range:1-50                       |
| <b>Specificity :</b>         | Ribosomal Protein S27L Polyclonal Antibody detects endogenous levels of Ribosomal Protein S27L protein.               |
| <b>Formulation :</b>         | Liquid in PBS containing 50% glycerol, 0.5% BSA and 0.02% sodium azide.   |
| <b>Source :</b>              | Polyclonal, Rabbit,IgG  |
| <b>Dilution :</b>            | WB 1:500 - 1:2000. IHC 1:100 - 1:300. ELISA: 1:10000.. IF 1:50-200  |
| <b>Purification :</b>        | The antibody was affinity-purified from rabbit antiserum by affinity-chromatography using epitope-specific immunogen. |
| <b>Concentration :</b>       | 1 mg/ml   |

**Storage Stability :** -15°C to -25°C/1 year(Do not lower than -25°C)

**Observed Band :** 18kD

**Cell Pathway :** Ribosome;

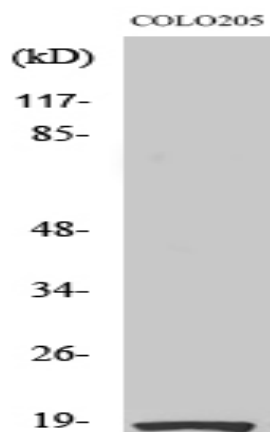
**Background :** This gene encodes a protein sharing 96% amino acid similarity with ribosomal protein S27, which suggests the encoded protein may be a component of the 40S ribosomal subunit. [provided by RefSeq, Jul 2008],

**Function :** cofactor: Binds 1 zinc ion per subunit .,similarity: Belongs to the ribosomal protein S27e family.,

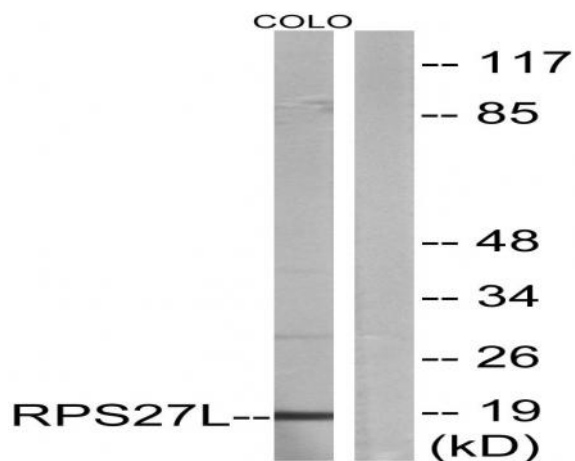
**Subcellular Location :** nucleus,nucleoplasm,ribosome,cytosolic small ribosomal subunit,

**Expression :** Kidney,Umbilical cord blood,

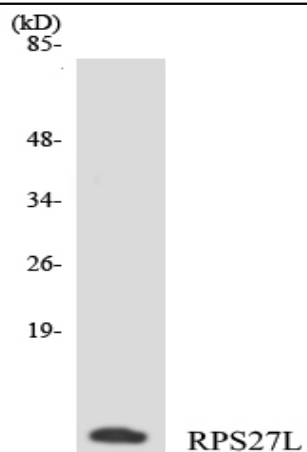
## Products Images



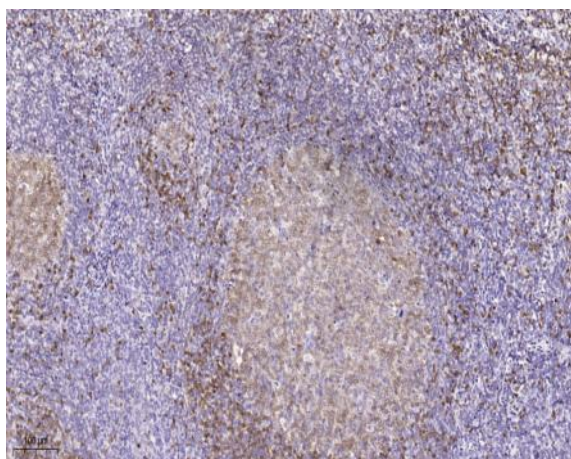
Western Blot analysis of various cells using Ribosomal Protein S27L Polyclonal Antibody



Western blot analysis of lysates from COLO cells, using RPS27L Antibody. The lane on the right is blocked with the synthesized peptide.



Western blot analysis of the lysates from COLO205 cells using RPS27L antibody.



Immunohistochemical analysis of paraffin-embedded human tonsil. 1, Tris-EDTA, pH 9.0 was used for antigen retrieval. 2 Antibody was diluted at 1:200 (4° overnight). 3, Secondary antibody was diluted at 1:200 (room temperature, 45min).