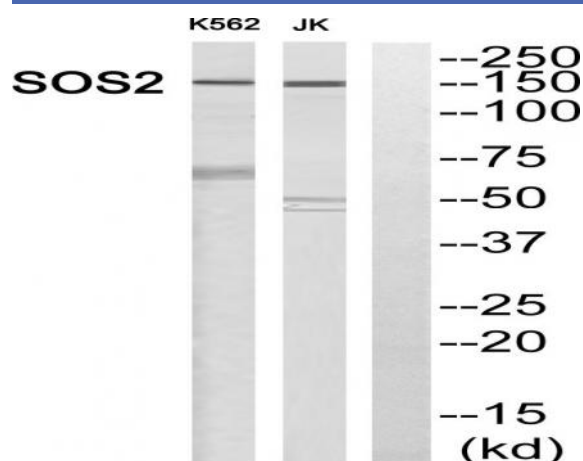


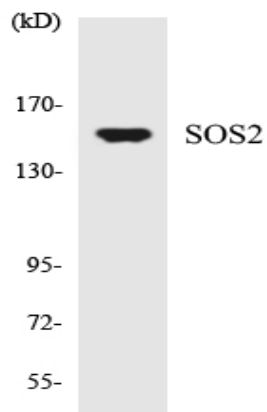
## Sos 2 Polyclonal Antibody

|                              |  |
|------------------------------|--|
| <b>Catalog No :</b>          | YT4367   |
| <b>Reactivity :</b>          | Human;Rat;Mouse;   |
| <b>Applications :</b>        | WB;ELISA;IHC   |
| <b>Target :</b>              | Sos 2  |
| <b>Fields :</b>              | >>EGFR tyrosine kinase inhibitor resistance;>>Endocrine resistance;>>MAPK signaling pathway;>>ErbB signaling pathway;>>Ras signaling pathway;>>Chemokine signaling pathway;>>FoxO signaling pathway;>>Phospholipase D signaling pathway;>>mTOR signaling pathway;>>PI3K-Akt signaling pathway;>>Focal adhesion;>>Gap junction;>>JAK-STAT signaling pathway;>>Natural killer cell mediated cytotoxicity;>>T cell receptor signaling pathway;>>B cell receptor signaling pathway;>>Fc epsilon RI signaling pathway;>>Thermogenesis;>>Neurotrophin signaling pathway;>>Regulation of actin cytoskeleton;>>Insulin signaling pathway;>>GnRH signaling pathway;>>Estrogen signaling pathway;>>Prolactin signaling pathway;>>Relaxin signaling pathway;>>Growth hormone synthesis, secretion and action;>>Alcoholism;>>Hepatitis C;>>Hepatitis B;>>Human cytomegalovirus infection;>>Human papillomavirus infection;>>Pathways in cancer;>>Proteoglycans in cancer;>>MicroRNAs in cancer;>>Chemical carcinogenesis - receptor activation;>>Che |
| <b>Gene Name :</b>           | SOS2   |
| <b>Protein Name :</b>        | Son of sevenless homolog 2   |
| <b>Human Gene Id :</b>       | 6655   |
| <b>Human Swiss Prot No :</b> | Q07890   |
| <b>Mouse Swiss Prot No :</b> | Q02384   |
| <b>Immunogen :</b>           | The antiserum was produced against synthesized peptide derived from human SOS2. AA range:631-680   |
| <b>Specificity :</b>         | Sos 2 Polyclonal Antibody detects endogenous levels of Sos 2 protein.  |
| <b>Formulation :</b>         | Liquid in PBS containing 50% glycerol, 0.5% BSA and 0.02% sodium azide.  |

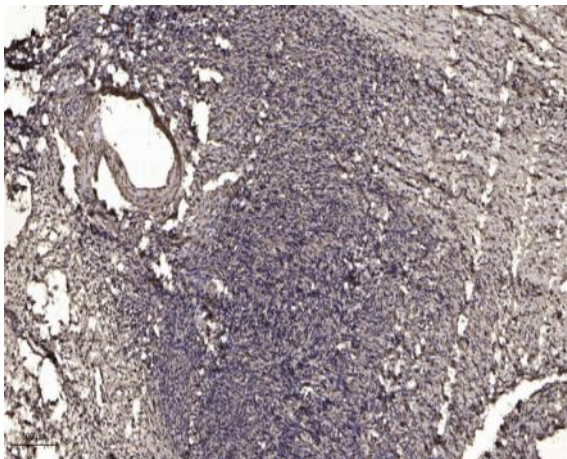
|                               |  |
|-------------------------------|--|
| <b>Source :</b>               | Polyclonal, Rabbit,IgG   |
| <b>Dilution :</b>             | WB 1:500-2000;IHC 1:50-300; ELISA 2000-20000   |
| <b>Purification :</b>         | The antibody was affinity-purified from rabbit antiserum by affinity-chromatography using epitope-specific immunogen.  |
| <b>Concentration :</b>        | 1 mg/ml  |
| <b>Storage Stability :</b>    | -15°C to -25°C/1 year(Do not lower than -25°C)   |
| <b>Observed Band :</b>        | 150kD  |
| <b>Cell Pathway :</b>         | MAPK_ERK_Growth;MAPK_G_Protein;ErbB_HER;Chemokine;Dorso-ventral axis formation;Focal adhesion;Gap junction;Jak_STAT;Natural killer cell mediated cytotoxicity;T_Cell_Receptor;B_Cell_Antigen;Fc epsilon  |
| <b>Background :</b>           | This gene encodes a regulatory protein that is involved in the positive regulation of ras proteins. Mutations in this gene are associated with Noonan Syndrome-9. [provided by RefSeq, Jul 2016],  |
| <b>Function :</b>             | function:Promotes the exchange of Ras-bound GDP by GTP.,online information:Son of sevenless entry,similarity:Contains 1 DH (DBL-homology) domain.,similarity:Contains 1 N-terminal Ras-GEF domain.,similarity:Contains 1 PH domain.,similarity:Contains 1 Ras-GEF domain., |
| <b>Subcellular Location :</b> | intracellular,cytosol,   |
| <b>Expression :</b>           | Brain,Placenta,  |

## Products Images





Western blot analysis of the lysates from HT-29 cells using SOS2 antibody.



Immunohistochemical analysis of paraffin-embedded human oophoroma. 1, Antibody was diluted at 1:200(4° overnight). 2, Tris-EDTA,pH9.0 was used for antigen retrieval. 3,Secondary antibody was diluted at 1:200(room temperature, 45min).