

RRP22 Polyclonal Antibody

| | |
|------------------------------|---|
| Catalog No : | YT4177 |
| Reactivity : | Human;Mouse |
| Applications : | WB;ELISA |
| Target : | RRP22 |
| Gene Name : | RASL10A |
| Protein Name : | Ras-like protein family member 10A |
| Human Gene Id : | 10633 |
| Human Swiss Prot No : | Q92737 |
| Mouse Gene Id : | 75668 |
| Mouse Swiss Prot No : | Q8K5A4 |
| Immunogen : | The antiserum was produced against synthesized peptide derived from human RASL10A. AA range:107-156 |
| Specificity : | RRP22 Polyclonal Antibody detects endogenous levels of RRP22 protein. |
| Formulation : | Liquid in PBS containing 50% glycerol, 0.5% BSA and 0.02% sodium azide. |
| Source : | Polyclonal, Rabbit,IgG |
| Dilution : | WB 1:500 - 1:2000. ELISA: 1:40000. Not yet tested in other applications. |
| Purification : | The antibody was affinity-purified from rabbit antiserum by affinity-chromatography using epitope-specific immunogen. |
| Concentration : | 1 mg/ml |
| Storage Stability : | -15°C to -25°C/1 year(Do not lower than -25°C) |

Observed Band : 30kD

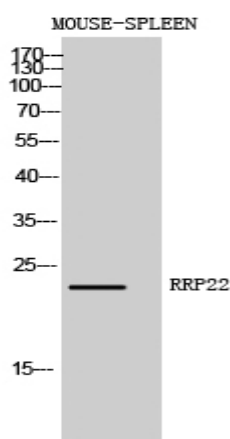
Background : similarity:Belongs to the small GTPase superfamily. Ras family.,

Function : similarity:Belongs to the small GTPase superfamily. Ras family.,

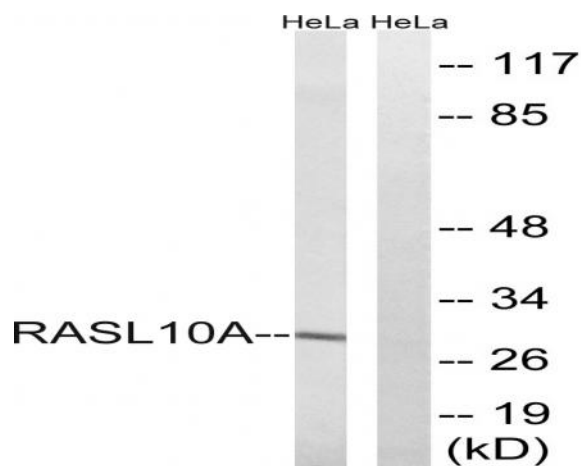
Subcellular Location : Cell membrane ; Lipid-anchor ; Cytoplasmic side . Nucleus, nucleolus . May cycle in and out of the nucleolus in a GTP-dependent manner.

Expression : Expression appears to be strictly limited to the central nervous system.

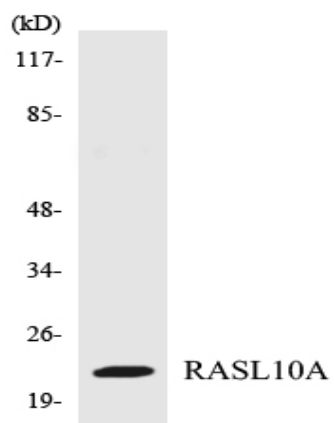
Products Images



Western Blot analysis of MOUSE-SPLEEN cells using RRP22 Polyclonal Antibody diluted at 1:1000



Western blot analysis of lysates from HeLa cells, using RASL10A Antibody. The lane on the right is blocked with the synthesized peptide.



Western blot analysis of the lysates from 293 cells using RASL10A antibody.