

## S-100A10 Polyclonal Antibody

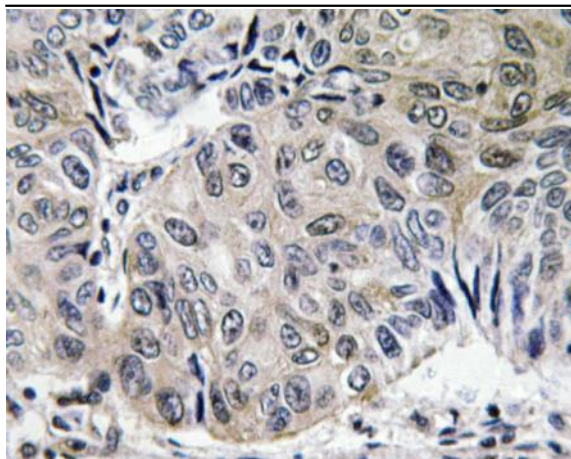
<b>Catalog No :</b>	YT4198
<b>Reactivity :</b>	Human;Mouse;Rat
<b>Applications :</b>	WB;IHC;IF;ELISA
<b>Target :</b>	S-100A10
<b>Fields :</b>	>>Salmonella infection
<b>Gene Name :</b>	S100A10
<b>Protein Name :</b>	Protein S100-A10
<b>Human Gene Id :</b>	6281
<b>Human Swiss Prot No :</b>	P60903
<b>Mouse Gene Id :</b>	20194
<b>Mouse Swiss Prot No :</b>	P08207
<b>Rat Gene Id :</b>	81778
<b>Rat Swiss Prot No :</b>	P05943
<b>Immunogen :</b>	The antiserum was produced against synthesized peptide derived from human S-100A10. AA range:3-52
<b>Specificity :</b>	S-100A10 Polyclonal Antibody detects endogenous levels of S-100A10 protein.
<b>Formulation :</b>	Liquid in PBS containing 50% glycerol, 0.5% BSA and 0.02% sodium azide.
<b>Source :</b>	Polyclonal, Rabbit,IgG
<b>Dilution :</b>	WB 1:500 - 1:2000. IHC 1:100 - 1:300. ELISA: 1:40000.. IF 1:50-200

<b>Purification :</b>	The antibody was affinity-purified from rabbit antiserum by affinity-chromatography using epitope-specific immunogen.
<b>Concentration :</b>	1 mg/ml
<b>Storage Stability :</b>	-15°C to -25°C/1 year(Do not lower than -25°C)
<b>Observed Band :</b>	11kD
<b>Background :</b>	The protein encoded by this gene is a member of the S100 family of proteins containing 2 EF-hand calcium-binding motifs. S100 proteins are localized in the cytoplasm and/or nucleus of a wide range of cells, and involved in the regulation of a number of cellular processes such as cell cycle progression and differentiation. S100 genes include at least 13 members which are located as a cluster on chromosome 1q21. This protein may function in exocytosis and endocytosis. [provided by RefSeq, Jul 2008],
<b>Function :</b>	function:Because S100A10 induces the dimerization of ANXA2/p36, it may function as a regulator of protein phosphorylation in that the ANXA2 monomer is the preferred target (in vitro) of tyrosine-specific kinase.,miscellaneous:Does not appear to bind calcium. Contains 2 ancestral calcium site related to EF-hand domains that have lost their ability to bind calcium.,similarity:Belongs to the S-100 family.,subunit:Heterotetramer containing 2 light chains of S100A10/p11 and 2 heavy chains of ANXA2/p36. Interacts with SCN10A.,
<b>Subcellular Location :</b>	integral component of membrane,extrinsic component of plasma membrane,membrane raft,extracellular exosome,
<b>Expression :</b>	Brain,Keratinocyte,

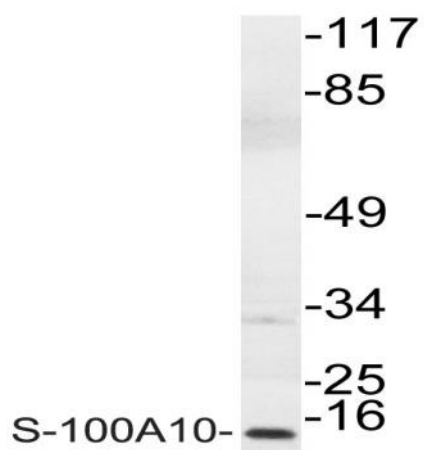
## Products Images



Western Blot analysis of various cells using S-100A10 Polyclonal Antibody



Immunohistochemistry analysis of S-100A10 antibody in paraffin-embedded human lung carcinoma tissue.



Western blot analysis of lysate from COLO cells, using S-100A10 antibody.