

**S-100A16 Polyclonal Antibody**

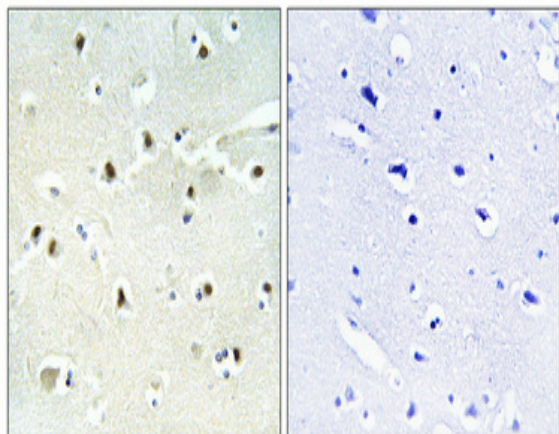
<b>Catalog No :</b>	YT4199
<b>Reactivity :</b>	Human;Rat
<b>Applications :</b>	WB;IHC;IF;ELISA
<b>Target :</b>	S-100A16
<b>Gene Name :</b>	S100A16
<b>Protein Name :</b>	Protein S100-A16
<b>Human Gene Id :</b>	140576
<b>Human Swiss Prot No :</b>	Q96FQ6
<b>Immunogen :</b>	The antiserum was produced against synthesized peptide derived from human S100A16. AA range:19-68
<b>Specificity :</b>	S-100A16 Polyclonal Antibody detects endogenous levels of S-100A16 protein.
<b>Formulation :</b>	Liquid in PBS containing 50% glycerol, 0.5% BSA and 0.02% sodium azide.
<b>Source :</b>	Polyclonal, Rabbit,IgG
<b>Dilution :</b>	WB 1:500 - 1:2000. IHC 1:100 - 1:300. ELISA: 1:40000.. IF 1:50-200
<b>Purification :</b>	The antibody was affinity-purified from rabbit antiserum by affinity-chromatography using epitope-specific immunogen.
<b>Concentration :</b>	1 mg/ml
<b>Storage Stability :</b>	-15°C to -25°C/1 year(Do not lower than -25°C)
<b>Observed Band :</b>	20kD
<b>Background :</b>	similarity:Belongs to the S-100 family.,similarity:Contains 2 EF-hand domains.,

**Function :** similarity:Belongs to the S-100 family.,similarity:Contains 2 EF-hand domains.,

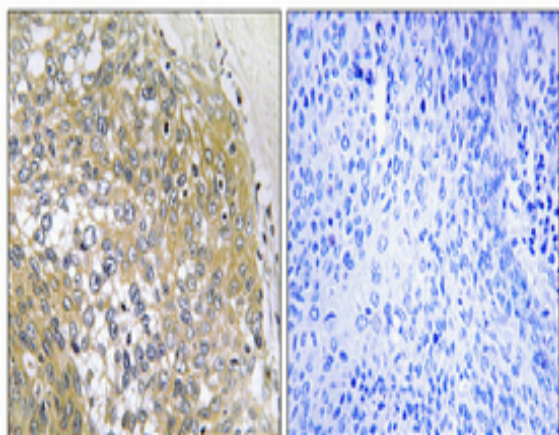
**Subcellular Location :** Nucleus, nucleolus . Cytoplasm . Primarily nucleolar. A high intracellular calcium level induces nucleolar exit and nucleocytoplasmic transport, whereas a low intracellular calcium level leads to nuclear translocation and accumulation within specific region of nucleoli (PubMed:17030513).

**Expression :** Ubiquitous (PubMed:14684152). Highly expressed in esophagus, adipose tissues and colon. Expressed at lower level in lung, brain, pancreas and skeletal muscle. Expression is up-regulated in tumors of bladder, lung, thyroid gland, pancreas and ovary (PubMed:14684152). Expressed in astrocytes (PubMed:17030513).

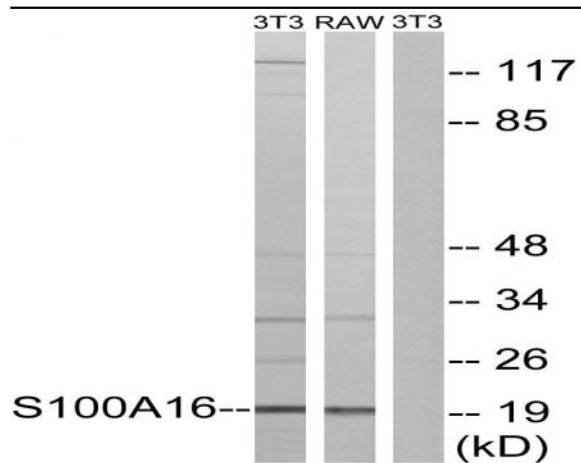
## Products Images



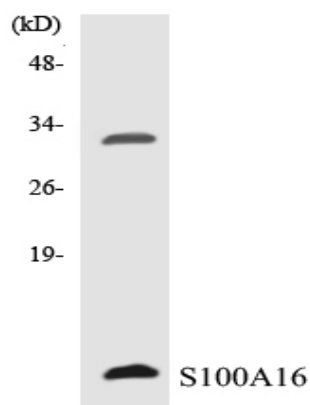
Immunohistochemical analysis of paraffin-embedded Human brain. Antibody was diluted at 1:100(4° overnight). High-pressure and temperature Tris-EDTA,pH8.0 was used for antigen retrieval. Negative contrl (right) obtaned from antibody was pre-absorbed by immunogen peptide.



Immunohistochemical analysis of paraffin-embedded Human cervix cancer. Antibody was diluted at 1:100(4° overnight). High-pressure and temperature Tris-EDTA,pH8.0 was used for antigen retrieval. Negative contrl (right) obtaned from antibody was pre-absorbed by immunogen peptide.



Western blot analysis of lysates from NIH/3T3 and RAW264.7 cells, using S100A16 Antibody. The lane on the right is blocked with the synthesized peptide.



Western blot analysis of the lysates from RAW264.7 cells using S100A16 antibody.