

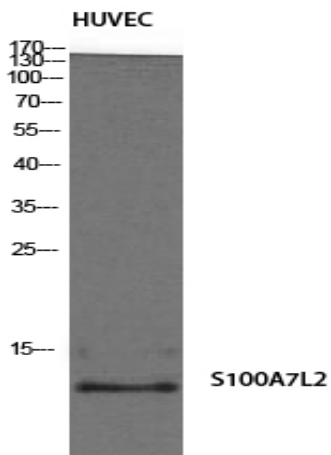
S-100A7L2 Polyclonal Antibody

Catalog No :	YT4202
Reactivity :	Human
Applications :	WB;ELISA
Target :	S-100A7L2
Gene Name :	S100A7L2
Protein Name :	Protein S100-A7-like 2
Human Gene Id :	645922
Human Swiss Prot No :	Q5SY68
Immunogen :	The antiserum was produced against synthesized peptide derived from human S100A7L2. AA range:38-87
Specificity :	S-100A7L2 Polyclonal Antibody detects endogenous levels of S-100A7L2 protein.
Formulation :	Liquid in PBS containing 50% glycerol, 0.5% BSA and 0.02% sodium azide.
Source :	Polyclonal, Rabbit,IgG
Dilution :	WB 1:500 - 1:2000. ELISA: 1:10000. Not yet tested in other applications.
Purification :	The antibody was affinity-purified from rabbit antiserum by affinity-chromatography using epitope-specific immunogen.
Concentration :	1 mg/ml
Storage Stability :	-15°C to -25°C/1 year(Do not lower than -25°C)
Observed Band :	11kD
Background :	similarity:Belongs to the S-100 family.,similarity:Contains 2 EF-hand domains.,

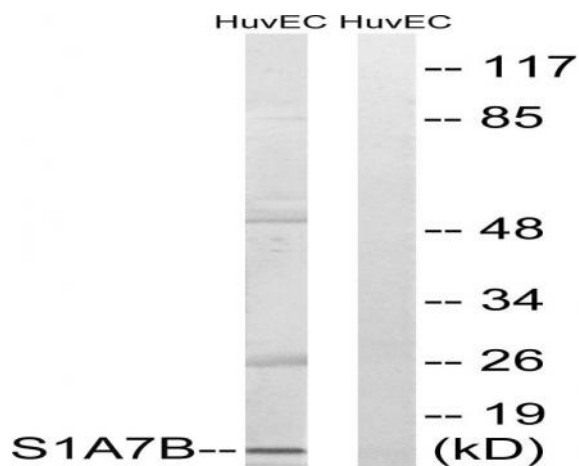
Function :

similarity:Belongs to the S-100 family.,similarity:Contains 2 EF-hand domains.,

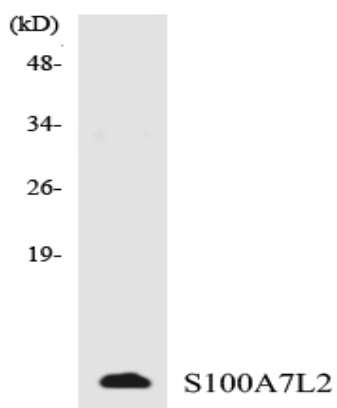
Products Images



Western Blot analysis of HuvEc cells using S-100A7L2 Polyclonal Antibody



Western blot analysis of lysates from HUVEC cells, using S100A7L2 Antibody. The lane on the right is blocked with the synthesized peptide.



Western blot analysis of the lysates from HepG2 cells using S100A7L2 antibody.