

## SAPAP1 Polyclonal Antibody

<b>Catalog No :</b>	YT4212
<b>Reactivity :</b>	Human;Mouse;Rat
<b>Applications :</b>	WB;IHC;IF;ELISA
<b>Target :</b>	SAPAP1
<b>Fields :</b>	>>Glutamatergic synapse
<b>Gene Name :</b>	DLGAP1
<b>Protein Name :</b>	Disks large-associated protein 1
<b>Human Gene Id :</b>	9229
<b>Human Swiss Prot No :</b>	O14490
<b>Mouse Gene Id :</b>	224997
<b>Mouse Swiss Prot No :</b>	Q9D415
<b>Rat Gene Id :</b>	65040
<b>Rat Swiss Prot No :</b>	P97836
<b>Immunogen :</b>	The antiserum was produced against synthesized peptide derived from human DLGP1. AA range:791-840
<b>Specificity :</b>	SAPAP1 Polyclonal Antibody detects endogenous levels of SAPAP1 protein.
<b>Formulation :</b>	Liquid in PBS containing 50% glycerol, 0.5% BSA and 0.02% sodium azide.
<b>Source :</b>	Polyclonal, Rabbit,IgG
<b>Dilution :</b>	WB 1:500 - 1:2000. IHC 1:100 - 1:300. IF 1:200 - 1:1000. ELISA: 1:40000. Not yet tested in other applications.

**Purification :** The antibody was affinity-purified from rabbit antiserum by affinity-chromatography using epitope-specific immunogen.

**Concentration :** 1 mg/ml

**Storage Stability :** -15°C to -25°C/1 year(Do not lower than -25°C)

**Observed Band :** 108kD

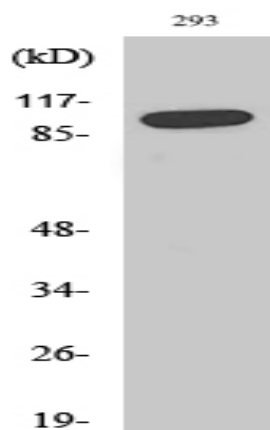
**Background :** function:Part of the postsynaptic scaffold in neuronal cells.,similarity:Belongs to the SAPAP family.,subcellular location:Found in postsynaptic density of neuronal cells.,subunit:Interacts with guanylate kinase-like domain of DLG1, DLG2, DLG3, DLG4 and AIP1. Interacts with the PDZ domain of SHANK1, SHANK2 and SHANK3. Found in a complex with DLG4 and SHANK1, SHANK2 or SHANK3. Found in a complex with DLG4 and BEGAIN. Interacts with DYL2 and LRFN1.,tissue specificity:Expressed in brain.,

**Function :** function:Part of the postsynaptic scaffold in neuronal cells.,similarity:Belongs to the SAPAP family.,subcellular location:Found in postsynaptic density of neuronal cells.,subunit:Interacts with guanylate kinase-like domain of DLG1, DLG2, DLG3, DLG4 and AIP1. Interacts with the PDZ domain of SHANK1, SHANK2 and SHANK3. Found in a complex with DLG4 and SHANK1, SHANK2 or SHANK3. Found in a complex with DLG4 and BEGAIN. Interacts with DYL2 and LRFN1.,tissue specificity:Expressed in brain.,

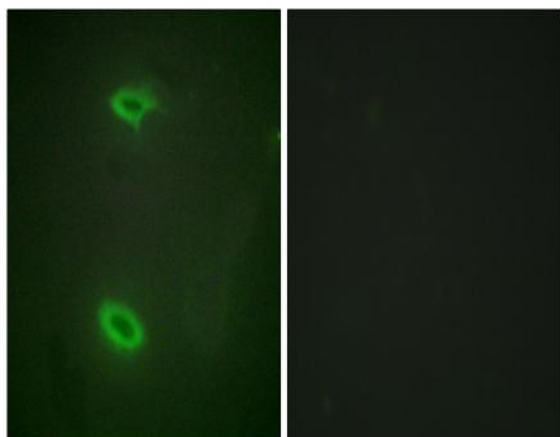
**Subcellular Location :** Cell membrane ; Peripheral membrane protein . Cell junction, synapse, postsynaptic density . Cell junction, synapse .

**Expression :** Expressed in brain.

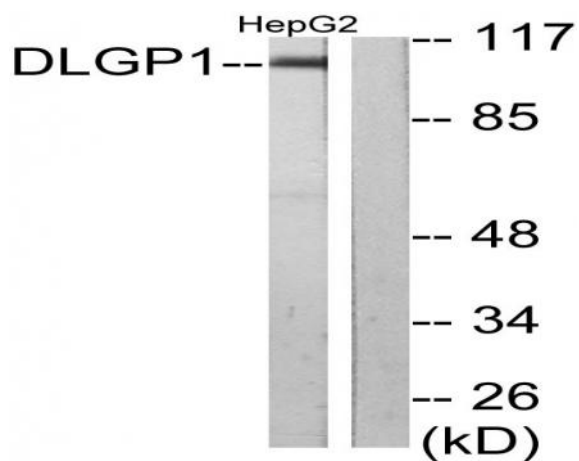
## Products Images



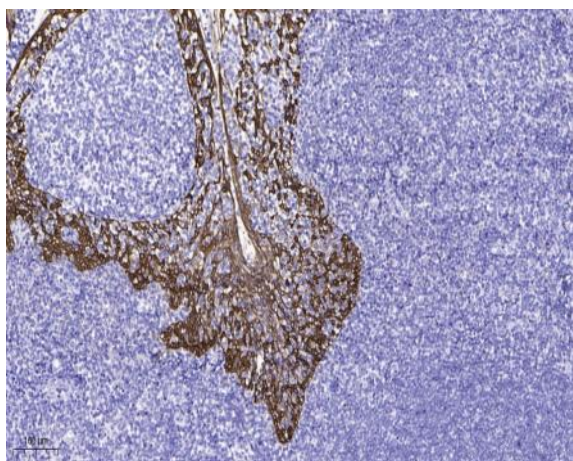
Western Blot analysis of various cells using SAPAP1 Polyclonal Antibody



Immunofluorescence analysis of HeLa cells, using DLGP1 Antibody. The picture on the right is blocked with the synthesized peptide.



Western blot analysis of lysates from HepG2 cells, using DLGP1 Antibody. The lane on the right is blocked with the synthesized peptide.



Immunohistochemical analysis of paraffin-embedded human tonsil. 1, Antibody was diluted at 1:200(4° overnight). 2, Tris-EDTA,pH9.0 was used for antigen retrieval. 3,Secondary antibody was diluted at 1:200(room temperature, 45min).