

Stonin-1 Polyclonal Antibody

Catalog No :	YT4463
Reactivity :	Human;Rat;Mouse;
Applications :	WB;IHC;IF;ELISA
Target :	Stonin-1
Gene Name :	STON1
Protein Name :	Stonin-1
Human Gene Id :	11037
Human Swiss Prot No :	Q9Y6Q2
Mouse Swiss Prot No :	Q8CDJ8
Immunogen :	The antiserum was produced against synthesized peptide derived from human STON1. AA range:686-735
Specificity :	Stonin-1 Polyclonal Antibody detects endogenous levels of Stonin-1 protein.
Formulation :	Liquid in PBS containing 50% glycerol, 0.5% BSA and 0.02% sodium azide.
Source :	Polyclonal, Rabbit,IgG
Dilution :	WB 1:500 - 1:2000. IHC 1:100 - 1:300. IF 1:200 - 1:1000. ELISA: 1:10000. Not yet tested in other applications.
Purification :	The antibody was affinity-purified from rabbit antiserum by affinity-chromatography using epitope-specific immunogen.
Concentration :	1 mg/ml
Storage Stability :	-15°C to -25°C/1 year(Do not lower than -25°C)
Observed Band :	83kD

Cell Pathway : Basal transcription factors;

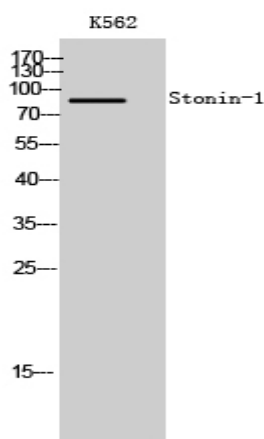
Background : stonin 1 (STON1) Homo sapiens Endocytosis of cell surface proteins is mediated by a complex molecular machinery that assembles on the inner surface of the plasma membrane. This gene encodes one of two human homologs of the *Drosophila melanogaster* stoned B protein. This protein is related to components of the endocytic machinery and exhibits a modular structure consisting of an N-terminal proline-rich domain, a central region of homology specific to the human stoned B-like proteins, and a C-terminal region homologous to the mu subunits of adaptor protein (AP) complexes. Read-through transcription of this gene into the neighboring downstream gene, which encodes TFIIA-alpha/beta-like factor, generates a transcript (SALF), which encodes a fusion protein comprised of sequence sharing identity with each individual gene product. Alternative splicing results in multiple transcript variants. [provided by RefSeq, Oct 2010],

Function : caution:The sequence shown here is derived from an Ensembl automatic analysis pipeline and should be considered as preliminary data.,function:May be involved in the endocytic machinery.,function:May function as a testis specific transcription factor. Binds DNA in conjunction with GTF2A2 and TBP (the TATA-binding protein) and together with GTF2A2, allows mRNA transcription.,miscellaneous:In contrast to other members of the family, it does not contain NPF (Asn-Pro-Phe) sites and thereby does not interact with EPS15, EPS15R and ITSN1.,sequence caution:Chimeric cDNA. The biological existence and relevance of this product of both SALF (AC Q9Y6Q2) and GTF2A1LF genes, creating a chimeric protein of 1182 residues is uncertain.,sequence caution:Chimeric cDNA. The biological existence and relevance of this product of both SALF and GTF2A1LF (AC Q9UNN4) genes, which codes for a chimeric protein of 1

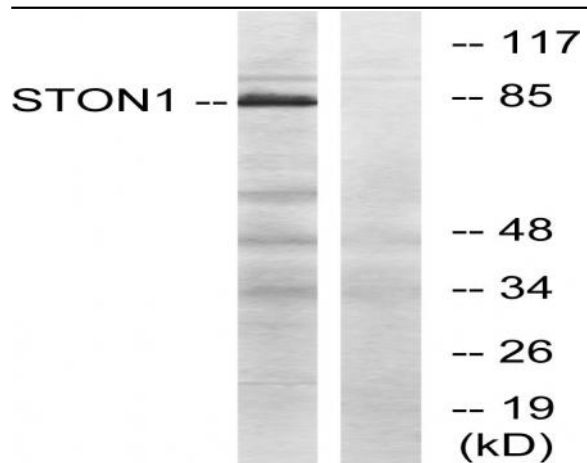
Subcellular Location : Cytoplasm . Membrane . Some fraction is membrane-associated.

Expression : Ubiquitous.

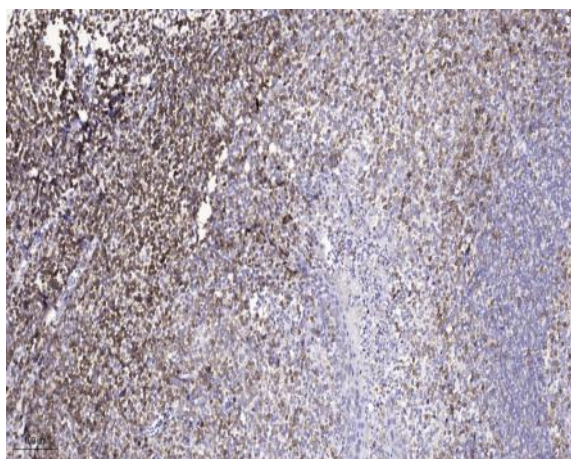
Products Images



Western Blot analysis of K562 cells using Stonin-1 Polyclonal Antibody



Western blot analysis of lysates from K562 cells, using STON1 Antibody. The lane on the right is blocked with the synthesized peptide.



Immunohistochemical analysis of paraffin-embedded human tonsil. 1, Tris-EDTA, pH 9.0 was used for antigen retrieval. 2 Antibody was diluted at 1:200 (4° overnight). 3, Secondary antibody was diluted at 1:200 (room temperature, 45min).