

## MMP-3 Polyclonal Antibody

<b>Catalog No :</b>	YT4465
<b>Reactivity :</b>	Human;Mouse;Rat
<b>Applications :</b>	WB;IHC;IF;ELISA
<b>Target :</b>	MMP-3
<b>Fields :</b>	>>IL-17 signaling pathway;>>TNF signaling pathway;>>Coronavirus disease - COVID-19;>>Transcriptional misregulation in cancer;>>Prostate cancer;>>Rheumatoid arthritis;>>Lipid and atherosclerosis
<b>Gene Name :</b>	MMP3
<b>Protein Name :</b>	Stromelysin-1
<b>Human Gene Id :</b>	4314
<b>Human Swiss Prot No :</b>	P08254
<b>Mouse Gene Id :</b>	17392
<b>Mouse Swiss Prot No :</b>	P28862
<b>Rat Swiss Prot No :</b>	P03957
<b>Immunogen :</b>	The antiserum was produced against synthesized peptide derived from human MMP-3. AA range:421-470
<b>Specificity :</b>	MMP-3 Polyclonal Antibody detects endogenous levels of MMP-3 protein.
<b>Formulation :</b>	Liquid in PBS containing 50% glycerol, 0.5% BSA and 0.02% sodium azide.
<b>Source :</b>	Polyclonal, Rabbit,IgG
<b>Dilution :</b>	WB 1:500 - 1:2000. IHC 1:100 - 1:300. IF 1:200 - 1:1000. ELISA: 1:10000. Not yet tested in other applications.

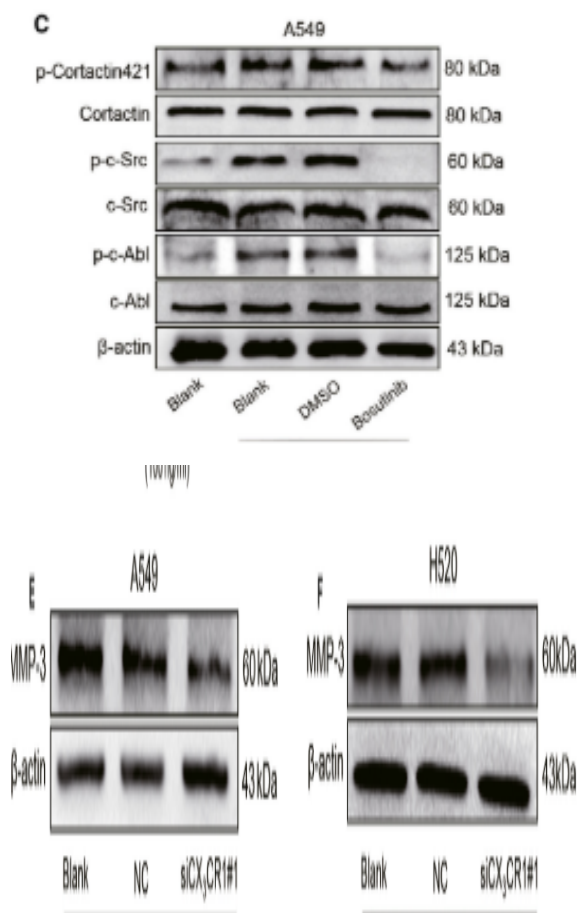
---

<b>Purification :</b>	The antibody was affinity-purified from rabbit antiserum by affinity-chromatography using epitope-specific immunogen.
<b>Concentration :</b>	1 mg/ml
<b>Storage Stability :</b>	-15°C to -25°C/1 year(Do not lower than -25°C)
<b>Observed Band :</b>	53kD
<b>Cell Pathway :</b>	Angiogenesis
<b>Background :</b>	matrix metalloproteinase 3(MMP3) Homo sapiens Proteins of the matrix metalloproteinase (MMP) family are involved in the breakdown of extracellular matrix in normal physiological processes, such as embryonic development, reproduction, and tissue remodeling, as well as in disease processes, such as arthritis and metastasis. Most MMP's are secreted as inactive proproteins which are activated when cleaved by extracellular proteinases. This gene encodes an enzyme which degrades fibronectin, laminin, collagens III, IV, IX, and X, and cartilage proteoglycans. The enzyme is thought to be involved in wound repair, progression of atherosclerosis, and tumor initiation. The gene is part of a cluster of MMP genes which localize to chromosome 11q22.3. [provided by RefSeq, Jul 2008],
<b>Function :</b>	catalytic activity:Preferential cleavage where P1', P2' and P3' are hydrophobic residues.,cofactor:Binds 2 zinc ions per subunit.,cofactor:Binds 4 calcium ions per subunit.,domain:The conserved cysteine present in the cysteine-switch motif binds the catalytic zinc ion, thus inhibiting the enzyme. The dissociation of the cysteine from the zinc ion upon the activation-peptide release activates the enzyme.,function:Can degrade fibronectin, laminin, gelatins of type I, III, IV, and V; collagens III, IV, X, and IX, and cartilage proteoglycans. Activates procollagenase.,similarity:Belongs to the peptidase M10A family.,similarity:Contains 4 hemopexin-like domains.,
<b>Subcellular Location :</b>	Secreted, extracellular space, extracellular matrix .
<b>Expression :</b>	Fibroblast,Lung,Synovium,

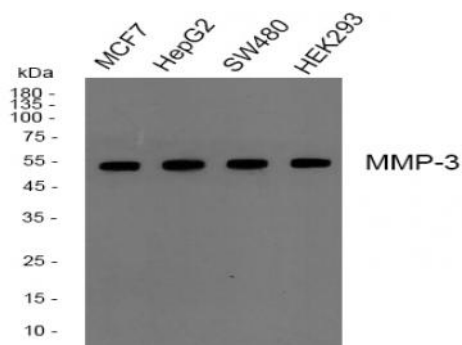
---

## Products Images

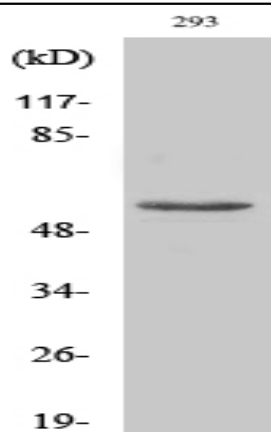
Fan, Mengtian, et al. "CX3CL1 promotes tumour cell by inducing tyrosine phosphorylation of cortactin in lung cancer." *Journal of Cellular and Molecular Medicine* 25.1 (2021): 132-146.



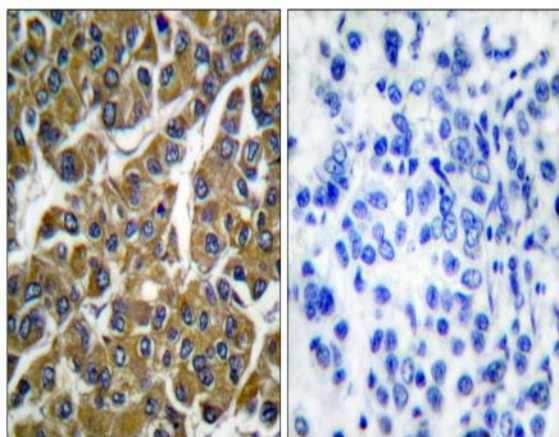
Fan, Mengtian, et al. "CX3CL1 promotes tumour cell by inducing tyrosine phosphorylation of cortactin in lung cancer." *Journal of Cellular and Molecular Medicine* 25.1 (2021): 132-146.



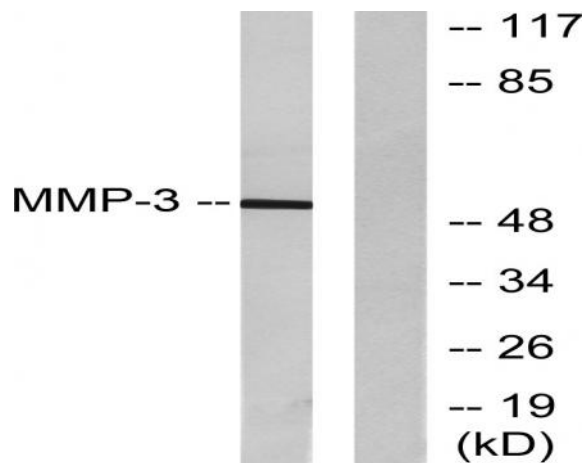
Western blot analysis of MMP-3 Polyclonal Antibody, using HepG2, MCF7, SW480, HEK293 cell, 4° over night, secondary antibody (cat: RS0002) was diluted at 1:10000, 37° 1 hour.



Western Blot analysis of 293 cells using MMP-3 Polyclonal Antibody diluted at 1:2000



Immunohistochemistry analysis of paraffin-embedded human breast carcinoma tissue, using MMP-3 Antibody. The picture on the right is blocked with the synthesized peptide.



Western blot analysis of lysates from 293 cells, using MMP-3 Antibody. The lane on the right is blocked with the synthesized peptide.