

## Sds22 Polyclonal Antibody

<b>Catalog No :</b>	YT4227
<b>Reactivity :</b>	Human;Rat;Mouse;
<b>Applications :</b>	WB;ELISA;IHC
<b>Target :</b>	Sds22
<b>Gene Name :</b>	PPP1R7
<b>Protein Name :</b>	Protein phosphatase 1 regulatory subunit 7
<b>Human Gene Id :</b>	5510
<b>Human Swiss Prot No :</b>	Q15435
<b>Mouse Swiss Prot No :</b>	Q3UM45
<b>Immunogen :</b>	The antiserum was produced against synthesized peptide derived from human PPP1R7. AA range:136-185
<b>Specificity :</b>	Sds22 Polyclonal Antibody detects endogenous levels of Sds22 protein.
<b>Formulation :</b>	Liquid in PBS containing 50% glycerol, 0.5% BSA and 0.02% sodium azide.
<b>Source :</b>	Polyclonal, Rabbit,IgG
<b>Dilution :</b>	WB 1:500-2000;IHC 1:50-300; ELISA 2000-20000
<b>Purification :</b>	The antibody was affinity-purified from rabbit antiserum by affinity-chromatography using epitope-specific immunogen.
<b>Concentration :</b>	1 mg/ml
<b>Storage Stability :</b>	-15°C to -25°C/1 year(Do not lower than -25°C)
<b>Observed Band :</b>	48kD

**Background :**

This gene encodes a protein subunit that regulates the activity of the serine/threonine phosphatase, protein phosphatase-1. The encoded protein is required for completion of the mitotic cycle and for targeting protein phosphatase-1 to mitotic kinetochores. Alternate splicing results in multiple transcript variants. [provided by RefSeq, Sep 2013],

**Function :**

function:Regulatory subunit of protein phosphatase 1.,similarity:Belongs to the SDS22 family.,similarity:Contains 10 LRR (leucine-rich) repeats.,subunit:Interacts with PPP1CA, PPP1CB and PPP1CC/PPP1G isoform 1.,tissue specificity:Widely expressed.,

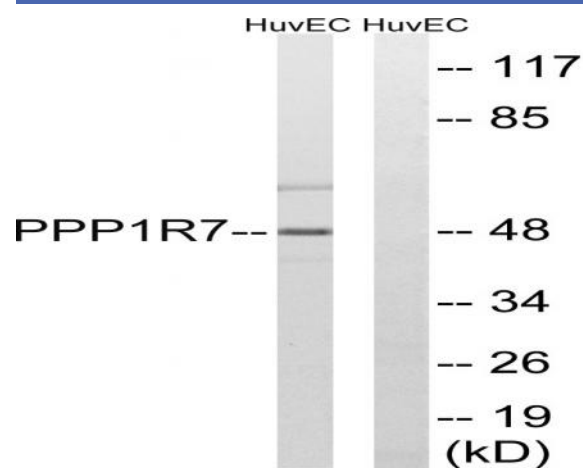
**Subcellular Location :**

Nucleus .

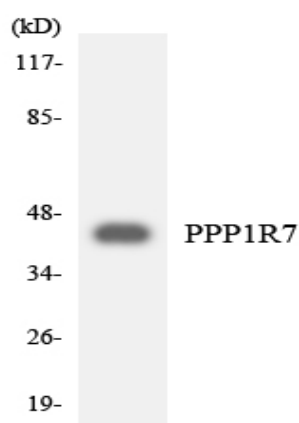
**Expression :**

Widely expressed.

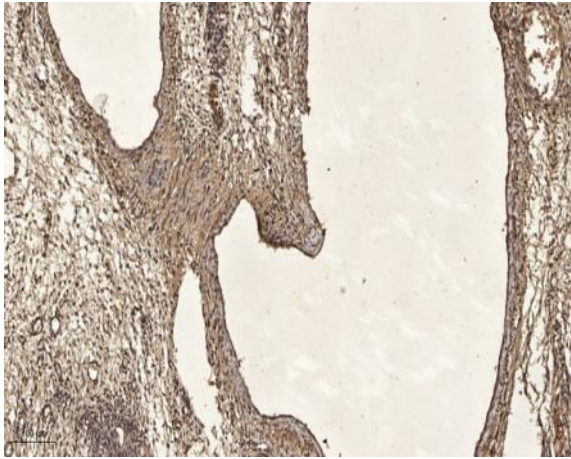
## Products Images



Western blot analysis of lysates from HUVEC cells, using PPP1R7 Antibody. The lane on the right is blocked with the synthesized peptide.



Western blot analysis of the lysates from 293 cells using PPP1R7 antibody.



Immunohistochemical analysis of paraffin-embedded human oophoroma. 1, Antibody was diluted at 1:200(4° overnight). 2, Tris-EDTA,pH9.0 was used for antigen retrieval. 3,Secondary antibody was diluted at 1:200(room temperature, 45min).