

**SERGEF Polyclonal Antibody**

<b>Catalog No :</b>	YT4254
<b>Reactivity :</b>	Human;Mouse
<b>Applications :</b>	WB;ELISA;IHC
<b>Target :</b>	SERGEF
<b>Gene Name :</b>	SERGEF
<b>Protein Name :</b>	Secretion-regulating guanine nucleotide exchange factor
<b>Human Gene Id :</b>	26297
<b>Human Swiss Prot No :</b>	Q9UGK8
<b>Mouse Swiss Prot No :</b>	Q80YD6
<b>Immunogen :</b>	The antiserum was produced against synthesized peptide derived from human SERGEF. AA range:179-228
<b>Specificity :</b>	SERGEF Polyclonal Antibody detects endogenous levels of SERGEF protein.
<b>Formulation :</b>	Liquid in PBS containing 50% glycerol, 0.5% BSA and 0.02% sodium azide.
<b>Source :</b>	Polyclonal, Rabbit,IgG
<b>Dilution :</b>	WB 1:500-2000;IHC 1:50-300; ELISA 2000-20000
<b>Purification :</b>	The antibody was affinity-purified from rabbit antiserum by affinity-chromatography using epitope-specific immunogen.
<b>Concentration :</b>	1 mg/ml
<b>Storage Stability :</b>	-15°C to -25°C/1 year(Do not lower than -25°C)
<b>Observed Band :</b>	50kD

**Cell Pathway :** Regulation of Actin Dynamics; AMPK

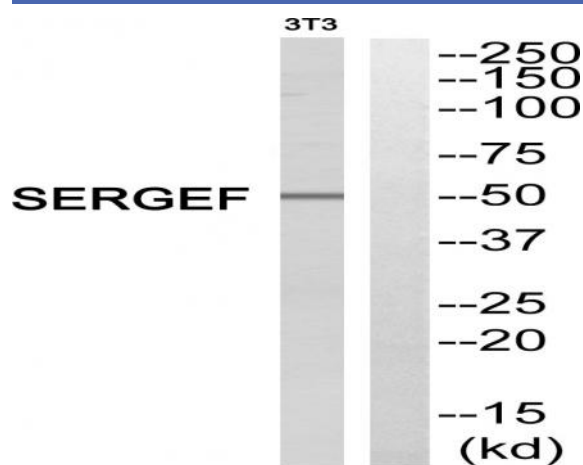
**Background :** function:Probable guanine nucleotide exchange factor (GEF), which may be involved in the secretion process.,PTM:Phosphorylated upon DNA damage, probably by ATM or ATR.,similarity:Contains 7 RCC1 repeats.,subunit:Interacts with SEC5. The interaction occurs only in the presence of magnesium or manganese and is stimulated by dCTP or GTP.,

**Function :** function:Probable guanine nucleotide exchange factor (GEF), which may be involved in the secretion process.,PTM:Phosphorylated upon DNA damage, probably by ATM or ATR.,similarity:Contains 7 RCC1 repeats.,subunit:Interacts with SEC5. The interaction occurs only in the presence of magnesium or manganese and is stimulated by dCTP or GTP.,

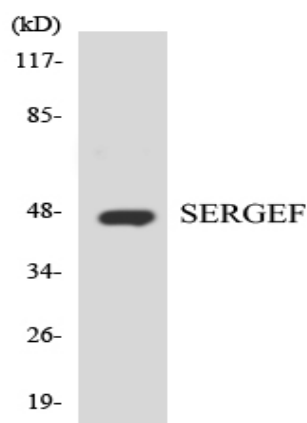
**Subcellular Location :** Cytoplasm . Nucleus .

**Expression :** Fetal brain,Ovary,

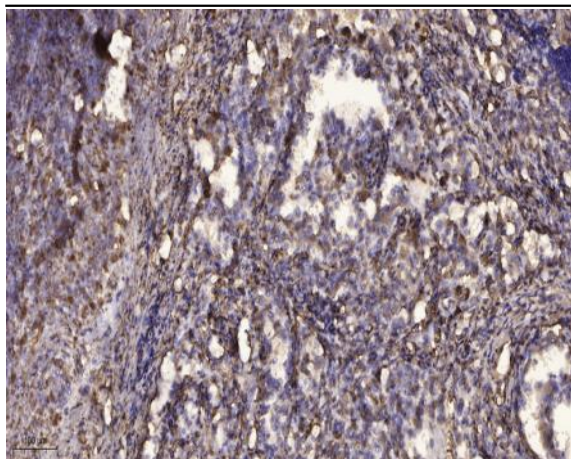
## Products Images



Western blot analysis of SERGEF Antibody. The lane on the right is blocked with the SERGEF peptide.



Western blot analysis of the lysates from HT-29 cells using SERGEF antibody.



Immunohistochemical analysis of paraffin-embedded human Squamous cell carcinoma of lung. 1, Antibody was diluted at 1:200(4° overnight). 2, Tris-EDTA,pH9.0 was used for antigen retrieval. 3,Secondary antibody was diluted at 1:200(room temperature, 45min).