

## Serpin B12 Polyclonal Antibody

<b>Catalog No :</b>	YT4258
<b>Reactivity :</b>	Human;Mouse
<b>Applications :</b>	WB;IHC
<b>Target :</b>	Serpin B12
<b>Gene Name :</b>	SERPINB12
<b>Protein Name :</b>	Serpin B12
<b>Human Gene Id :</b>	89777
<b>Human Swiss Prot No :</b>	Q96P63
<b>Mouse Swiss Prot No :</b>	Q9D7P9
<b>Immunogen :</b>	The antiserum was produced against synthesized peptide derived from human SERPINB12. AA range:241-290
<b>Specificity :</b>	Serpin B12 Polyclonal Antibody detects endogenous levels of Serpin B12 protein.
<b>Formulation :</b>	Liquid in PBS containing 50% glycerol, 0.5% BSA and 0.02% sodium azide.
<b>Source :</b>	Polyclonal, Rabbit,IgG
<b>Dilution :</b>	WB 1:500-2000;IHC 1:50-300
<b>Purification :</b>	The antibody was affinity-purified from rabbit antiserum by affinity-chromatography using epitope-specific immunogen.
<b>Concentration :</b>	1 mg/ml
<b>Storage Stability :</b>	-15°C to -25°C/1 year(Do not lower than -25°C)
<b>Observed Band :</b>	47kD

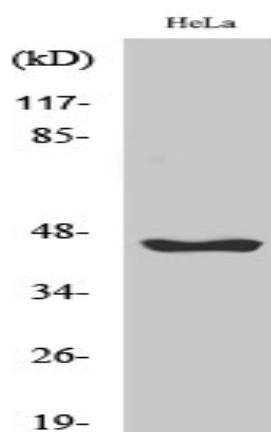
**Background :** function:Inhibits trypsin and plasmin, but not thrombin, coagulation factor Xa, or urokinase-type plasminogen activator.,similarity:Belongs to the serpin family.,similarity:Belongs to the serpin family. Ov-serpin subfamily.,tissue specificity:Expressed in many tissues, including brain, bone marrow, lymph node, heart, lung, liver, pancreas, testis, ovary, and intestine.,

**Function :** function:Inhibits trypsin and plasmin, but not thrombin, coagulation factor Xa, or urokinase-type plasminogen activator.,similarity:Belongs to the serpin family.,similarity:Belongs to the serpin family. Ov-serpin subfamily.,tissue specificity:Expressed in many tissues, including brain, bone marrow, lymph node, heart, lung, liver, pancreas, testis, ovary, and intestine.,

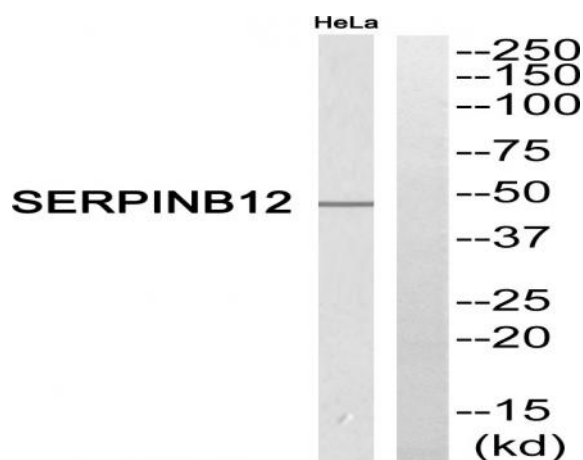
**Subcellular Location :** Cytoplasm .

**Expression :** Expressed in many tissues, including brain, bone marrow, lymph node, heart, lung, liver, pancreas, testis, ovary, and intestine.

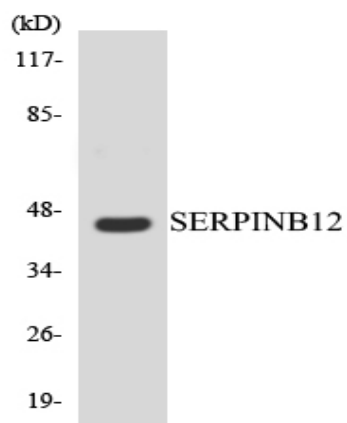
## Products Images



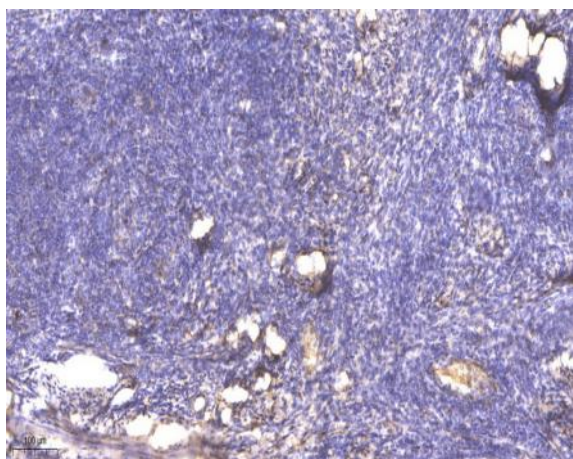
Western Blot analysis of various cells using Serpin B12 Polyclonal Antibody



Western blot analysis of SERPINB12 Antibody. The lane on the right is blocked with the SERPINB12 peptide.



Western blot analysis of the lysates from HeLa cells using SERPINB12 antibody.



Immunohistochemical analysis of paraffin-embedded human cervical carcinoma. 1, Antibody was diluted at 1:200(4° overnight). 2, Tris-EDTA,pH9.0 was used for antigen retrieval. 3,Secondary antibody was diluted at 1:200(room temperature, 45min).