

SerpinA6 Polyclonal Antibody

Catalog No :	YT4259
Reactivity :	Human;Rat;Mouse;
Applications :	IHC;IF;ELISA
Target :	SerpinA6
Gene Name :	SERPINA6
Protein Name :	Corticosteroid-binding globulin
Human Gene Id :	866
Human Swiss Prot No :	P08185
Mouse Swiss Prot No :	Q06770
Immunogen :	Synthesized peptide derived from the Internal region of human SerpinA6.
Specificity :	SerpinA6 Polyclonal Antibody detects endogenous levels of SerpinA6 protein.
Formulation :	Liquid in PBS containing 50% glycerol, 0.5% BSA and 0.02% sodium azide.
Source :	Polyclonal, Rabbit,IgG
Dilution :	IHC 1:100 - 1:300. ELISA: 1:5000.. IF 1:50-200
Purification :	The antibody was affinity-purified from rabbit antiserum by affinity-chromatography using epitope-specific immunogen.
Concentration :	1 mg/ml
Storage Stability :	-15°C to -25°C/1 year(Do not lower than -25°C)
Molecularweight :	45kD

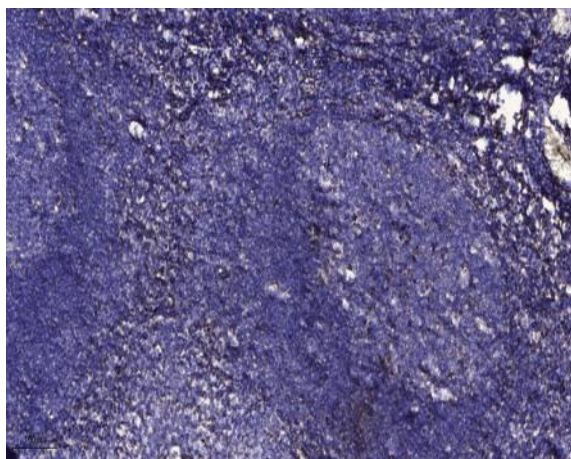
Background : This gene encodes an alpha-globulin protein with corticosteroid-binding properties. This is the major transport protein for glucocorticoids and progestins in the blood of most vertebrates. The gene localizes to a chromosomal region containing several closely related serine protease inhibitors which may have evolved by duplication events. [provided by RefSeq, Jul 2008],

Function : disease:Defects in SERPINA6 are a cause of corticosteroid-binding globulin deficiency (CBG deficiency) [MIM:611489]. CBG deficiency is an extremely rare hereditary disorder characterized by reduced corticosteroid-binding capacity with normal or low plasma corticosteroid-binding globulin concentration, and normal or low basal cortisol levels associated with hypo/hypertension and muscle fatigue.,function:Major transport protein for glucocorticoids and progestins in the blood of almost all vertebrate species.,online information:Transcortin entry,PTM:Glycosylation in position Asn-260 is needed for steroid binding.,PTM:N-glycosylated; binds 5 oligosaccharide chains.,similarity:Belongs to the serpin family.,tissue specificity:Plasma; synthesized in liver. Has also been identified in a number of glycocorticoid responsive cells.,

Subcellular Location : Secreted.

Expression : Plasma; synthesized in liver. Has also been identified in a number of glycocorticoid responsive cells.

Products Images



Immunohistochemical analysis of paraffin-embedded human tonsil. 1, Antibody was diluted at 1:200(4° overnight). 2, Tris-EDTA,pH9.0 was used for antigen retrieval. 3,Secondary antibody was diluted at 1:200(room temperature, 30min).