

## T2R43 Polyclonal Antibody

<b>Catalog No :</b>	YT4510
<b>Reactivity :</b>	Human;Rat;Mouse;
<b>Applications :</b>	WB;ELISA
<b>Target :</b>	T2R43
<b>Fields :</b>	>>Taste transduction
<b>Gene Name :</b>	TAS2R43
<b>Protein Name :</b>	Taste receptor type 2 member 43
<b>Human Gene Id :</b>	259289
<b>Human Swiss Prot No :</b>	P59537
<b>Immunogen :</b>	The antiserum was produced against synthesized peptide derived from human TAS2R43. AA range:124-173
<b>Specificity :</b>	T2R43 Polyclonal Antibody detects endogenous levels of T2R43 protein.
<b>Formulation :</b>	Liquid in PBS containing 50% glycerol, 0.5% BSA and 0.02% sodium azide.
<b>Source :</b>	Polyclonal, Rabbit,IgG
<b>Dilution :</b>	WB 1:500 - 1:2000. ELISA: 1:20000. Not yet tested in other applications.
<b>Purification :</b>	The antibody was affinity-purified from rabbit antiserum by affinity-chromatography using epitope-specific immunogen.
<b>Concentration :</b>	1 mg/ml
<b>Storage Stability :</b>	-15°C to -25°C/1 year(Do not lower than -25°C)
<b>Observed Band :</b>	35kD

**Cell Pathway :** Taste transduction;

**Background :** TAS2R43 belongs to the large TAS2R receptor family. TAS2Rs are expressed on the surface of taste receptor cells and mediate the perception of bitterness through a G protein-coupled second messenger pathway (Conte et al., 2002 [PubMed 12584440]). For further information on TAS2Rs, see MIM 604791.[supplied by OMIM, Mar 2009],

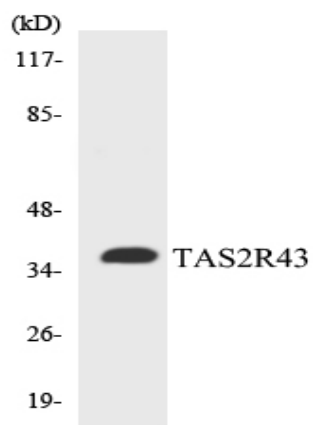
**Function :** function:Receptor that may play a role in the perception of bitterness and is gustducin-linked. May play a role in sensing the chemical composition of the gastrointestinal content. The activity of this receptor may stimulate alpha gustducin, mediate PLC-beta-2 activation and lead to the gating of TRPM5 (By similarity). Activated by the sulfonyl amide sweeteners saccharin and acesulfame K.,miscellaneous:Most taste cells may be activated by a limited number of bitter compounds; individual taste cells can discriminate among bitter stimuli.,similarity:Belongs to the G-protein coupled receptor T2R family.,tissue specificity:Expressed in subsets of taste receptor cells of the tongue and exclusively in gustducin-positive cells.,

**Subcellular Location :** Membrane ; Multi-pass membrane protein . Cell projection, cilium membrane . In airway epithelial cells, localizes to motile cilia.

**Expression :** Expressed in subsets of taste receptor cells of the tongue and exclusively in gustducin-positive cells. Expressed in airway epithelia.

## Products Images





Western blot analysis of the lysates from COLO205 cells using TAS2R43 antibody.