

## SH3BGR Polyclonal Antibody

<b>Catalog No :</b>	YT4279
<b>Reactivity :</b>	Human;Mouse;Rat
<b>Applications :</b>	WB;IHC
<b>Target :</b>	SH3BGR
<b>Gene Name :</b>	SH3BGR
<b>Protein Name :</b>	SH3 domain-binding glutamic acid-rich protein
<b>Human Gene Id :</b>	6450
<b>Human Swiss Prot No :</b>	P55822
<b>Mouse Gene Id :</b>	50795
<b>Mouse Swiss Prot No :</b>	Q9WUZ7
<b>Immunogen :</b>	The antiserum was produced against synthesized peptide derived from human SH3BGR. AA range:81-130
<b>Specificity :</b>	SH3BGR Polyclonal Antibody detects endogenous levels of SH3BGR protein.
<b>Formulation :</b>	Liquid in PBS containing 50% glycerol, 0.5% BSA and 0.02% sodium azide.
<b>Source :</b>	Polyclonal, Rabbit,IgG
<b>Dilution :</b>	WB 1:500-2000;IHC 1:50-300
<b>Purification :</b>	The antibody was affinity-purified from rabbit antiserum by affinity-chromatography using epitope-specific immunogen.
<b>Concentration :</b>	1 mg/ml
<b>Storage Stability :</b>	-15°C to -25°C/1 year(Do not lower than -25°C)

**Observed Band :** 26kD

**Background :** caution:It is uncertain whether Met-1 or Met-64 is the initiator.,similarity:Belongs to the SH3BGR family.,tissue specificity:Expressed in heart and skeletal muscle.,

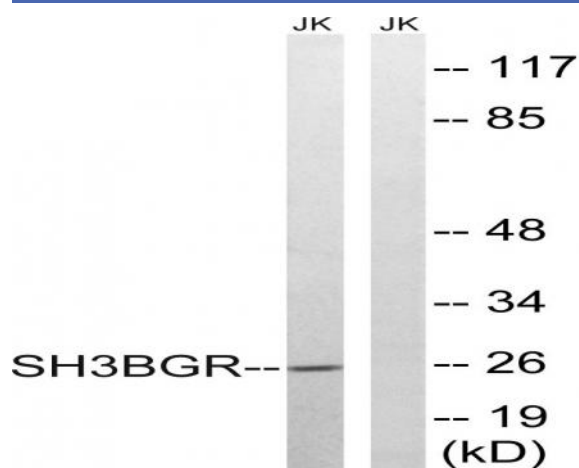
**Function :** caution:It is uncertain whether Met-1 or Met-64 is the initiator.,similarity:Belongs to the SH3BGR family.,tissue specificity:Expressed in heart and skeletal muscle.,

**Subcellular Location :** cytosol,

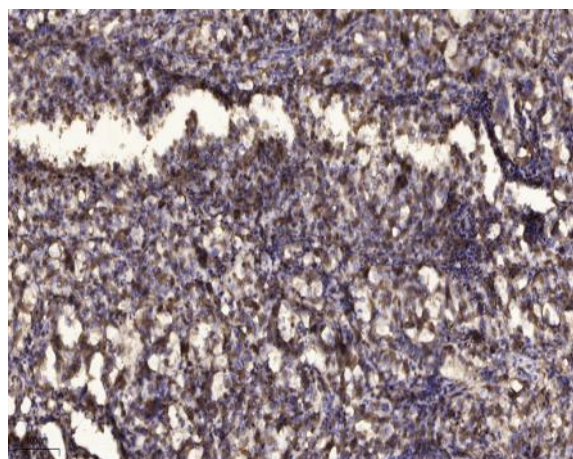
**Location :**

**Expression :** Expressed in heart and skeletal muscle.

## Products Images



Western blot analysis of lysates from Jurkat cells, using SH3BGR Antibody. The lane on the right is blocked with the synthesized peptide.



Immunohistochemical analysis of paraffin-embedded human Squamous cell carcinoma of lung. 1, Antibody was diluted at 1:200(4° overnight). 2, Tris-EDTA,pH9.0 was used for antigen retrieval. 3,Secondary antibody was diluted at 1:200(room temperature, 45min).