

## Shb Polyclonal Antibody

<b>Catalog No :</b>	YT4284
<b>Reactivity :</b>	Human;Mouse
<b>Applications :</b>	WB;ELISA;IHC
<b>Target :</b>	Shb
<b>Gene Name :</b>	SHB
<b>Protein Name :</b>	SH2 domain-containing adapter protein B
<b>Human Gene Id :</b>	6461
<b>Human Swiss Prot No :</b>	Q15464
<b>Mouse Gene Id :</b>	230126
<b>Mouse Swiss Prot No :</b>	Q6PD21
<b>Immunogen :</b>	The antiserum was produced against synthesized peptide derived from human SHB. AA range:411-460
<b>Specificity :</b>	Shb Polyclonal Antibody detects endogenous levels of Shb protein.
<b>Formulation :</b>	Liquid in PBS containing 50% glycerol, 0.5% BSA and 0.02% sodium azide.
<b>Source :</b>	Polyclonal, Rabbit,IgG
<b>Dilution :</b>	WB 1:500-2000;IHC 1:50-300; ELISA 2000-20000
<b>Purification :</b>	The antibody was affinity-purified from rabbit antiserum by affinity-chromatography using epitope-specific immunogen.
<b>Concentration :</b>	1 mg/ml
<b>Storage Stability :</b>	-15°C to -25°C/1 year(Do not lower than -25°C)

**Observed Band :** 55kD

---

**Background :**

domain:The SH2 domain preferentially binds phosphopeptides with the consensus sequence Y-[TVI]-X-L and mediates interaction with PDGFRA, PDGFRB, FGRFR1, IL2RB, IL2RG, CD3Z and CRK/CrKII.,function:Adapter protein which regulates several signal transduction cascades by linking activated receptors to downstream signaling components. May play a role in angiogenesis by regulating FGFR1, VEGFR2 and PDGFR signaling. May also play a role in T-cell antigen receptor/TCR signaling, interleukin-2 signaling, apoptosis and neuronal cells differentiation by mediating basic-FGF and NGF-induced signaling cascades. May also regulate IRS1 and IRS2 signaling in insulin-producing cells.,PTM:Phosphorylated upon PDGFRA, PDGFRB, TCR, IL2 receptor, FGRF1 or VEGFR2 activation.,similarity:Contains 1 SH2 domain.,subcellular location:Associates with membrane lipid rafts upon TCR stimulation.,subunit:Interacts with PTPN11 (By similarity). Interacts with phosphorylated 'Tyr-720' of the ligand-activated receptor PDGFRA via its SH2 domain. Interacts with the ligand-activated receptors PDGFRB, FGFR1, KDR/VEGFR2, IL2RB and IL2RG. Interacts with EPS8 and V-SRC. Interacts with GRB2 and GRAP. Interacts with CD3Z. Interacts with tyrosine-phosphorylated LAT upon T-cell antigen receptor activation. Interacts with PLCG1. Interacts with ZAP70, LCP2/SLP-76, VAV1 and GRAP2. Interacts with JAK1 and JAK3. Interacts with PTK2/FAK1. Interacts with CRK/CrKII. Interacts with IRS2.,tissue specificity:Widely expressed.,

---

**Function :**

domain:The SH2 domain preferentially binds phosphopeptides with the consensus sequence Y-[TVI]-X-L and mediates interaction with PDGFRA, PDGFRB, FGRFR1, IL2RB, IL2RG, CD3Z and CRK/CrKII.,function:Adapter protein which regulates several signal transduction cascades by linking activated receptors to downstream signaling components. May play a role in angiogenesis by regulating FGFR1, VEGFR2 and PDGFR signaling. May also play a role in T-cell antigen receptor/TCR signaling, interleukin-2 signaling, apoptosis and neuronal cells differentiation by mediating basic-FGF and NGF-induced signaling cascades. May also regulate IRS1 and IRS2 signaling in insulin-producing cells.,PTM:Phosphorylated upon PDGFRA, PDGFRB, TCR, IL2 receptor, FGRF1 or VEGFR2 activation.,similarity:Contains 1 SH2 domain.,subcellular location:Associates with membrane lipid rafts upon TCR stimulation.,subunit:Interacts with P

---

**Subcellular Location :**

Cytoplasm. Cell membrane; Peripheral membrane protein; Cytoplasmic side. Associates with membrane lipid rafts upon TCR stimulation.

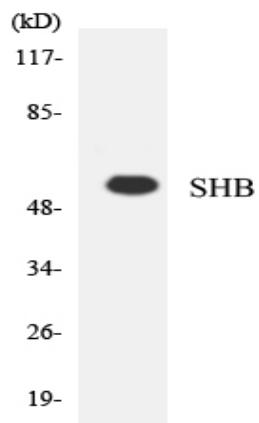
---

**Expression :**

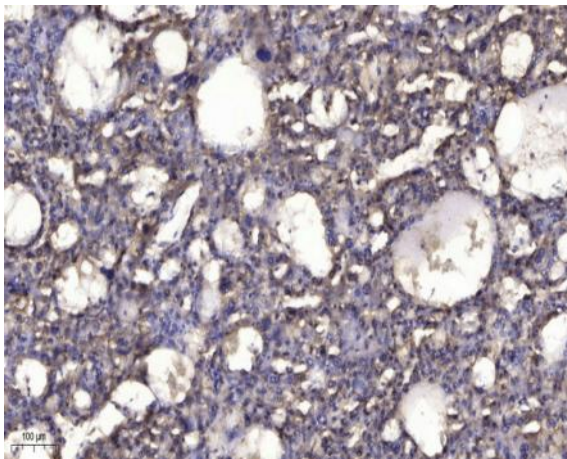
Widely expressed.

---

## Products Images



Western blot analysis of the lysates from HUVEC cells using SHB antibody.



Immunohistochemical analysis of paraffin-embedded human liver cancer. 1, Antibody was diluted at 1:200 (4° overnight). 2, Tris-EDTA, pH 9.0 was used for antigen retrieval. 3, Secondary antibody was diluted at 1:200 (room temperature, 45 min).