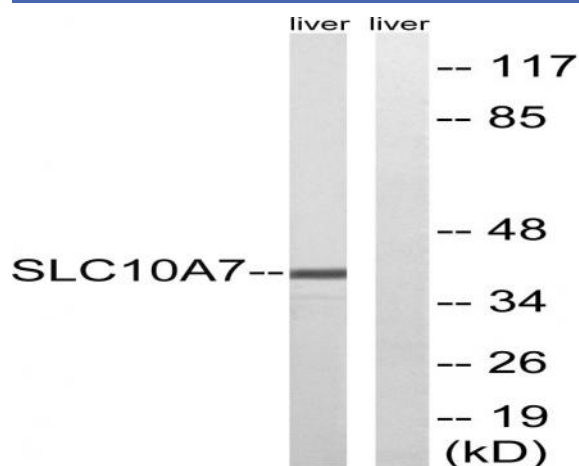


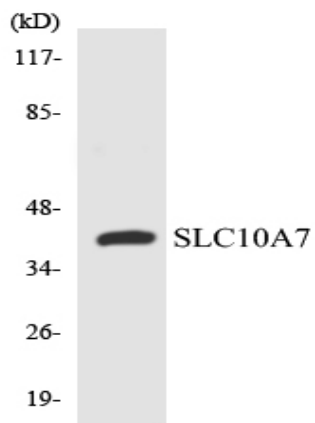
## SLC10A7 Polyclonal Antibody

<b>Catalog No :</b>	YT4313
<b>Reactivity :</b>	Human;Mouse;Rat
<b>Applications :</b>	WB;ELISA;IHC
<b>Target :</b>	SLC10A7
<b>Gene Name :</b>	SLC10A7
<b>Protein Name :</b>	Sodium/bile acid cotransporter 7
<b>Human Gene Id :</b>	84068
<b>Human Swiss Prot No :</b>	Q0GE19
<b>Mouse Gene Id :</b>	76775
<b>Mouse Swiss Prot No :</b>	Q5PT53
<b>Rat Gene Id :</b>	291942
<b>Rat Swiss Prot No :</b>	Q5PT50
<b>Immunogen :</b>	The antiserum was produced against synthesized peptide derived from human SLC10A7. AA range:168-217
<b>Specificity :</b>	SLC10A7 Polyclonal Antibody detects endogenous levels of SLC10A7 protein.
<b>Formulation :</b>	Liquid in PBS containing 50% glycerol, 0.5% BSA and 0.02% sodium azide.
<b>Source :</b>	Polyclonal, Rabbit,IgG
<b>Dilution :</b>	WB 1:500-2000;IHC 1:50-300; ELISA 2000-20000
<b>Purification :</b>	The antibody was affinity-purified from rabbit antiserum by affinity-chromatography using epitope-specific immunogen.

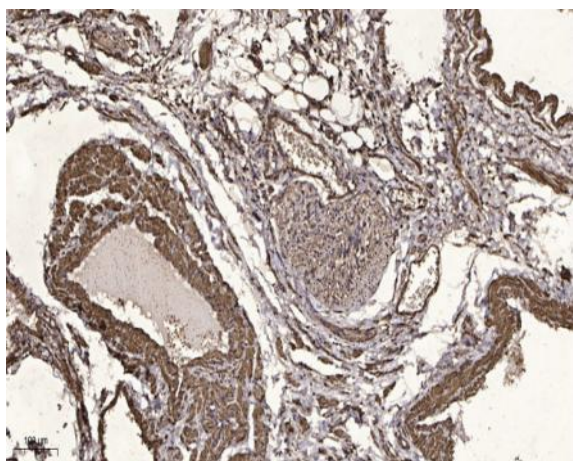
<b>Concentration :</b>	1 mg/ml
<b>Storage Stability :</b>	-15°C to -25°C/1 year(Do not lower than -25°C)
<b>Observed Band :</b>	39kD
<b>Background :</b>	similarity:Belongs to the sodium:bile acid symporter family.,
<b>Function :</b>	similarity:Belongs to the sodium:bile acid symporter family.,
<b>Subcellular Location :</b>	Cell membrane ; Multi-pass membrane protein . Endoplasmic reticulum membrane ; Multi-pass membrane protein . Golgi apparatus membrane .
<b>Expression :</b>	Widely expressed (PubMed:15932064, PubMed:17628207). Expressed at high levels in liver and at lower levels in prostate, placenta, kidney, heart, lung, thymus and spleen (PubMed:15932064, PubMed:17628207). Strongly expressed in testis and also detected in brain, ovary, colon and small intestine (PubMed:17628207). Weakly expressed in testis and not detected in brain, ovary, colon or small intestine (PubMed:15932064). Isoform 1: Expressed in liver, testis and placenta (PubMed:17628207). Isoform 4: Expressed in liver, testis and placenta (PubMed:17628207).

## Products Images





Western blot analysis of the lysates from 293 cells using SLC10A7 antibody.



Immunohistochemical analysis of paraffin-embedded human oophoroma. 1, Antibody was diluted at 1:200(4° overnight). 2, Tris-EDTA,pH9.0 was used for antigen retrieval. 3,Secondary antibody was diluted at 1:200(room temperature, 45min).