

TRAP240 Polyclonal Antibody

Catalog No :	YT4728
Reactivity :	Human;Mouse
Applications :	WB;IHC;IF;ELISA
Target :	TRAP240
Fields :	>>Thyroid hormone signaling pathway
Gene Name :	MED13L
Protein Name :	Mediator of RNA polymerase II transcription subunit 13-like
Human Gene Id :	23389
Human Swiss Prot No :	Q71F56
Mouse Gene Id :	76199
Mouse Swiss Prot No :	Q6JPI3
Immunogen :	The antiserum was produced against synthesized peptide derived from human MED13L. AA range:449-498
Specificity :	TRAP240 Polyclonal Antibody detects endogenous levels of TRAP240 protein.
Formulation :	Liquid in PBS containing 50% glycerol, 0.5% BSA and 0.02% sodium azide.
Source :	Polyclonal, Rabbit,IgG
Dilution :	WB 1:500 - 1:2000. IHC 1:100 - 1:300. ELISA: 1:10000.. IF 1:50-200
Purification :	The antibody was affinity-purified from rabbit antiserum by affinity-chromatography using epitope-specific immunogen.
Concentration :	1 mg/ml

Storage Stability : -15°C to -25°C/1 year (Do not lower than -25°C)

Observed Band : 250kD

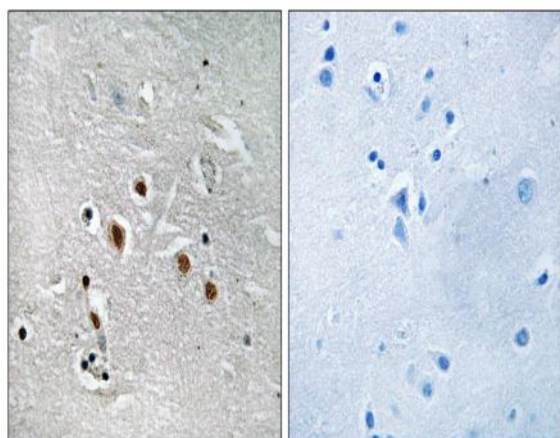
Background : The protein encoded by this gene is a subunit of the Mediator complex, a large complex of proteins that functions as a transcriptional coactivator for most RNA polymerase II-transcribed genes. The encoded protein is involved in early development of the heart and brain. Defects in this gene are a cause of transposition of the great arteries, dextro-looped (DTGA). [provided by RefSeq, Jul 2010],

Function : disease: A chromosomal aberration involving MED13L is found in a patient with transposition of the great arteries, dextro-looped and mental retardation. Translocation t(12;17)(q24.1;q21)., disease: Defects in MED13L are a cause of transposition of the great arteries, dextro-looped (DTGA) [MIM:608808]. DTGA consists of complete inversion of the great vessels, so that the aorta incorrectly arises from the right ventricle and the pulmonary artery incorrectly arises from the left ventricle. This creates completely separate pulmonary and systemic circulatory systems, an arrangement that is incompatible with life. Patients often have atrial and/or ventricular septal defects or other types of shunting that allow some mixing between the circulations in order to support life minimally, but surgical intervention is always required., function: Component of the Mediator complex, a coactivator involved in

Subcellular Location : Nucleus .

Expression : Highly expressed in brain (cerebellum), heart (aorta), skeletal muscle, kidney, placenta and peripheral blood leukocytes. Highly expressed in fetal brain.

Products Images



Immunohistochemistry analysis of paraffin-embedded human brain tissue, using MED13L Antibody. The picture on the right is blocked with the synthesized peptide.