

## Smad6 Polyclonal Antibody

<b>Catalog No :</b>	YT4338
<b>Reactivity :</b>	Human;Mouse
<b>Applications :</b>	WB;IHC;IF;ELISA
<b>Target :</b>	Smad6
<b>Fields :</b>	>>TGF-beta signaling pathway
<b>Gene Name :</b>	SMAD6
<b>Protein Name :</b>	Mothers against decapentaplegic homolog 6
<b>Human Gene Id :</b>	4091
<b>Human Swiss Prot No :</b>	O43541
<b>Mouse Gene Id :</b>	17130
<b>Mouse Swiss Prot No :</b>	O35182
<b>Immunogen :</b>	The antiserum was produced against synthesized peptide derived from human Smad6. AA range:323-372
<b>Specificity :</b>	Smad6 Polyclonal Antibody detects endogenous levels of Smad6 protein.
<b>Formulation :</b>	Liquid in PBS containing 50% glycerol, 0.5% BSA and 0.02% sodium azide.
<b>Source :</b>	Polyclonal, Rabbit,IgG
<b>Dilution :</b>	WB 1:500 - 1:2000. IHC 1:100 - 1:300. ELISA: 1:40000.. IF 1:50-200
<b>Purification :</b>	The antibody was affinity-purified from rabbit antiserum by affinity-chromatography using epitope-specific immunogen.
<b>Concentration :</b>	1 mg/ml

**Storage Stability :** -15°C to -25°C/1 year(Do not lower than -25°C)

**Observed Band :** 62kD

**Cell Pathway :** TGF-beta;

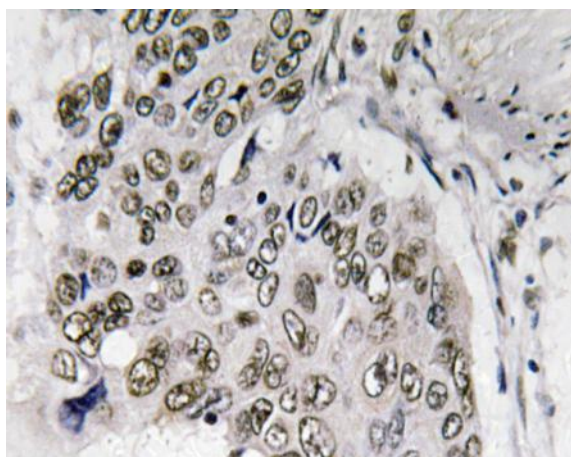
**Background :** The protein encoded by this gene belongs to the SMAD family of proteins, which are related to Drosophila's mothers against decapentaplegic (Mad) and C. elegans Sma. SMAD proteins are signal transducers and transcriptional modulators that mediate multiple signaling pathways. This protein functions in the negative regulation of BMP and TGF-beta/activin-signalling. Multiple transcript variants have been found for this gene.[provided by RefSeq, Sep 2014],

**Function :** function:Antagonist of signaling by TGF-beta (transforming growth factor) type 1 receptor superfamily members; has been shown to inhibit selectively BMP (bone morphogenetic proteins) signaling by competing with the co-SMAD SMAD4 for receptor-activated SMAD1. SMAD6 is an inhibitory SMAD (I-SMAD) or antagonistic SMAD. Binds to regulatory elements in target promoter regions.,PTM:Phosphorylated by BMP type 1 receptor kinase and by PRKX.,similarity:Belongs to the dwarfin/SMAD family.,similarity:Contains 1 MH1 (MAD homology 1) domain.,similarity:Contains 1 MH2 (MAD homology 2) domain.,subunit:Interacts with NEDD4L (By similarity). Interacts with RNF111 and AXIN1. Interacts with TGF-beta type I receptor superfamily members, SMAD1, HOXC8 and HOXC9. Interacts with STAMBP and PRKX.,tissue specificity:Ubiquitous in various organs, with higher levels in lung. Isoform B is up-regulated in diseased he

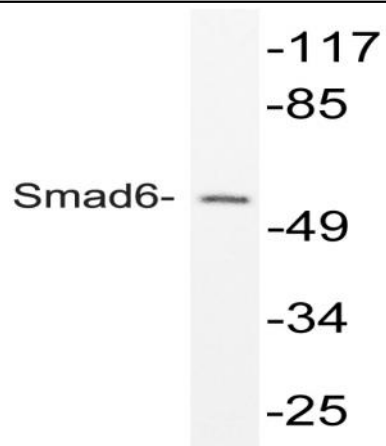
**Subcellular Location :** Nucleus .

**Expression :** Ubiquitous in various organs, with higher levels in lung. Isoform B is up-regulated in diseased heart tissue.

## Products Images



Immunohistochemistry analysis of Smad6 antibody in paraffin-embedded human lung carcinoma tissue.



Western blot analysis of lysate from mouse brain, using Smad6 antibody.