

SNX1 Polyclonal Antibody

Catalog No :	YT4358
Reactivity :	Human;Mouse;Rat
Applications :	WB;ELISA;IHC
Target :	SNX1
Fields :	>>Endocytosis
Gene Name :	SNX1
Protein Name :	Sorting nexin-1
Human Gene Id :	6642
Human Swiss Prot No :	Q13596
Mouse Gene Id :	56440
Mouse Swiss Prot No :	Q9WV80
Rat Gene Id :	84471
Rat Swiss Prot No :	Q99N27
Immunogen :	Synthesized peptide derived from the Internal region of human SNX1.
Specificity :	SNX1 Polyclonal Antibody detects endogenous levels of SNX1 protein.
Formulation :	Liquid in PBS containing 50% glycerol, 0.5% BSA and 0.02% sodium azide.
Source :	Polyclonal, Rabbit,IgG
Dilution :	WB 1:500-2000;IHC 1:50-300; ELISA 2000-20000
Purification :	The antibody was affinity-purified from rabbit antiserum by affinity-

chromatography using epitope-specific immunogen.

Concentration : 1 mg/ml

Storage Stability : -15°C to -25°C/1 year (Do not lower than -25°C)

Observed Band : 60kD

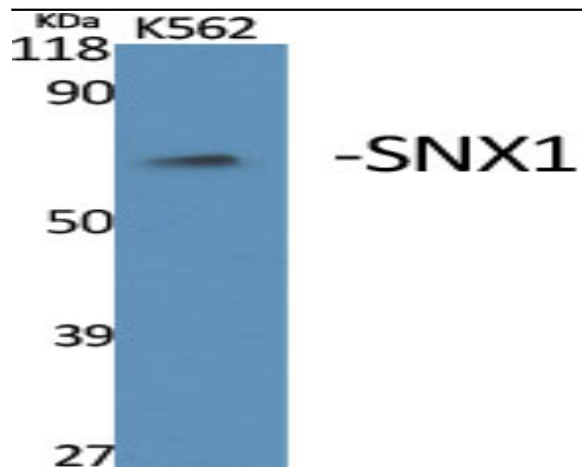
Background : This gene encodes a member of the sorting nexin family. Members of this family contain a phox (PX) domain, which is a phosphoinositide binding domain, and are involved in intracellular trafficking. This endosomal protein regulates the cell-surface expression of epidermal growth factor receptor. This protein also has a role in sorting protease-activated receptor-1 from early endosomes to lysosomes. This protein may form oligomeric complexes with family members. This gene results in three transcript variants encoding distinct isoforms. [provided by RefSeq, Jul 2008],

Function : function: May be involved in several stages of intracellular trafficking. Plays a role in targeting ligand-activated EGFR to the lysosomes for degradation after endocytosis from the cell surface and release from the Golgi. Component of the retromer complex, a complex required to retrieve lysosomal enzyme receptors (IGF2R and M6PR) from endosomes to the trans-Golgi network. Interacts with PtdIns(3,4,5)P3 and, with weaker affinity, with PtdIns(3,5)P2., similarity: Belongs to the sorting nexin family., similarity: Contains 1 PX (phox homology) domain., subunit: Self-assembles into a complex of approximately 300 kDa (By similarity). Interacts with HGS (By similarity). Component of the retromer complex composed of VPS26 (VPS26A or VPS26B), VPS29, VPS35, SNX1 and SNX2.,

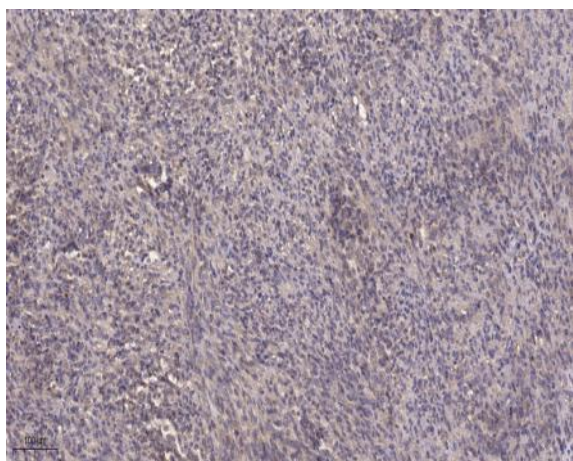
Subcellular Location : Endosome membrane ; Peripheral membrane protein; Cytoplasmic side. Golgi apparatus, trans-Golgi network membrane ; Peripheral membrane protein ; Cytoplasmic side . Early endosome membrane; Peripheral membrane protein; Cytoplasmic side. Cell projection, lamellipodium . Enriched on tubular elements of the early endosome membrane. Binds preferentially to highly curved membranes enriched in phosphatidylinositol 3-phosphate (PtdIns(3P)) or phosphatidylinositol 3,5-bisphosphate (PtdIns(3,5)P2) (PubMed:15498486). Colocalized with SORT1 to tubular endosomal membrane structures called endosome-to-TGN transport carriers (ETCs) which are budding from early endosome vacuoles just before maturing into late endosome vacuoles (PubMed:18088323). Colocalizes with DNAJC13 and Shiginella dysenteria toxin stx

Expression : Brain, Coronary artery, Liver, Muscle, Testis,

Products Images



Western Blot analysis of various cells using SNX1 Polyclonal Antibody



Immunohistochemical analysis of paraffin-embedded human Colon cancer. 1, Antibody was diluted at 1:200(4° overnight). 2, Tris-EDTA,pH9.0 was used for antigen retrieval. 3,Secondary antibody was diluted at 1:200(room temperature, 45min).