

## SNX4 Polyclonal Antibody

<b>Catalog No :</b>	YT4360
<b>Reactivity :</b>	Human;Mouse;Rat
<b>Applications :</b>	WB;IHC
<b>Target :</b>	SNX4
<b>Fields :</b>	>>Endocytosis
<b>Gene Name :</b>	SNX4
<b>Protein Name :</b>	Sorting nexin-4
<b>Human Gene Id :</b>	8723
<b>Human Swiss Prot No :</b>	O95219
<b>Mouse Gene Id :</b>	69150
<b>Mouse Swiss Prot No :</b>	Q91YJ2
<b>Immunogen :</b>	The antiserum was produced against synthesized peptide derived from human SNX4. AA range:191-240
<b>Specificity :</b>	SNX4 Polyclonal Antibody detects endogenous levels of SNX4 protein.
<b>Formulation :</b>	Liquid in PBS containing 50% glycerol, 0.5% BSA and 0.02% sodium azide.
<b>Source :</b>	Polyclonal, Rabbit,IgG
<b>Dilution :</b>	WB 1:500-2000;IHC 1:50-300
<b>Purification :</b>	The antibody was affinity-purified from rabbit antiserum by affinity-chromatography using epitope-specific immunogen.
<b>Concentration :</b>	1 mg/ml

**Storage Stability :** -15°C to -25°C/1 year(Do not lower than -25°C)

**Observed Band :** 60kD

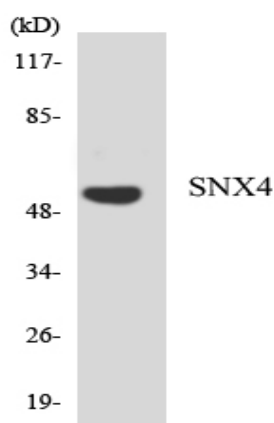
**Background :** This gene encodes a member of the sorting nexin family. Members of this family contain a phox (PX) domain, which is a phosphoinositide binding domain, and are involved in intracellular trafficking. This protein associated with the long isoform of the leptin receptor and with receptor tyrosine kinases for platelet-derived growth factor, insulin, and epidermal growth factor in cell cultures, but its function is unknown. This protein may form oligomeric complexes with family members. Two transcript variants, one protein coding and the other non-protein coding, have been found for this gene. [provided by RefSeq, Nov 2012],

**Function :** function:May be involved in several stages of intracellular trafficking.,similarity:Belongs to the sorting nexin family.,similarity:Contains 1 PX (phox homology) domain.,

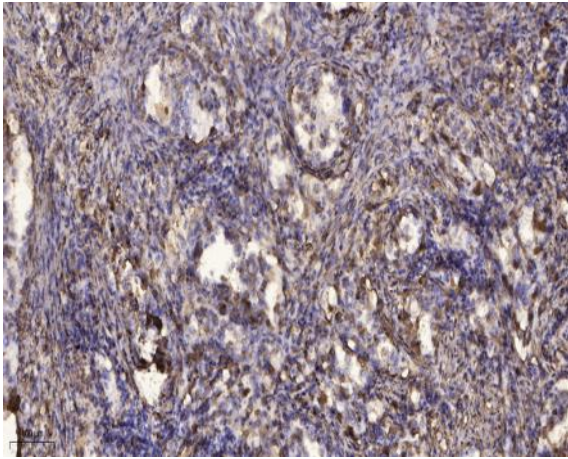
**Subcellular Location :** Early endosome membrane ; Peripheral membrane protein ; Cytoplasmic side . Also detected on a juxtannuclear endocytic recycling compartment (ERC). .

**Expression :** Liver, Skin,

## Products Images



Western blot analysis of the lysates from HeLa cells using SNX4 antibody.



Immunohistochemical analysis of paraffin-embedded human Squamous cell carcinoma of lung. 1, Antibody was diluted at 1:200(4° overnight). 2, Tris-EDTA,pH9.0 was used for antigen retrieval. 3,Secondary antibody was diluted at 1:200(room temperature, 45min).