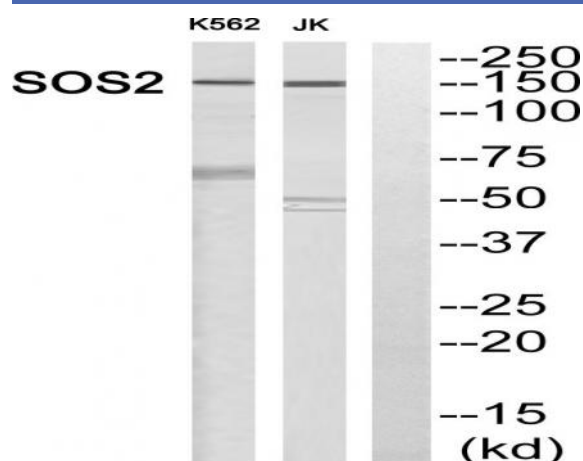


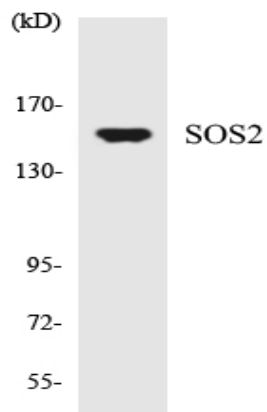
Sos 2 Polyclonal Antibody

Catalog No :	YT4367
Reactivity :	Human;Mouse
Applications :	WB;ELISA;IHC
Target :	Sos 2
Fields :	>>EGFR tyrosine kinase inhibitor resistance;>>Endocrine resistance;>>MAPK signaling pathway;>>ErbB signaling pathway;>>Ras signaling pathway;>>Chemokine signaling pathway;>>FoxO signaling pathway;>>Phospholipase D signaling pathway;>>mTOR signaling pathway;>>PI3K-Akt signaling pathway;>>Focal adhesion;>>Gap junction;>>JAK-STAT signaling pathway;>>Natural killer cell mediated cytotoxicity;>>T cell receptor signaling pathway;>>B cell receptor signaling pathway;>>Fc epsilon RI signaling pathway;>>Thermogenesis;>>Neurotrophin signaling pathway;>>Regulation of actin cytoskeleton;>>Insulin signaling pathway;>>GnRH signaling pathway;>>Estrogen signaling pathway;>>Prolactin signaling pathway;>>Relaxin signaling pathway;>>Growth hormone synthesis, secretion and action;>>Alcoholism;>>Hepatitis C;>>Hepatitis B;>>Human cytomegalovirus infection;>>Human papillomavirus infection;>>Pathways in cancer;>>Proteoglycans in cancer;>>MicroRNAs in cancer;>>Chemical carcinogenesis - receptor activation;>>Che
Gene Name :	SOS2
Protein Name :	Son of sevenless homolog 2
Human Gene Id :	6655
Human Swiss Prot No :	Q07890
Mouse Swiss Prot No :	Q02384
Immunogen :	The antiserum was produced against synthesized peptide derived from human SOS2. AA range:631-680
Specificity :	Sos 2 Polyclonal Antibody detects endogenous levels of Sos 2 protein.
Formulation :	Liquid in PBS containing 50% glycerol, 0.5% BSA and 0.02% sodium azide.

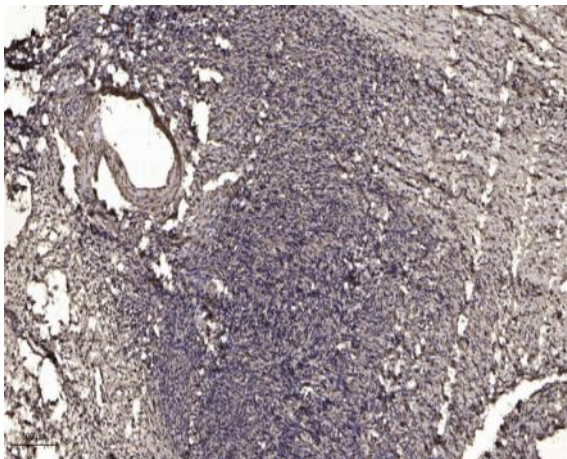
Source :	Polyclonal, Rabbit,IgG
Dilution :	WB 1:500-2000;IHC 1:50-300; ELISA 2000-20000
Purification :	The antibody was affinity-purified from rabbit antiserum by affinity-chromatography using epitope-specific immunogen.
Concentration :	1 mg/ml
Storage Stability :	-15°C to -25°C/1 year(Do not lower than -25°C)
Observed Band :	150kD
Cell Pathway :	MAPK_ERK_Growth;MAPK_G_Protein;ErbB_HER;Chemokine;Dorso-ventral axis formation;Focal adhesion;Gap junction;Jak_STAT;Natural killer cell mediated cytotoxicity;T_Cell_Receptor;B_Cell_Antigen;Fc epsilon
Background :	This gene encodes a regulatory protein that is involved in the positive regulation of ras proteins. Mutations in this gene are associated with Noonan Syndrome-9. [provided by RefSeq, Jul 2016],
Function :	function:Promotes the exchange of Ras-bound GDP by GTP.,online information:Son of sevenless entry,similarity:Contains 1 DH (DBL-homology) domain.,similarity:Contains 1 N-terminal Ras-GEF domain.,similarity:Contains 1 PH domain.,similarity:Contains 1 Ras-GEF domain.,
Subcellular Location :	intracellular,cytosol,
Expression :	Brain,Placenta,

Products Images





Western blot analysis of the lysates from HT-29 cells using SOS2 antibody.



Immunohistochemical analysis of paraffin-embedded human oophoroma. 1, Antibody was diluted at 1:200(4° overnight). 2, Tris-EDTA,pH9.0 was used for antigen retrieval. 3,Secondary antibody was diluted at 1:200(room temperature, 45min).