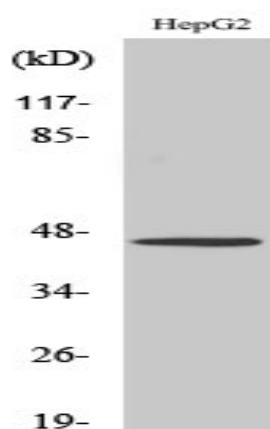


SR-1A Polyclonal Antibody

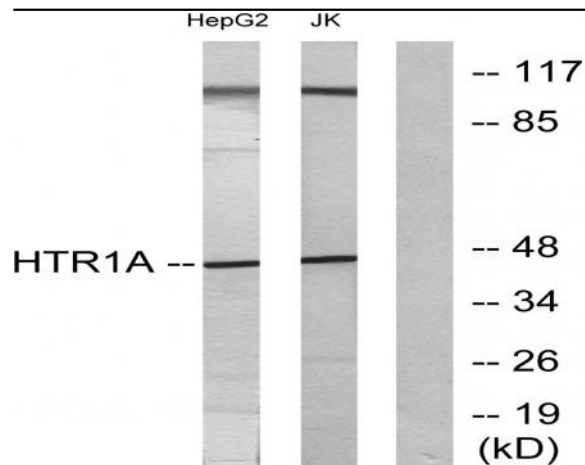
Catalog No :	YT4391
Reactivity :	Human;Mouse;Rat
Applications :	WB;IHC;IF;ELISA
Target :	SR-1A
Fields :	>>cAMP signaling pathway;>>Neuroactive ligand-receptor interaction;>>Serotonergic synapse;>>Taste transduction
Gene Name :	HTR1A
Protein Name :	5-hydroxytryptamine receptor 1A
Human Gene Id :	3350
Human Swiss Prot No :	P08908
Mouse Gene Id :	15550
Mouse Swiss Prot No :	Q64264
Rat Gene Id :	24473
Rat Swiss Prot No :	P19327
Immunogen :	The antiserum was produced against synthesized peptide derived from human 5-HT-1A. AA range:291-340
Specificity :	SR-1A Polyclonal Antibody detects endogenous levels of SR-1A protein.
Formulation :	Liquid in PBS containing 50% glycerol, 0.5% BSA and 0.02% sodium azide.
Source :	Polyclonal, Rabbit,IgG
Dilution :	WB 1:500 - 1:2000. IHC 1:100 - 1:300. IF 1:200 - 1:1000. ELISA: 1:20000. Not yet tested in other applications.

Purification :	The antibody was affinity-purified from rabbit antiserum by affinity-chromatography using epitope-specific immunogen.
Concentration :	1 mg/ml
Storage Stability :	-15°C to -25°C/1 year(Do not lower than -25°C)
Observed Band :	46kD
Cell Pathway :	Neuroactive ligand-receptor interaction;
Background :	This gene encodes a G protein-coupled receptor for 5-hydroxytryptamine (serotonin), and belongs to the 5-hydroxytryptamine receptor subfamily. Serotonin has been implicated in a number of physiologic processes and pathologic conditions. Inactivation of this gene in mice results in behavior consistent with an increased anxiety and stress response. Mutation in the promoter of this gene has been associated with menstrual cycle-dependent periodic fevers. [provided by RefSeq, Jun 2012],
Function :	function:This is one of the several different receptors for 5-hydroxytryptamine (serotonin), a biogenic hormone that functions as a neurotransmitter, a hormone, and a mitogen. The activity of this receptor is mediated by G proteins that inhibit adenylate cyclase activity.,similarity:Belongs to the G-protein coupled receptor 1 family.,
Subcellular Location :	Cell membrane ; Multi-pass membrane protein . Cell projection, dendrite .
Expression :	Detected in lymph nodes, thymus and spleen. Detected in activated T-cells, but not in resting T-cells.

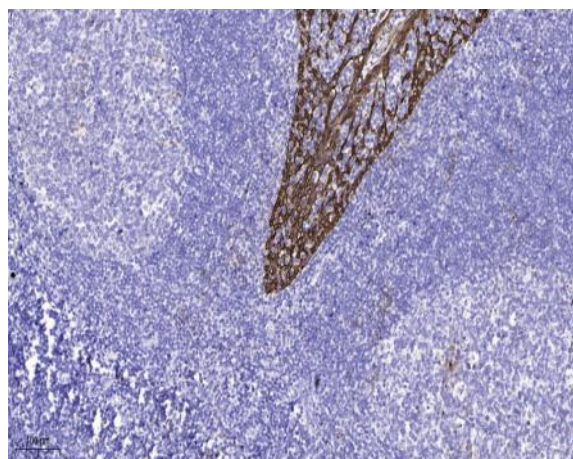
Products Images



Western Blot analysis of various cells using SR-1A Polyclonal Antibody diluted at 1:500



Western blot analysis of lysates from HepG2 and Jurkat cells, using 5-HT-1A Antibody. The lane on the right is blocked with the synthesized peptide.



Immunohistochemical analysis of paraffin-embedded human tonsil. 1, Antibody was diluted at 1:200(4° overnight). 2, Tris-EDTA,pH9.0 was used for antigen retrieval. 3,Secondary antibody was diluted at 1:200(room temperature, 45min).