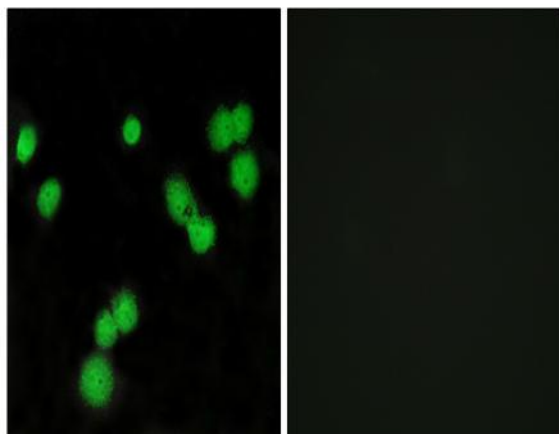


## SRp40 Polyclonal Antibody

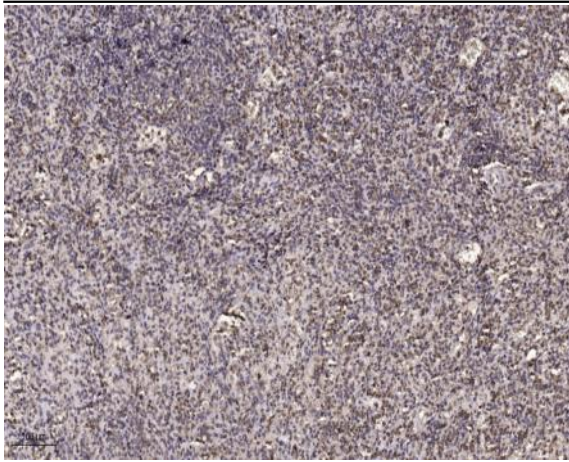
<b>Catalog No :</b>	YT4418
<b>Reactivity :</b>	Human;Mouse;Rat
<b>Applications :</b>	IHC;IF;ELISA
<b>Target :</b>	SRp40
<b>Fields :</b>	>>Spliceosome;>>Herpes simplex virus 1 infection
<b>Gene Name :</b>	SRSF5
<b>Protein Name :</b>	Serine/arginine-rich splicing factor 5
<b>Human Gene Id :</b>	6430
<b>Human Swiss Prot No :</b>	Q13243
<b>Mouse Gene Id :</b>	20384
<b>Mouse Swiss Prot No :</b>	O35326
<b>Rat Gene Id :</b>	29667
<b>Rat Swiss Prot No :</b>	Q09167
<b>Immunogen :</b>	The antiserum was produced against synthesized peptide derived from human SFRS5. AA range:71-120
<b>Specificity :</b>	SRp40 Polyclonal Antibody detects endogenous levels of SRp40 protein.
<b>Formulation :</b>	Liquid in PBS containing 50% glycerol, 0.5% BSA and 0.02% sodium azide.
<b>Source :</b>	Polyclonal, Rabbit,IgG
<b>Dilution :</b>	IHC 1:100 - 1:300. IF 1:200 - 1:1000. ELISA: 1:20000. Not yet tested in other applications.

<b>Purification :</b>	The antibody was affinity-purified from rabbit antiserum by affinity-chromatography using epitope-specific immunogen.
<b>Concentration :</b>	1 mg/ml
<b>Storage Stability :</b>	-15°C to -25°C/1 year(Do not lower than -25°C)
<b>Molecularweight :</b>	31kD
<b>Cell Pathway :</b>	Spliceosome;
<b>Background :</b>	The protein encoded by this gene is a member of the serine/arginine (SR)-rich family of pre-mRNA splicing factors, which constitute part of the spliceosome. Each of these factors contains an RNA recognition motif (RRM) for binding RNA and an RS domain for binding other proteins. The RS domain is rich in serine and arginine residues and facilitates interaction between different SR splicing factors. In addition to being critical for mRNA splicing, the SR proteins have also been shown to be involved in mRNA export from the nucleus and in translation. Alternative splicing results in multiple transcript variants. [provided by RefSeq, Feb 2016],
<b>Function :</b>	function:Plays a role in constitutive splicing and can modulate the selection of alternative splice sites.,PTM:Extensively phosphorylated on serine residues in the RS domain.,similarity:Belongs to the splicing factor SR family.,similarity:Contains 2 RRM (RNA recognition motif) domains.,subunit:Found in a pre-mRNA splicing complex with SFRS4, SFRS5, SNRNP70, SNRPA1, SRRM1 and SRRM2.,
<b>Subcellular Location :</b>	Nucleus.
<b>Expression :</b>	Brain,Colon,Epithelium,Fetal brain,Human endometrium carcin

## Products Images



Immunofluorescence analysis of MCF7 cells, using SFRS5 Antibody. The picture on the right is blocked with the synthesized peptide.



Immunohistochemical analysis of paraffin-embedded human spleen. 1, Tris-EDTA, pH 9.0 was used for antigen retrieval. 2 Antibody was diluted at 1:200 (4° overnight). 3, Secondary antibody was diluted at 1:200 (room temperature, 45 min).