

## SRp75 Polyclonal Antibody

<b>Catalog No :</b>	YT4421
<b>Reactivity :</b>	Human;Mouse
<b>Applications :</b>	WB;IHC;IF;ELISA
<b>Target :</b>	SRp75
<b>Fields :</b>	>>Spliceosome;>>Herpes simplex virus 1 infection
<b>Gene Name :</b>	SRSF4
<b>Protein Name :</b>	Serine/arginine-rich splicing factor 4
<b>Human Gene Id :</b>	6429
<b>Human Swiss Prot No :</b>	Q08170
<b>Mouse Swiss Prot No :</b>	Q8VE97
<b>Immunogen :</b>	The antiserum was produced against synthesized peptide derived from human SFRS4. AA range:111-160
<b>Specificity :</b>	SRp75 Polyclonal Antibody detects endogenous levels of SRp75 protein.
<b>Formulation :</b>	Liquid in PBS containing 50% glycerol, 0.5% BSA and 0.02% sodium azide.
<b>Source :</b>	Polyclonal, Rabbit,IgG
<b>Dilution :</b>	WB 1:500 - 1:2000. IHC 1:100 - 1:300. ELISA: 1:20000.. IF 1:50-200
<b>Purification :</b>	The antibody was affinity-purified from rabbit antiserum by affinity-chromatography using epitope-specific immunogen.
<b>Concentration :</b>	1 mg/ml
<b>Storage Stability :</b>	-15°C to -25°C/1 year(Do not lower than -25°C)

**Observed Band :** 57kD

**Cell Pathway :** Spliceosome;

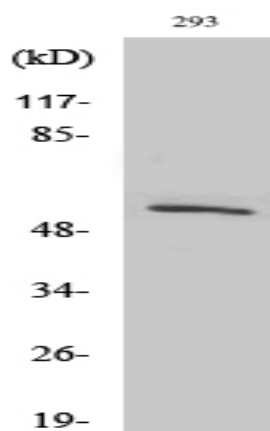
**Background :** This gene encodes a member of the arginine/serine-rich splicing factor family. The encoded protein likely functions in mRNA processing. [provided by RefSeq, Feb 2009],

**Function :** function:A probable role in alternative splice site selection during pre-mRNA splicing.,PTM:Extensively phosphorylated on serine residues in the RS domain.,similarity:Belongs to the splicing factor SR family.,similarity:Contains 2 RRM (RNA recognition motif) domains.,subunit:Found in a pre-mRNA splicing complex with SFRS4, SFRS5, SNRNP70, SNRPA1, SRRM1 and SRRM2. Interacts with PNN.,

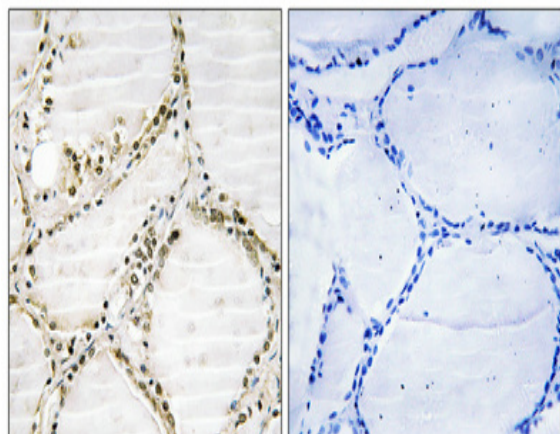
**Subcellular Location :** Nucleus speckle .

**Expression :** Aorta endothelial cell,Cerebrum,Epithelium,Lymph,

## Products Images



Western Blot analysis of various cells using SRp75 Polyclonal Antibody diluted at 1:1000 cells nucleus extracted by Minute TM Cytoplasmic and Nuclear Fractionation kit (SC-003, Inventibiotech, MN, USA).



Immunohistochemical analysis of paraffin-embedded Human thyroid gland. Antibody was diluted at 1:100(4° overnight). High-pressure and temperature Tris-EDTA, pH8.0 was used for antigen retrieval. Negative control (right) obtained from antibody was pre-absorbed by immunogen peptide.

