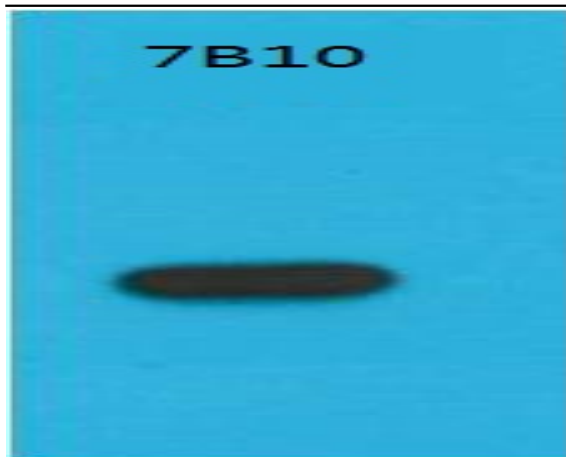


S1-Tag Monoclonal Antibody(7B10)

Catalog No :	YM3474
Reactivity :	Species independent
Applications :	WB
Target :	S1-Tag
Immunogen :	Purified recombinant S1-TAG protein expressed in E.coli.
Specificity :	S1-TAG Monoclonal Antibody detects S1-TAG fusion protein.
Formulation :	Liquid in PBS containing 50% glycerol, 0.5% BSA and 0.02% sodium azide.
Source :	Monoclonal, Mouse
Dilution :	WB 1:500 - 1:2000, Not yet tested in other applications,
Concentration :	1 mg/ml
Storage Stability :	-15°C to -25°C/1 year(Do not lower than -25°C)
Background :	S1 tag, with sequence NANNPDWDF, is derived from the hepatitis B virus preS1 region. S1 tag is widely used in various protein expression systems. This antibody can detect the over-expressed fusion proteins containing S1 epitope tag.

Products Images



Western blot analysis of Recombinant S1-Tag Protein with S1-Tag Mouse mAb diluted at 1:5,000.