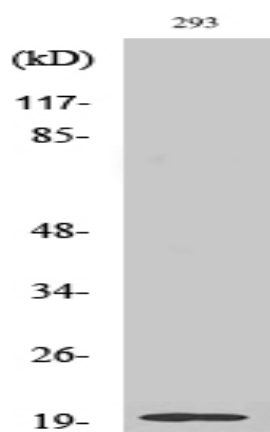


Stathmin-3 Polyclonal Antibody

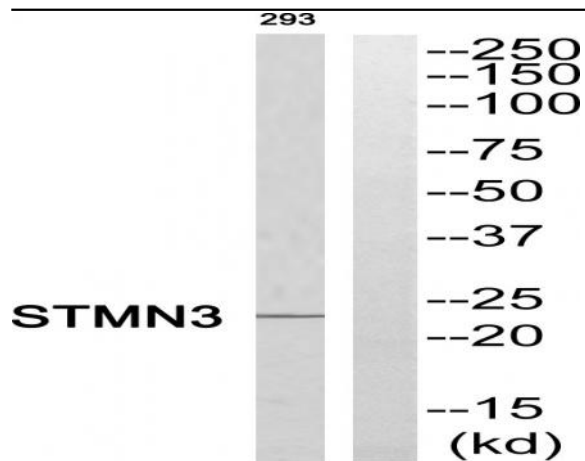
Catalog No :	YT4456
Reactivity :	Human;Mouse;Rat
Applications :	WB;ELISA;IHC
Target :	Stathmin-3
Gene Name :	STMN3
Protein Name :	Stathmin-3
Human Gene Id :	50861
Human Swiss Prot No :	Q9NZ72
Mouse Gene Id :	20262
Mouse Swiss Prot No :	O70166
Rat Gene Id :	29246
Rat Swiss Prot No :	Q9JHU6
Immunogen :	The antiserum was produced against synthesized peptide derived from human STMN3. AA range:61-110
Specificity :	Stathmin-3 Polyclonal Antibody detects endogenous levels of Stathmin-3 protein.
Formulation :	Liquid in PBS containing 50% glycerol, 0.5% BSA and 0.02% sodium azide.
Source :	Polyclonal, Rabbit,IgG
Dilution :	WB 1:500-2000;IHC 1:50-300; ELISA 2000-20000
Purification :	The antibody was affinity-purified from rabbit antiserum by affinity-chromatography using epitope-specific immunogen.

Concentration :	<u>1 mg/ml</u>
Storage Stability :	<u>-15°C to -25°C/1 year(Do not lower than -25°C)</u>
Observed Band :	<u>22kD</u>
Cell Pathway :	<u>Regulation of Microtubule Dynamics</u>
Background :	<u>This gene encodes a protein which is a member of the stathmin protein family. Members of this protein family form a complex with tubulins at a ratio of 2 tubulins for each stathmin protein. Microtubules require the ordered assembly of alpha- and beta-tubulins, and formation of a complex with stathmin disrupts microtubule formation and function. A pseudogene of this gene is located on chromosome 22. Alternative splicing results in multiple transcript variants. [provided by RefSeq, Jan 2013],</u>
Function :	<u>similarity:Belongs to the stathmin family.,tissue specificity:Neuron specific.,</u>
Subcellular Location :	<u>Golgi apparatus . Cell projection, growth cone . Cell projection, axon . Cytoplasm, cytosol .</u>
Expression :	<u>Neuron specific.</u>

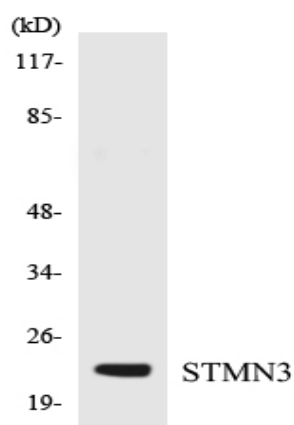
Products Images



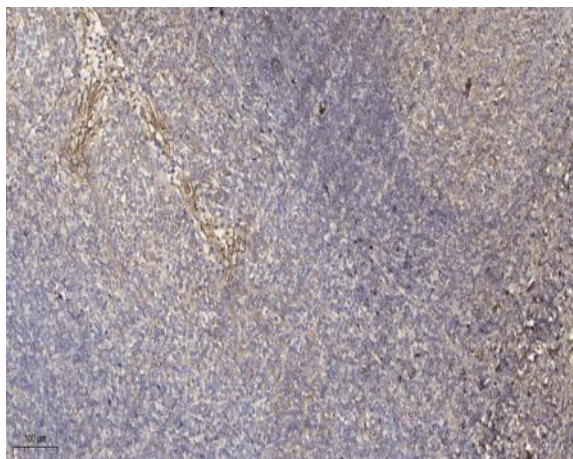
Western Blot analysis of various cells using Stathmin-3 Polyclonal Antibody



Western blot analysis of STMN3 Antibody. The lane on the right is blocked with the STMN3 peptide.



Western blot analysis of the lysates from K562 cells using STMN3 antibody.



Immunohistochemical analysis of paraffin-embedded human tonsil. 1, Antibody was diluted at 1:200(4° overnight). 2, Tris-EDTA,pH9.0 was used for antigen retrieval. 3,Secondary antibody was diluted at 1:200(room temperature, 45min).