

Tom20 Polyclonal Antibody

Catalog No :	YT4696
Reactivity :	Human;Mouse;Rat
Applications :	WB IF;ELISA
Target :	Tom20
Gene Name :	TOMM20
Protein Name :	Mitochondrial import receptor subunit TOM20 homolog
Human Gene Id :	9804
Human Swiss Prot No :	Q15388
Mouse Gene Id :	67952
Mouse Swiss Prot No :	Q9DCC8
Rat Gene Id :	266601
Rat Swiss Prot No :	Q62760
Immunogen :	The antiserum was produced against synthesized peptide derived from human TOMM20. AA range:15-64
Specificity :	Tom20 Polyclonal Antibody detects endogenous levels of Tom20 protein.
Formulation :	Liquid in PBS containing 50% glycerol, 0.5% BSA and 0.02% sodium azide.
Source :	Polyclonal, Rabbit,IgG
Dilution :	WB 1:500-2000 IF 1:100-300 ELISA 1:5000-20000 Not yet tested in other applications.
Purification :	The antibody was affinity-purified from rabbit antiserum by affinity-chromatography using epitope-specific immunogen.

Concentration : 1 mg/ml

Storage Stability : -15°C to -25°C/1 year(Do not lower than -25°C)

Observed Band : 17kD

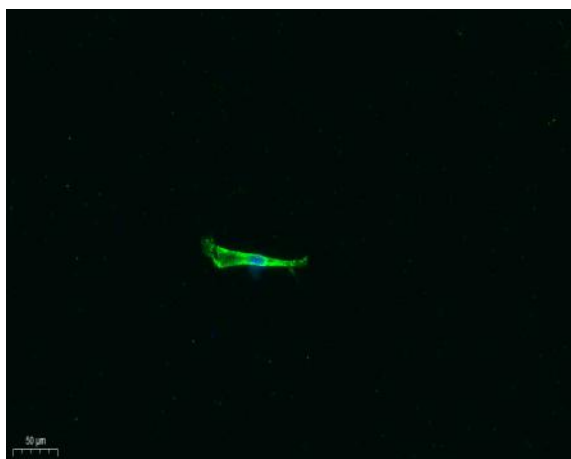
Background : function:Central component of the receptor complex responsible for the recognition and translocation of cytosolically synthesized mitochondrial preproteins. Together with tom22 functions as the transit peptide receptor at the surface of the mitochondrion outer membrane and facilitates the movement of preproteins into the tom40 translocation pore.,similarity:Belongs to the Tom20 family.,subunit:Forms part of the preprotein translocase complex of the outer mitochondrial membrane (TOM complex) which consists of at least 7 different proteins (TOMM5, TOMM6, TOMM7, TOMM20, TOMM22, TOMM40 and TOMM70). Interacts with TOM22.,

Function : function:Central component of the receptor complex responsible for the recognition and translocation of cytosolically synthesized mitochondrial preproteins. Together with tom22 functions as the transit peptide receptor at the surface of the mitochondrion outer membrane and facilitates the movement of preproteins into the tom40 translocation pore.,similarity:Belongs to the Tom20 family.,subunit:Forms part of the preprotein translocase complex of the outer mitochondrial membrane (TOM complex) which consists of at least 7 different proteins (TOMM5, TOMM6, TOMM7, TOMM20, TOMM22, TOMM40 and TOMM70). Interacts with TOM22.,

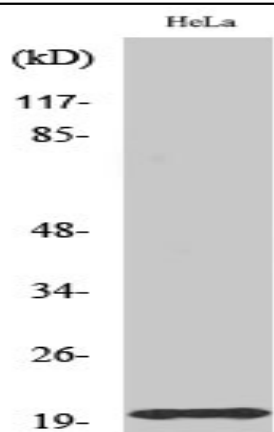
Subcellular Location : Mitochondrion outer membrane ; Single-pass membrane protein .

Expression : Bone marrow,Brain,Cervix,Epithelium,Eye,Fibroblast,Pancreas

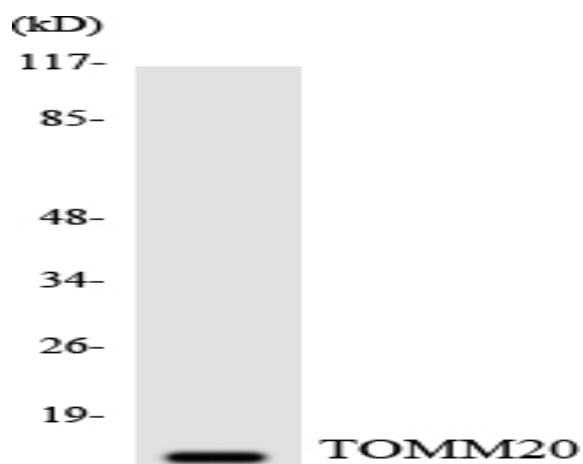
Products Images



Immunofluorescence analysis of A549. 1,primary Antibody was diluted at 1:200(4°C overnight). 2, Goat Anti Rabbit IgG (H&L) - Alexa Fluor 488 Secondary antibody was diluted at 1:1000(room temperature, 50min).3, Picture B: DAPI(blue) 10min.



Western Blot analysis of various cells using Tom20 Polyclonal Antibody diluted at 1:500. Secondary antibody(catalog#:RS0002) was diluted at 1:20000



Western blot analysis of the lysates from HeLa cells using TOMM20 antibody.