

## Synaptotagmin X Polyclonal Antibody

<b>Catalog No :</b>	YT4486
<b>Reactivity :</b>	Human;Mouse;Rat
<b>Applications :</b>	WB;IHC
<b>Target :</b>	Synaptotagmin X
<b>Gene Name :</b>	SYT10
<b>Protein Name :</b>	Synaptotagmin-10
<b>Human Gene Id :</b>	341359
<b>Human Swiss Prot No :</b>	Q6XYQ8
<b>Mouse Gene Id :</b>	54526
<b>Mouse Swiss Prot No :</b>	Q9R0N4
<b>Rat Gene Id :</b>	60567
<b>Rat Swiss Prot No :</b>	O08625
<b>Immunogen :</b>	Synthesized peptide derived from Synaptotagmin X . at AA range: 380-460
<b>Specificity :</b>	Synaptotagmin X Polyclonal Antibody detects endogenous levels of Synaptotagmin X protein.
<b>Formulation :</b>	Liquid in PBS containing 50% glycerol, 0.5% BSA and 0.02% sodium azide.
<b>Source :</b>	Polyclonal, Rabbit,IgG
<b>Dilution :</b>	WB 1:500-2000;IHC 1:50-300
<b>Purification :</b>	The antibody was affinity-purified from rabbit antiserum by affinity-chromatography using epitope-specific immunogen.

**Concentration :** 1 mg/ml

**Storage Stability :** -15°C to -25°C/1 year(Do not lower than -25°C)

**Observed Band :** 55kD

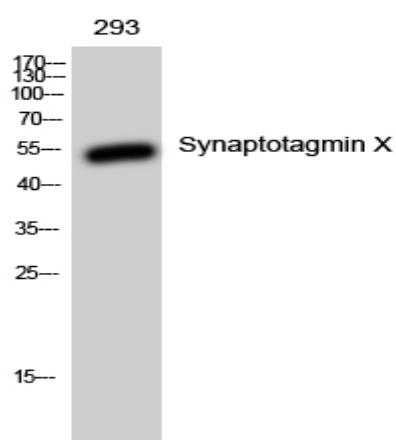
**Background :** cofactor: Binds 3 calcium ions per subunit. The ions are bound to the C2 domains., function: May be involved in Ca(2+)-dependent exocytosis of secretory vesicles through Ca(2+) and phospholipid binding to the C2 domain or may serve as Ca(2+) sensors in the process of vesicular trafficking and exocytosis., similarity: Belongs to the synaptotagmin family., similarity: Contains 2 C2 domains., subunit: Homodimer. Can also form heterodimers., tissue specificity: Expressed only in pancreas, lung and kidney.,

**Function :** cofactor: Binds 3 calcium ions per subunit. The ions are bound to the C2 domains., function: May be involved in Ca(2+)-dependent exocytosis of secretory vesicles through Ca(2+) and phospholipid binding to the C2 domain or may serve as Ca(2+) sensors in the process of vesicular trafficking and exocytosis., similarity: Belongs to the synaptotagmin family., similarity: Contains 2 C2 domains., subunit: Homodimer. Can also form heterodimers., tissue specificity: Expressed only in pancreas, lung and kidney.,

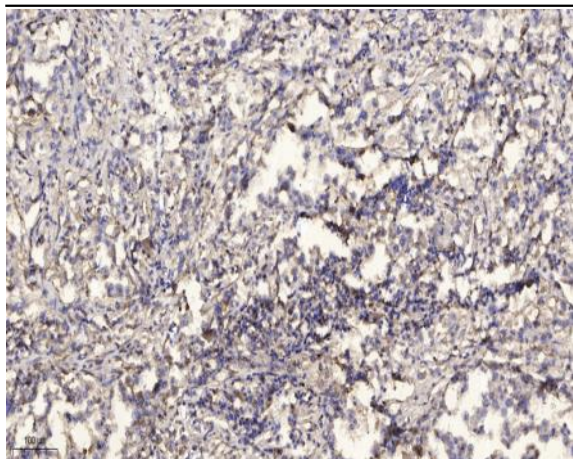
**Subcellular Location :** Cytoplasmic vesicle, secretory vesicle membrane ; Single-pass membrane protein . Localizes to neuronal vesicles containing IGF1 that are not enriched at synapses. Does not colocalize with synaptic vesicles or with the Golgi apparatus. .

**Expression :** Expressed only in pancreas, lung and kidney.

## Products Images



Western Blot analysis of 293 cells using Synaptotagmin X Polyclonal Antibody



Immunohistochemical analysis of paraffin-embedded human Squamous cell carcinoma of lung. 1, Antibody was diluted at 1:200(4° overnight). 2, Tris-EDTA,pH9.0 was used for antigen retrieval. 3,Secondary antibody was diluted at 1:200(room temperature, 45min).